

GRAND
LEGACY OF
65
YEARS

 **JOHNSON**TILES[®]
NOT JUST TILES, LIFESTYLES.[®]

VERVE
ELITE PLUS
COLLECTION
60X120 CM

SENTINI - Dec. 2023



VERVE ELITE PLUS COLLECTION

60X120 cm Porcelain Tiles

Presenting Johnson Verve, an eclectic collection of 60 x 120 cm porcelain tiles that displays exuberance of beautiful designs, colours and textures. Ranging from minimalist to over-the-top, these stylish, beautifully embellished tiles cater to all tastes and design aesthetics. Verve collection is sure to add distinct personality and flair to your interior spaces, be it a home or office. Explore Johnson Verve collection and watch your spaces come to life!



RECEPTION



DLN DEX

60X120

HIGH GLOSSY	06
POLISHED	10
MATT	26
TECHNICAL & PACKING DETAILS	38
BRANCH & EC DETAILS	39

BLING NERO

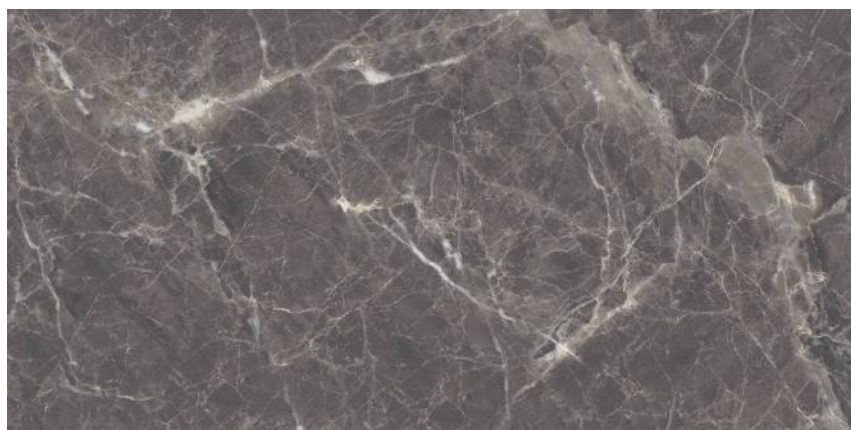


RANDOM PHASES

GLOBUS CHARCOAL



JOURNEZ NERO



RANDOM PHASES



KLEOZ BLUE



RANDOM PHASES

KLEOZ TROPIC



MANSAN BROWN



RANDOM PHASES

MANSAN NERO



RANDOM PHASES



ALTER GREY



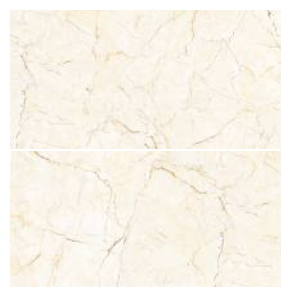
RANDOM PHASES

BOWNSWIK BEIGE



RANDOM PHASES

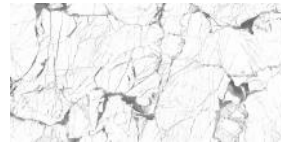
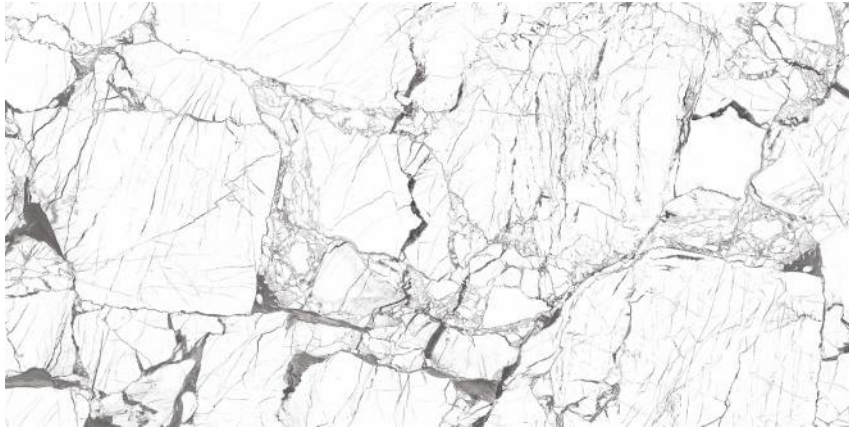
CREASE BEIGE



RANDOM PHASES



CREST WHITE



RANDOM PHASES

DIANAZ BEIGE



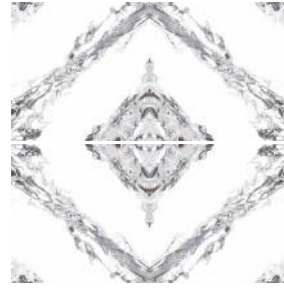
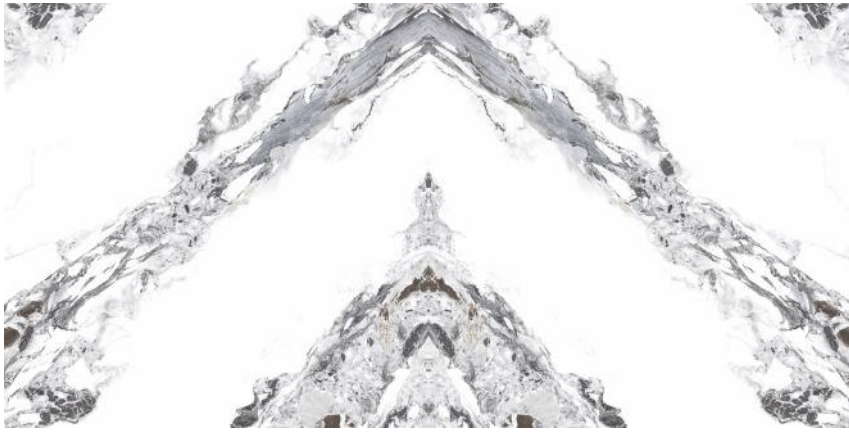
RANDOM PHASES

DOON CARAMEL



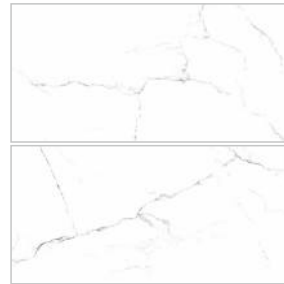
RANDOM PHASES

ECHO WHITE



BOOKMATCH

ELEGANTE WHITE



RANDOM PHASES

FEELZ GOLD



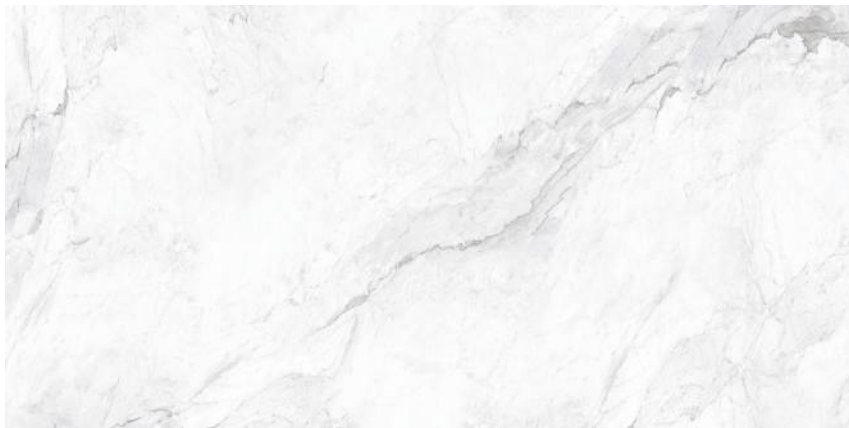
RANDOM PHASES

FEELZ WHITE



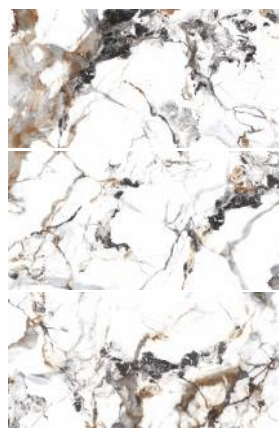
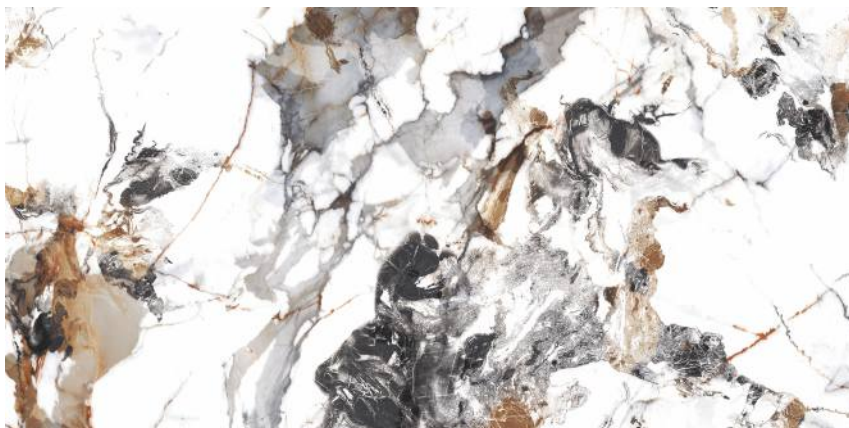
RANDOM PHASES

FLOWZ WHITE



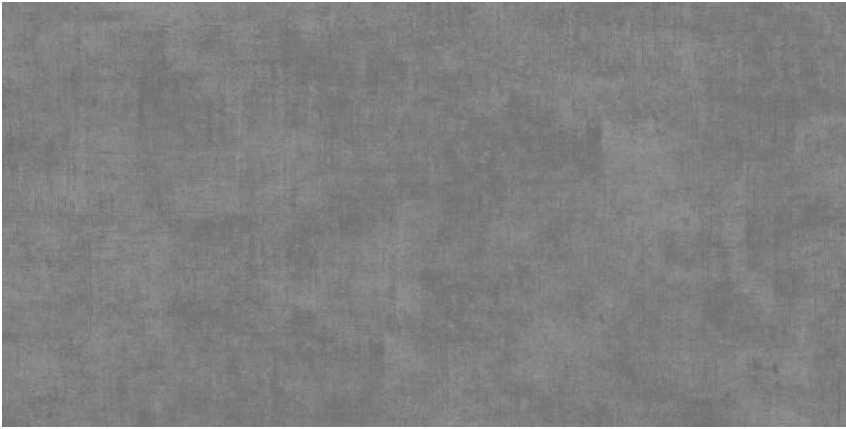
RANDOM PHASES

GAZE MIX

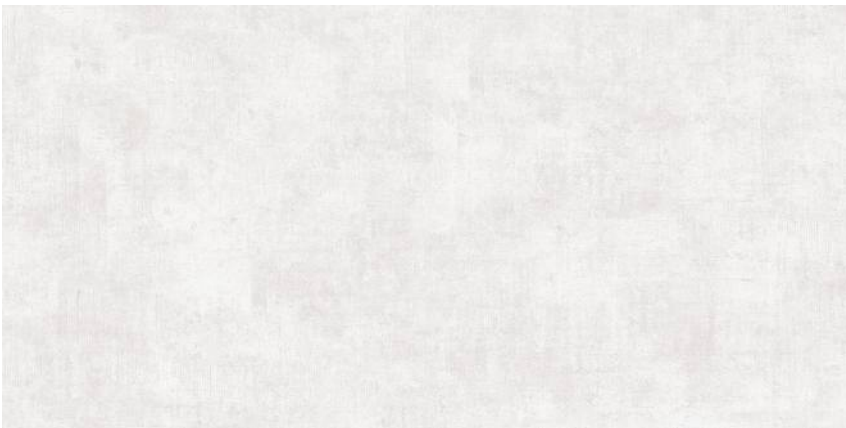


RANDOM PHASES

GLOBUS GRIS



GLOBUS SNOW



HENZIL GRIS



RANDOM PHASES

KLEOZ BEIGE



RANDOM PHASES

KLEOZ FOREST



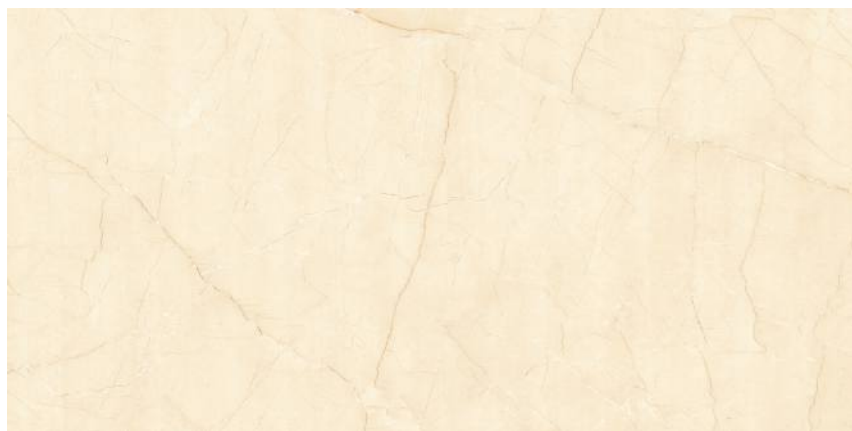
KLEOZ GOLD



RANDOM PHASES



JASMINE CREMA

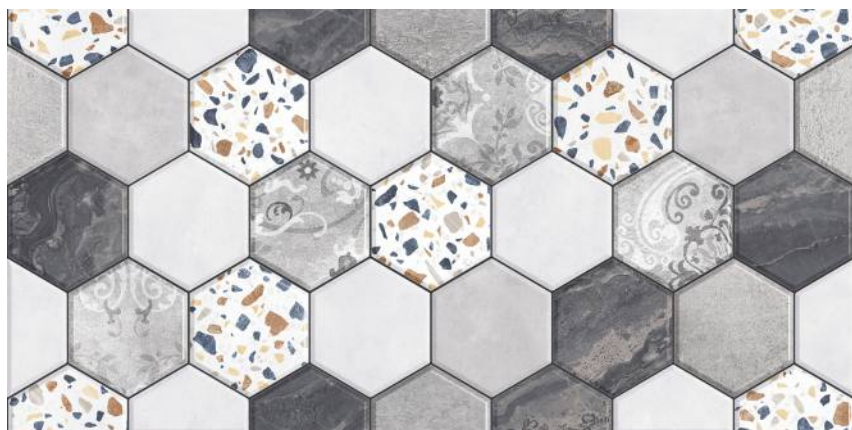


RANDOM PHASES

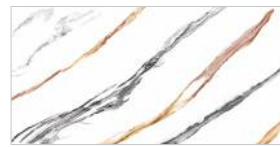
KLEOZ FLORA



KLEOZ HEXA

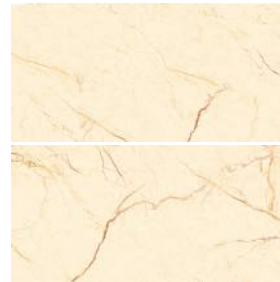
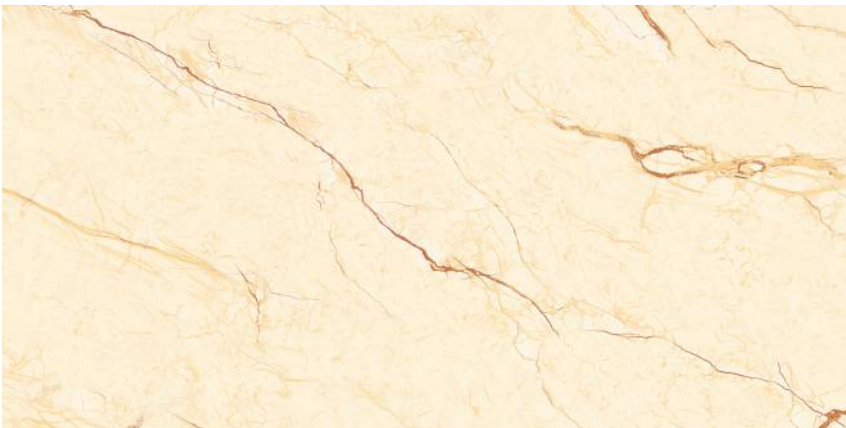


LINER MARBLE



RANDOM PHASES

LOTUS BEIGE



RANDOM PHASES

MANSAN BEIGE



RANDOM PHASES

ELITE PLUS

60X120 CM

POLISHED

MANSAN CREMA



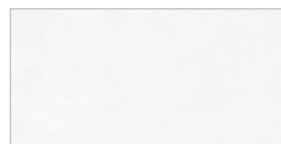
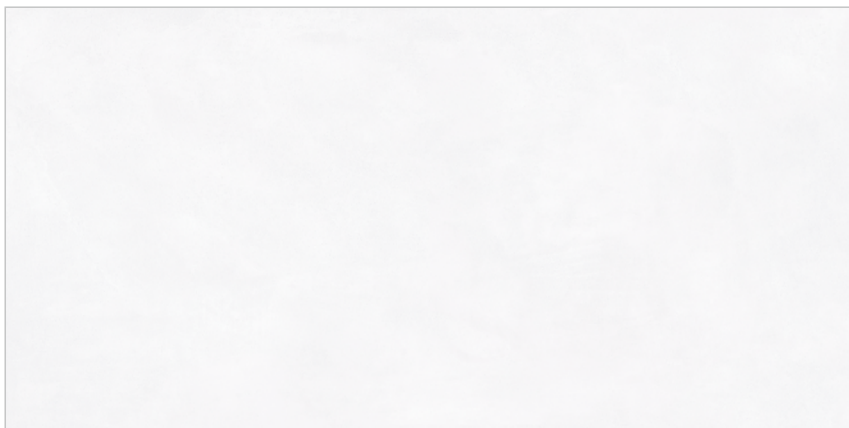
RANDOM PHASES

MANSAN GRIS



RANDOM PHASES

MANSAN WHITE



RANDOM PHASES

MUSSO BEIGE



RANDOM PHASES

OREAL GRIS



RANDOM PHASES

PRINTIL WHITE



SANDEO GRIS



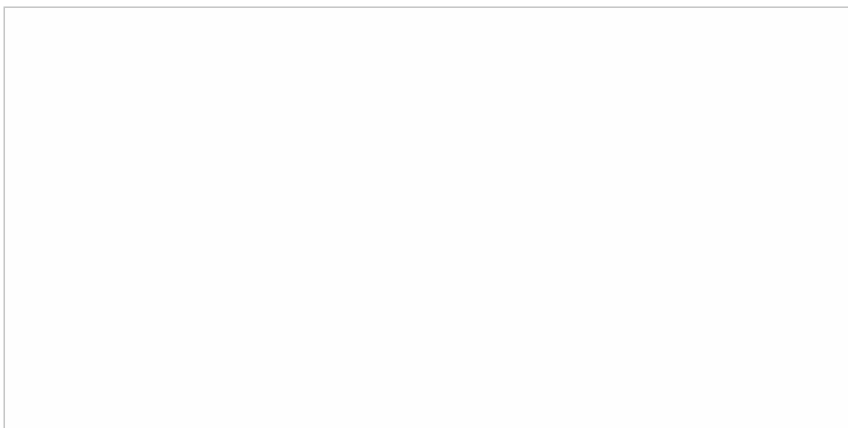
RANDOM PHASES

SMOKE ONYX



RANDOM PHASES

SONER WHITE





ELITE PLUS

60X120 CM

POLISHED

VENITA WHITE



RANDOM PHASES

SUNDANE GREEN LT



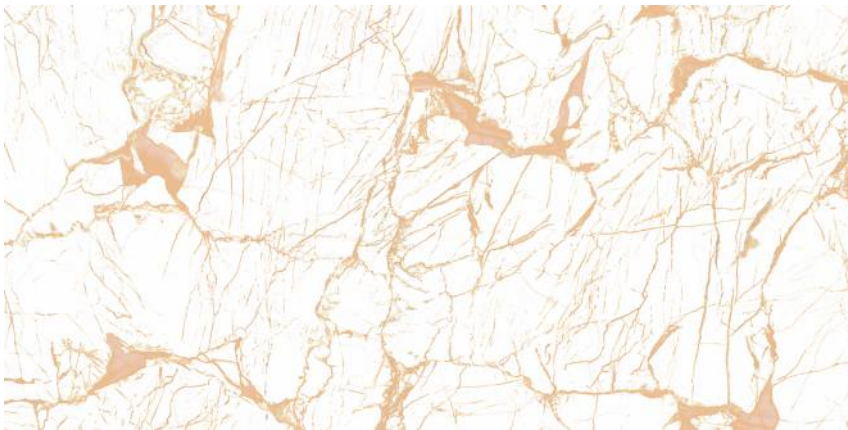
SUNDANE TROPIC



SUNDANE GREEN DK



WEBNER CARAMEL

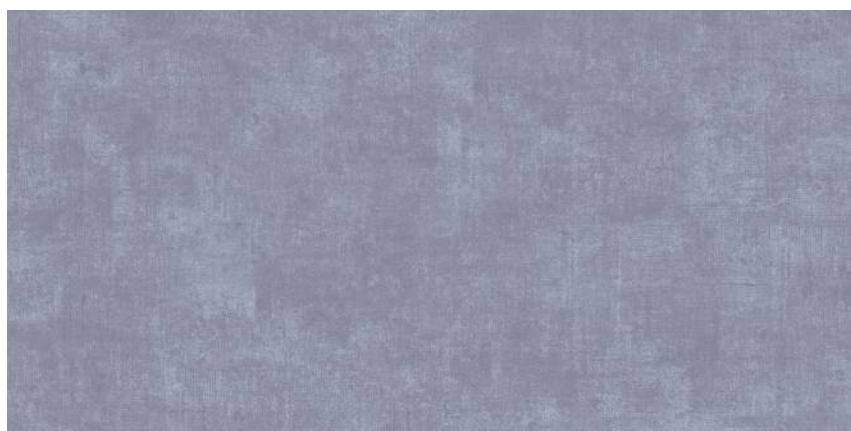


RANDOM PHASES

CRUSHWOOD NATURA



GLOBUS AZUL



GLOBUS GREEN





ELITE PLUS

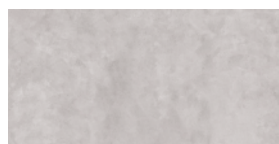
60X120 CM

MATT

GLOBUS NERO



KLEOZ ASH

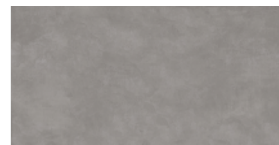


RANDOM PHASES

LINEA WOOD GREY

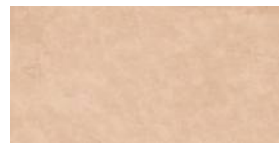


MANSAN ASH



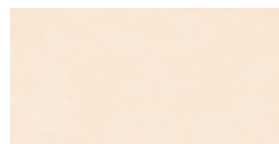
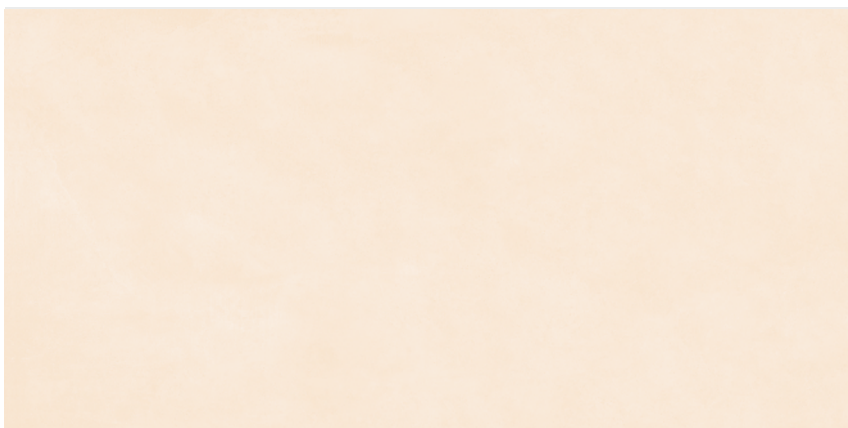
RANDOM PHASES

MANSAN GOLD



RANDOM PHASES

MANSAN IVORY



RANDOM PHASES

MAPPLEWOOD ASH



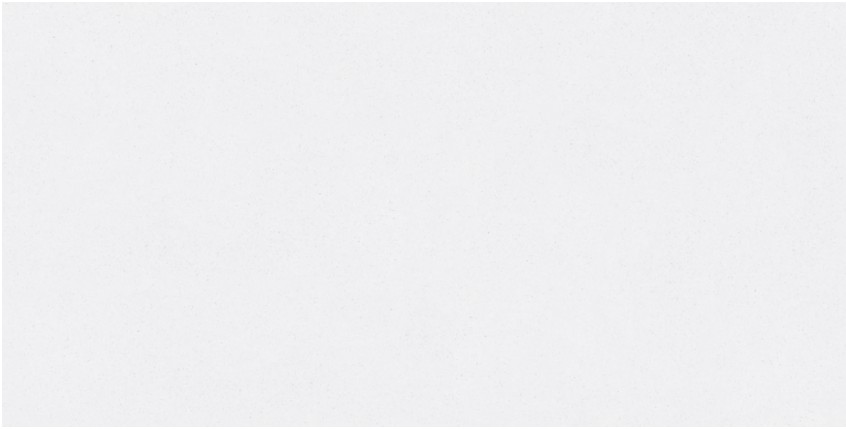
POKER ASH



POKER BEIGE



POKER BIANCO



POKER BRUNO



PRINTIL NERO

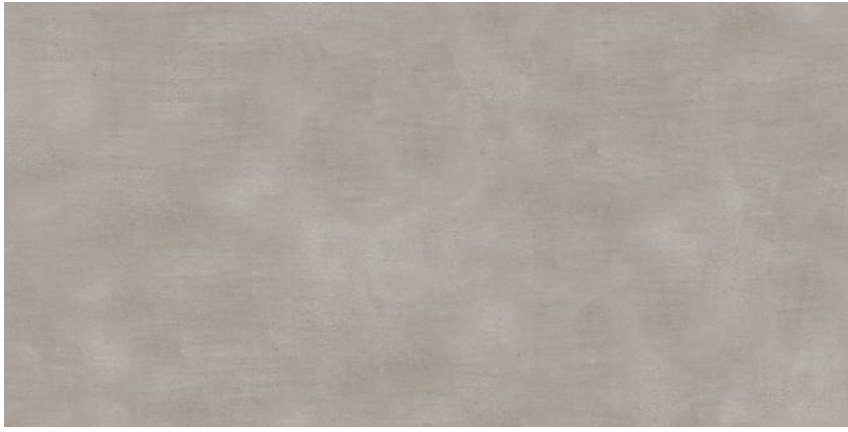


ELITE PLUS

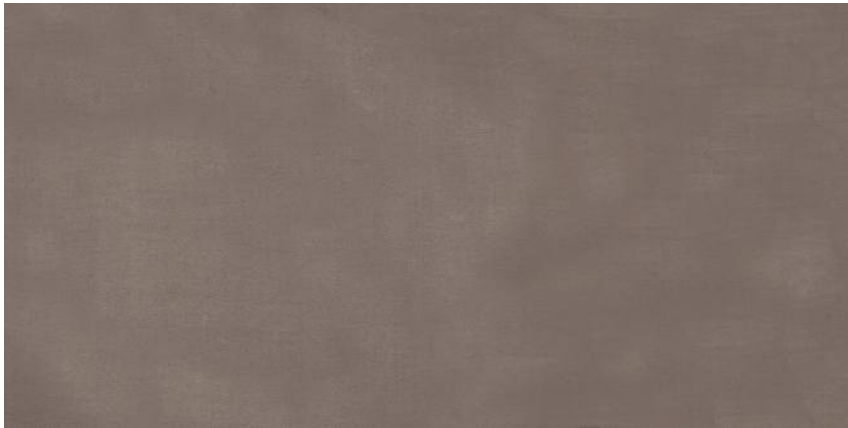
60X120 CM

MATT

RHEAZ GRIS



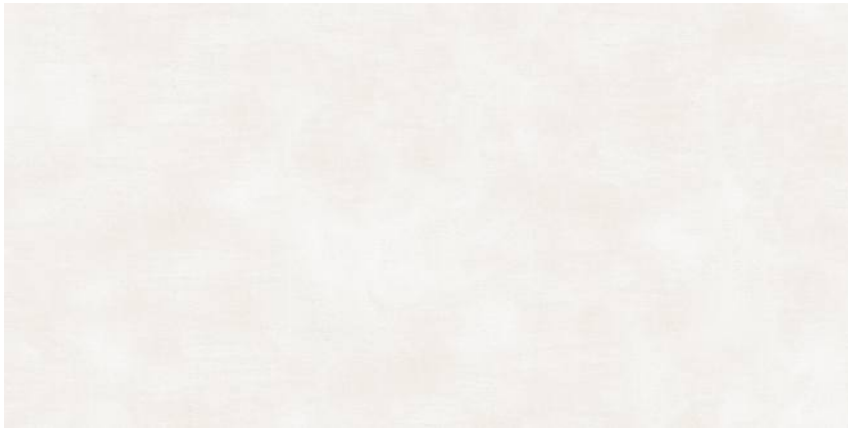
RHEAZ OCHRE



RHEAZ SILVER



RHEAZ WHITE



TEAKWOOD KNOT



RANDOM PHASES

VINTAGEWOOD GRIS

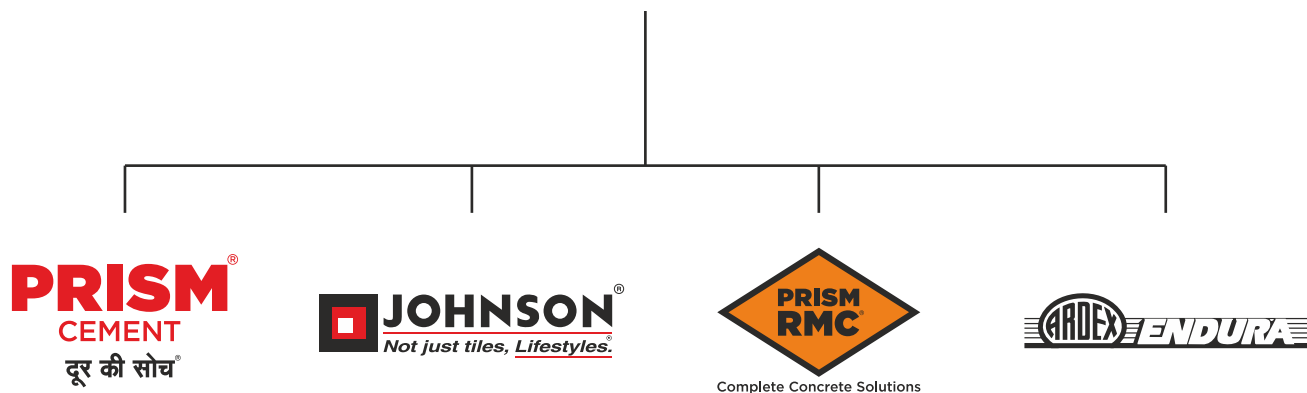


RANDOM PHASES

A journey from tiles to lifestyles - measured in square feet

H&R Johnson (India) is a division of Prism Johnson Limited, one of India's foremost Integrated Building Materials conglomerates.

PRISM JOHNSON LIMITED



Established in 1958, Johnson is one of the oldest and trusted brands in the country. Built on the strong and unswerving foundations of quality and innovation, this trust has only grown in these decades gone by; and continues to grow. Starting with tiles, the brand soon diversified into offering lifestyle solutions in the realms of Engineered Marble & Quartz and Bath Solutions. There by becoming India's most Integrated Lifestyle Solutions brand. Every product that comes bearing the H&R Johnson insignia is a symbol of the same quality and innovation focused on adding value to the lives of our consumers.

Pioneering Innovations, A Way of Life

At H&R Johnson the term innovation is at the heart of everything we do. That's why it is backed by credible research. Every product attempts to fill in a void left by conventional offerings in the category, in an innovative manner. It's this value we place on cutting-edge innovation that makes us strive for more and eventually deliver more. A quality and a way of working that has redefine consumer lifestyles and expectations.

- Anti-skid & Water-repellent Tiles for Bathrooms
- Rectified Wall Tiles
- Johnson Marbonite - Vitrified Wall and Floor Tiles
- Joint Free Tiles
- Large Format Slabs
- Digitally Printed Wall & Floor Tiles
- Germ Free Tiles & Sanitaryware
- Exterior & Industrial Flooring Solutions

India's Most Integrated Tile Manufacturing Company



Self-owned Felspar Mines



Making Punches & Dies



Manufacturing of Soluble Salts and Inks

Being India's most trusted tiling brand requires that trust to be maintained in every stage of developing each and every product that bears the name of the brand. That's why at H&R Johnson, our Felspar Mines are Self-owned, the soluble salts and inks are manufactured in-house, and even the dies and punches are made in-house. All, so that every step in the process comes with the same quality and assurance, that you expect from us.



Manufacturing Excellence

Johnson has the most modern manufacturing units across strategic locations in India. Our manufacturing facilities employ the best technology from world leaders in tile manufacturing equipment. All our plants are ISO compliant with both 9001 and 14001 certifications as well as OHSAS 18001 certification.



Certifications



Johnson is India's largest tile manufacturer. Its commitment to quality, service and innovation is backed by certification from the world's leading accreditation bodies.

ISO 9001: 2015

For implementing a Quality Management System for the Manufacture and Supply of Ceramic Tiles.

ISO 45001: 2018

For implementing an Occupational Health & Safety Management System for the Manufacturing of Ceramic Tiles.

ISO 14001: 2015

For implementing an Environmental Management system for the Manufacturing of Ceramic Tiles

Certificate of Merit for Energy Conservation, Bureau of Energy Efficiency, Ministry of Power A Recognition for the efficient use of energy and its conservation.

Plant has received Safety award by National Safety Council

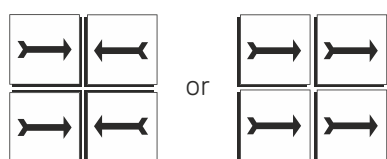
GreenPro is a product certification given by the Confederation of Indian Industry (CII) which signifies environmentally conscious life cycle of the production; certification for eco-friendly products that helps customers make an informed choice towards sustainable products.

Griha

Griha council is a joint initiative of Ministry of New and Renewable Energy, GOI and The Energy and Resources Institute of implement Griha. India's national rating system for sustainable habitats

Johnson Tile Fixing Instructions

1. Plaster the surface of the floor where the tiles will be laid with smooth finish and complete the plastering and curing at least two weeks prior to laying.
2. Before fixing Porselano tiles lay them out in the desired pattern and make sure that they give an acceptable blend of shade, colour and design. Please note that certain amount of shade and size variation is inherent in the manufacture of vitrified ceramic tiles. Certain products will have intentional shade or colour variation to get the natural and elegant look, which is an integral element of the design resembling naturally created veins or shaded effect.
3. The company bears no responsibility towards the tiles exposed to any outside process like transfers, printing, firing etc.
4. For fixing Porselano, we recommend using an appropriate product from the range of tile fixing adhesives from the ARDEX ENDURA (INDIA) PVT. LTD. Please follow the adhesive manufacturer's recommendations and instructions for best results.
5. For fixing Porselano tiles on the floor, using sand and cement, follow the instructions given below:
 - a) Use cement and sand mortar in the ratio of 1:4. Add some water to create a consistent paste.
 - b) Once the mixing has been completed do not add any further water and use the same within one hour.
 - c) Apply a 20-30 mm layer of bedding material over an area of 1 square meter at a time on the surface of the area. Apply a fine slurry to the back of the tile to ensure proper and full bedding. Press gently for even adherence at the back of the tile. **DO NOT USE AN IRON HAMMER OR SOME HEAVY MATERIAL TO PRESSTHE TILE.**
6. For fixing Porselano tiles on Wall / Dado, we recommend using an appropriate product from the range of tile fixing adhesives from the ARDEX ENDURA (INDIA) PVT. LTD. with proper troweling method for 100 per cent coverage behind the tiles and for peerless bonding. Please follow the adhesive manufacturer's recommendations and instructions for best results. We do not recommend the use of sand and cement for fixing on Dado.
7. Mark and lay out the tiles from the center of the area to be laid so that cut tiles, if any, will be on the outer edges towards the walls.
8. The work size which we try to maintain for better technical performance is 60 cm x 60 cm on average. For large format tiles we do not recommend tiles to be laid without a gap. Plastic tile spacers can be used at each tile corner to maintain even grout lines between the tiles. It is advisable to maintain a gap of 2 mm to 6 mm between every tile to allow for possible expansion as per ISO tolerance norms.
9. Complete the laying process by pressing the cut Porselano tiles firmly into place along the walls/floors.
10. Allow 3-4 days for bed curing. After this period fill the joints with cementitious or epoxy grouts from ARDEX ENDURA (INDIA) PVT. LTD. Use of grout sealant is recommended for keeping the grout free of dust.
11. Fifteen minutes after finishing the grouting process, wipe off excess grout with a damp sponge and polish the tiles with a soft and dry cloth for a clean surface. The tiles can also be cleaned with a mild acid (However, Hydrofluoric acid and its derivatives should not be used). You can also use tile & stone cleaners from ARDEX ENDURA (INDIA) PVT. LTD.
12. Please note that the company does not accept any liability in case of problems arising out of non-adherence to these fixing instructions.
13. **THE COMPANY WILL BEAR NO RESPONSIBILITY AFTER THE TILES ARE FIXED.**
14. Kindly look for an arrow (➔) on the back of the tile and follow the laying pattern as shown in Pic-1:-



NOTHING IN THESE INSTRUCTION IS A SUBSTITUTE FOR GOOD WORKMANSHIP AND SUPERVISION

ELITE PLUS

TECHNICAL SPECIFICATIONS

S. No	Property	ISO 13006:2018 / EN 14411 Group Blb Requirement	IS - 15622:2017 Group Blb	JOHNSON TILES 60X120	Test Method
A) Dimensions Quality		whichever is less applicable. Rectified	Rectified		
1	Deviation in Length & Width	± 0.3% or ±1.0mm	± 0.1 %	± 0.1 %	ISO 10545-2 / IS 13630-1
2	Deviation in Thickness	± 5% or ± 0.5mm	± 5 %	± 4 %	ISO 10545-2 / IS 13630-1
3	Straightness of Sides	± 0.3% or ±0.8mm	± 0.1 %	± 0.1 %	ISO 10545-2 / IS 13630-1
4	Rectangularity	± 0.3% or ±1.5mm	± 0.1 %	± 0.1 %	ISO 10545-2 / IS 13630-1
5	Surface Flatness	± 0.4% or ±1.8mm	± 0.5 %	± 0.3 %	ISO 10545-2 / IS 13630-1
6	Surface Quality	Min 95%	Min 95%	Min 95%	ISO 10545-2 / IS 13630-1
B) Physical Property					
1	Water Absorption	0.5%<E≤3,	0.08%<E≤3, Individual 3.3 max	2-3%	ISO 10545-3 / IS 13630-2
2	Scratch hardness of surface (Moh's scale)	-	≥ 5	≥ 5	IS 13630 part 13
3	Flexural Strength (Average MOR)	≥30N/mm ² , Individual 27 min	≥30N/mm ² , Individual 27 min	≥33N/mm ²	ISO 10545-4 / IS 13630-6
4	Breaking Strength	≥1100N	≥1100N	≥ 1200 N	ISO 10545-4 / IS 13630-6
5	Impact Resistance	report value	≥ 0.55	≥ 0.55	ISO 10545-5 / IS 13630 -14
6	Crazing Resistance	Report cycle	4 cycle	No damage	ISO 10545-11 / IS 13630- 9
7	Surface Abrasion Resistance (PEI Rating)	Report abrasion class	Class II, Min	Min PEI III - IV	ISO 10545-7 / IS 13630 - 11
8	Skid resistance (Coefficient of Friction)	NA	Manufacturer to declare	0.3 to 0.5	ISO 10545 -17 /ANSI A 326.3
9	Bulk Density, in (g/cc)	≥ 2.0	≥ 2.0	≥ 2.0	ASTM C373-16 / IS 13630-2
10	Moisture expansion	Manufacturer to declare	Max 0.02 mm/m	≤ 0.02 mm/m	IS 13630-part 3 /ISO 10545-10
11	Frost Resistance	Manufacturer to declare	Manufacturer to declare	No Damage	ISO 10545-12 / IS 13630-10
12	Color Resistance to UV light	report result	report result	No change in color	DIN 51094
C) Chemical Properties					
1	Resistance to Chemicals				
a	Resistance to Low concentrations of acids & alkalis	report resistance class	report resistance class	GLA	ISO 10545-13 / IS 13630-8
b	Resistance to High concentrations of acids & alkalis	report resistance class	report resistance class	GHA	ISO 10545-13 / IS 13630-8
c	Resistance to household chemicals and swimming pool salts	Min B	AA min	B (ISO) / AA (BIS)	ISO 10545-13 / IS 13630-8
2	Stain resistance	Min Class 3	Class 1 min	Class 3 (ISO) / Class 1 (IS)	ISO 10545-14 / IS 13630-8
D) Thermal Properties					
1	Linear Thermal Expansion	Report value	≤7 x 10 ⁻⁶ K ⁻¹	≤7 x 10 ⁻⁶ K ⁻¹	ISO 10545-8 / IS 13630-4
2	Thermal shock resistance	-	10 Cycle, Min	10 Cycle, Min	ISO 10545-9 / IS 13630 -5

Ramp Test: Suitable for all kind of surfaces (Plain, structural..etc)

Slider (BOT-3000E Digital Tribometer) : suitable for plain / smooth surface and not working for structural / profiled surface

PACKAGING DETAILS

Product	Nominal Size (cm)	No of Tiles/Box	Approx Area/Box (sq m)	Approx Weight/Box (kgs)	Approx Cartons/ 20' Container	Approx Area per Container (sq m)
Johnson 60x120 Wall Tiles	60x120	2	1.44	29	931	1341

YOU CAN ALSO REACH US AT

Region	Branch	Tel.:
East	Kolkata	033-46021880
	Bhubaneshwar	0674 6539836/37/2430240
	Siliguri	9836065812
	Guwahati	8135846661/7575900492
	Ranchi	9576038118
West	Mumbai	022-40647500
	Thane	022-25867600 / 666
	Pune	020-41301164 / 31
	Aurangabad	8669600748
	Ahmedabad	079-48480010
	Raipur	0771-4919129
	Indore	0731-4007441
North	Jalandhar	0182-4505038 / 39
	Chandigarh	0172-4697100
	Delhi	011-49526600

Region	Branch	Tel.:
North	Jaipur	0141-2368329
	Lucknow	0522-2721699
	Varanasi	0542-2222620
	Patna	9576038781
South	Bengalure	080-22234310/080-22234330
	Hyderabad	040-29802270 / 71 / 72
	Vijayawada	9666429666
	Vishakhapatnam	0891-2796376
	Tirupati	9121228960
	Kochi	0484-4871277
	Kozhikode	0422-4382698
	Thiruvananthapuram	0471-2720141
	Chennai	044-28544116 / 28541881
	Coimbatore	0422-4382698
	Madurai	0452-4355584 / 4355594
	Trichy	9486718544

EXPERIENCE CENTERS

Location	Address	Tel.:
Kolkatta	HOUSE OF JOHNSON - 83 JBS Haldane Avenue, TOPSIA Trinity towers Kolkata - 700046	033-46021880
Guwahati	HOUSE OF JOHNSON - 1st Floor, Above Royal Riders Honda, Near Rahul Kata, Pub Bragaon, Garchuk, Guwahati - 781035	7575900492
Bhubaneshwar	HOUSE OF JOHNSON - Ray Tower, 1st Floor, N4/237, Indradhanu market, IRC Village, Nayapalli, Bhubaneshwar, Orissa - 751015	0674 6539836/37/2430240
Patna	HOUSE OF JOHNSON - SK Builders and colonizer Pvt.Ltd.,1st Floor, SK Palace, Saguna more, Bihar - 801503.	9702651243
Chandigarh	HOUSE OF JOHNSON - SCO 214, sector14, Panchkula, Haryana - 134109	0172-4637724
Delhi	HOUSE OF JOHNSON - First & Mezzanine Floor, B-1/G-3, Mohan Industrial Estate, Mathura Road, New Delhi - 110094.	11-49526600
Lucknow	HOUSE OF JOHNSON - 1st Floor, Prithvi Ratan Height,Plot No CP-4, Vijayant khand - 3, Gomtinagar Yojna, Lucknow - 226028	0522-2721699
Varanasi	HOUSE OF JOHNSON - Ashakunj, 1st floor, D59/103 D4, Opp Siddharth Complex, Sigra Mehmoorganj Road, Varanasi - 221010	0542-2222620
Aurangabad	House Of Johnson Aurangabad - Gut No 16/44, NH-211, Near Balapur Phata, Near Ramkisan Lawns, Beed Bypass Road Aurangabad 431005	8669600748
Pune	HOUSE OF JOHNSON - Sable House, Poona Snuff Factory, Sr. No 11A, Plot 408/4/5, Satara Road, Gultekadi, Pune - 411037	7350009364
Thane	HOUSE OF JOHNSON - Shop No.5, Gr.Floor, Cosmos Jewels, Near Dmart, Anand Nagar, Ghodbunder Road, Thane West - 400615	8424003247
Mumbai - Andheri	HOUSE OF JOHNSON - 1st flr, Bonanza, Sahar Plaza, Nr Hotel Kohinoor continental, J B Nagar, Andheri Kurla Road, Andheri East, Mumbai - 400059	8108030975
Ahmedabad	HOUSE OF JOHNSON - F 106-107, Shivalik Plaza, IIM Road, Panjrapole Cross Road, Ahmedabad, Gujarat - 380015	079-48480010
Indore	HOUSE OF JOHNSON - Shop No 5, 6, 7 and 8, Upper Ground Floor, Exotica, Shalimar Township, Village Niranjapur, A. B. Road, Indore, Madhya Pradesh - 452001	0731-4007441
Raipur	HOUSE OF JOHNSON - 2nd Floor, MM Silver Plaza, Opp Udyog Bhawan, Ring Road - 1, Raipur, Chattisgarh - 492001	771-4919129
Coimbatore	HOUSE OF JOHNSON - Elysium Towers, Park Gate Rd, No. 21, ATT Colony, Gopalapuram, Coimbatore - 641018	0422-4382698
Chennai	HOUSE OF JOHNSON - 82, 84 & 86 Bascon Maeru, 1st floor, Kodambakkam High Road, Nungambakkam, Chennai - 600034	044-48611632
Kochi	HOUSE OF JOHNSON - Door no. 11/300 f, Next to VTJ Hyundai, NH 47 Kundanoor, Maradu, Kochi, Ernakulam - 682304	0484-4871277
Kozhikode	HOUSE OF JOHNSON - Tilal Tower, Near Nexa Showroom, Kudilthod, Malaparamba bypass, Kozikode, Kerala - 673017	0495-2357505
Thiruvananthapuram	HOUSE OF JOHNSON -1st Floor, Sreedhanya Apex, TC 22/3720 (4) Vellayambalam, Sasthamangalam PO, Thiruvananthapuram, Kerala - 695010	0471-2720141
Bengalure	HOUSE OF JOHNSON - No.39, Rajaram Mohan Roy Road , Opp. Kanteerava indoor Stadium, Bengalure - 560027	080-22234310/080-22234330
Bengalure	HOUSE OF JOHNSON - Dodda Banaswadi, Opp. New Baldwin Residential School, Bengalure-560043	080-41692976 / 41692060
Hyderabad	HOUSE OF JOHNSON - SP Jubilee Crown (3rd Floor) Plot - 1270, Road No.36, Jubilee Hills, Hyderabad - 500033	8897525143

For address and contact numbers of our Johnson Exclusive Showrooms and Authorized Retailers, please visit our website www.hrjindia.com



Toll Free No.: 1800-210-7484

WhatsApp No.: +91 84510 57484

Email: tiles.customercare@prismjohnson.in

For Export Enquires, Email:

exports.customercare@prismjohnson.in

PRISM JOHNSON LIMITED

H & R JOHNSON (INDIA) DIVISION

Corporate Office:

7th Floor, Windsor, C. S. T. Road, Kalina,
Santacruz (East), Mumbai - 400 098, India.

Tel: +91-22-40647300

Website: www.hrjohnsonindia.com

Registered Office: 305, Laxmi Niwas Apartments, Ameerpet
Hyderabad - 500016, Telangana, India.

Download App



Download E-Catalogue



HRJIndia



@hrjohnsonofficial



Hrjohnsonindia



hrjohnson_india



h-&-r-johnson-india-prism-johnson-limited



HRJohnsonIndia1