



 **JOHNSON[®]TILES**
NOT JUST TILES, LIFESTYLES.[®]

**ELITE PLUS, ELITE & BASIC
WALL TILE COLLECTION**

30x60 CM, 30x45 CM & 37.5 x 25 CM



Johnson Elite & Elite Plus 30X60, 30X45 & 37.5X25 cm Wall Tile Concepts

Every once in a while there comes a time that calls for us to relook, reimagine the things that we treasure. This is one such time for your walls. Johnson introduces Elite Plus 30x60 cm, Elite 30x45 cm and Basic 37.5x25 cm Wall Tile Concepts. Just one look and you will know that these are no ordinary tiles. A collection so grand, so elegant, it ends up speaking volumes about your stature. The sheer spunk in design. The intensity in patterns. The vivacity of colours. The majesty in its size. You will run out of reasons to admire the collection so full of life. Digital printing gracefully captures nature's flora, beauty of marbles and stones to the minutest. What's more, there's a special set of tiles designed specifically for the kitchen area, to remind you every single time of the homely meals and warm conversations waiting to be served in there. Though they are primarily wall tiles, they come with a special set of floor tiles in a bid to ensure a seamless flow of design from the walls to the floor. To give you further choice in floor tiles, the collection presents floor tiles in 60x60, 30x30, 30.6x30.6 and 40x40 cm sizes. Go ahead, explore the wide range of nature inspired designs. A new, fresh take on wall fashion begins with Johnson Elite & Elite Plus wall tile collection.





DOWN
EX

WALL

30x60 cm

Glossy	08
Glossy Kitchen Concepts	24

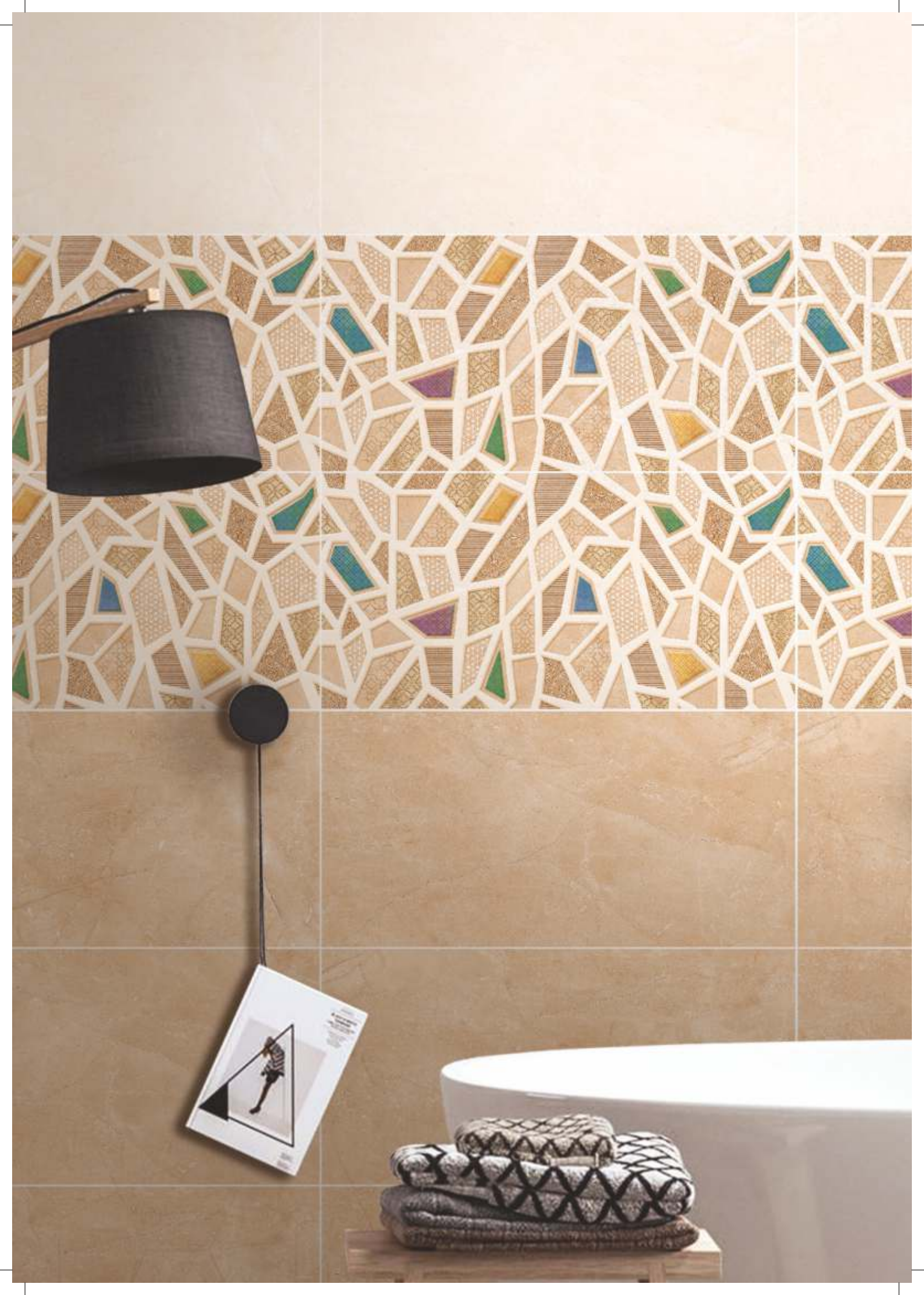
30x45 cm

Glossy	28
Glossy Kitchen Concepts	52
Glossy - Pooja	58
Glossy - Elevation	60
Matt	62
Matt Kitchen Concepts	64
Matt Elevation	66

37.5x25 cm

Glossy	70
Glossy Kitchen Concepts	74

Technical & Packing Details	80
Branch & EC Details	81



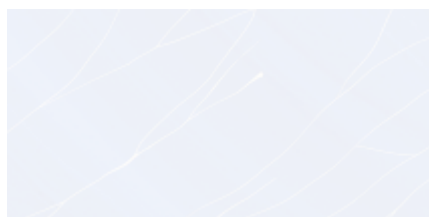
**30X60 CM
WALL CONCEPTS**



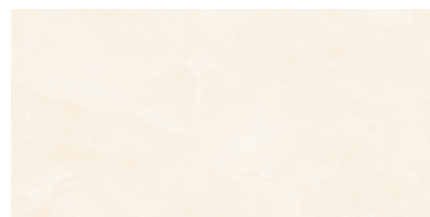
WALL



AMBROSSIA LT



ARISTO LT



ARIZONA LT



AMBROSSIA HL



ARISTO HL



ARIZONA HL



AMBROSSIA DK



ARISTO DK



ARIZONA DK

FLOOR



AMBROSSIA - MATT
30x30 cm CF#



ARISTO - MATT
30x30 cm CF#



ARIZONA - MATT
30x30 cm CF#

CF#-COORDINATED FLOOR TILE



WALL



ARMANI LT



BLINT LT



CANFA LT



ARMANI HL



BLINT HL



CANFA HL



ARMANI DK



BLINT DK

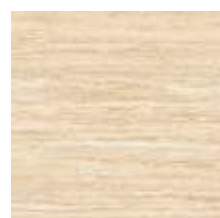


CANFA DK

FLOOR



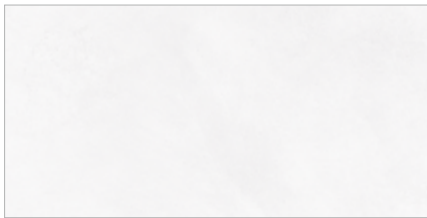
ARMANI - MATT
30x30 cm CF#



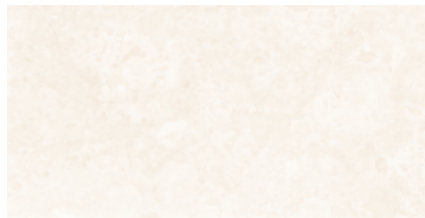
BLINT - MATT
30x30 cm CF#



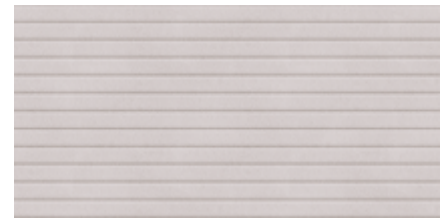
CANFA - MATT
30x30 cm CF#



CLIFF LT



CONVEX LT



DAXTON LT



CLIFF HL



CONVEX HL



DAXTON HL



CLIFF DK



CONVEX DK

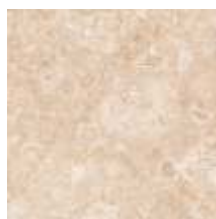


DAXTON DK

FLOOR



CLIFF - MATT
30x30 cm CF#



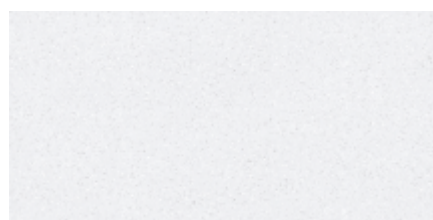
CONVEX - MATT
30x30 cm CF#



DAXTON - MATT
30x30 cm CF#

CF#-COORDINATED FLOOR TILE

WALL



DONZEL BRIGHT



FARON LT



FRAGRANCE BRIGHT



DONZEL DECOR



FARON HL



FRAGRANCE DECOR



DONZEL DEEP



FARON DK



FRAGRANCE DEEP

FLOOR



DONZEL - MATT
30x30 cm CF#



FARON - MATT
30x30 cm CF#



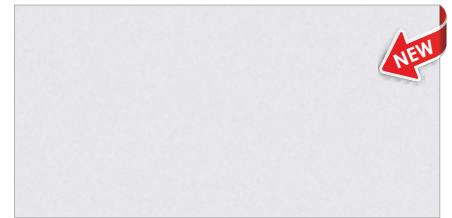
FRAGRANCE - MATT
30x30 cm CF#



GARFIN LT



GLENTON LT



GRANIS LT



GARFIN HL



GLENTON HL



GRANIS HL



GARFIN DK



GLENTON DK



GRANIS DK

FLOOR



GARFIN - MATT
30x30 cm CF#



GLENTON - MATT
30x30 cm CF#



GRANIS - MATT
30x30 cm CF#

*RANDOM PHASES AVAILABLE

CF#-COORDINATED FLOOR TILE

WALL



HADWIN LT



HAUMEA LT



HORROX LT



HADWIN HL



HAUMEA HL



HORROX HL



HADWIN DK



HAUMEA DK



HORROX DK

FLOOR



HADWIN - MATT
30x30 cm CF#



HAUMEA - MATT
30x30 cm CF#



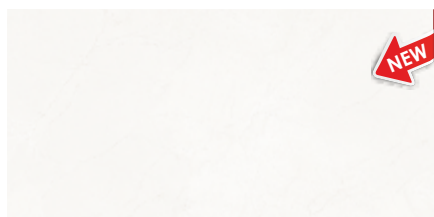
HORROX - MATT
30x30 cm CF#



WALL



IKIN LT



IVELL LT*



KINCEY LT



IKIN HL



IVELL HL



KINCEY HL



IKIN DK



IVELL DK*



KINCEY DK

FLOOR



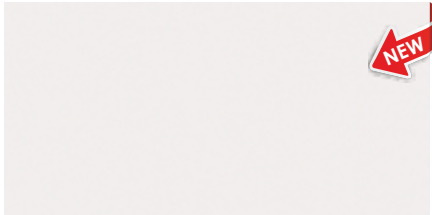
IKIN - MATT
30x30 cm CF#



IVELL - MATT
30x30 cm CF#



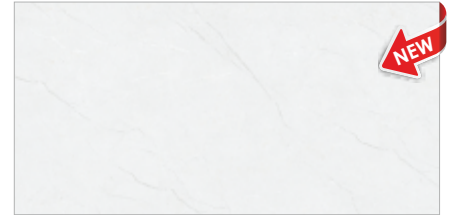
KINCEY - MATT
30x30 cm CF#



LANXON LT



LUX LT



MABIN LT



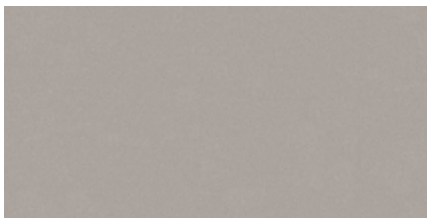
LANXON HL



LUX HL



MABIN HL



LANXON DK



LUX DK



MABIN DK

FLOOR



LANXON - MATT
30x30 cm CF#



LUX - MATT
30x30 cm CF#



MABIN - MATT
30x30 cm CF#

*RANDOM PHASES AVAILABLE CF#-COORDINATED FLOOR TILE

WALL



MINX LT



MODE LT



MONOROVIA BRIGHT



MINX HL



MODE HL



MONOROVIA DECOR



MINX DK

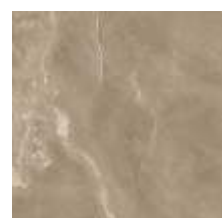


MODE DK



MONOROVIA DEEP

FLOOR



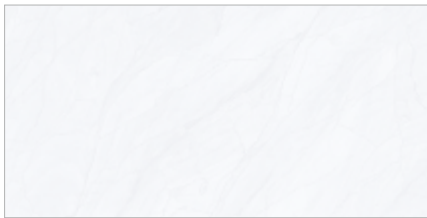
MINX - MATT
30x30 cm CF#



MODE - MATT
30x30 cm CF#



MONOROVIA - MATT
30x30 cm CF#



NAPLEM LT



PEARL CRISTAL LT



PINTOR LT



NAPLEM HL



PEARL CRISTAL HL



PINTOR HL



NAPLEM DK



PEARL CRISTAL DK



PINTOR DK

FLOOR



NAPLEM - MATT
30x30 cm CF#



PEARL CRISTAL - MATT
30x30 cm CF#



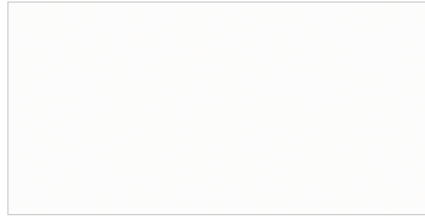
PINTOR - MATT
30x30 cm CF#

CF#-COORDINATED FLOOR TILE

WALL



PRINN LT



SUNBRIGHT LT



SWING BRIGHT



PRINN HL



SUNBRIGHT HL*



SWING DECOR



PRINN DK



SUNBRIGHT HL*

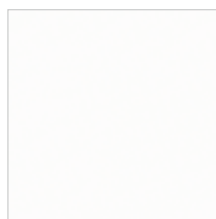


SWING BRIGHT

FLOOR



PRINN - MATT
30x30 cm CF#



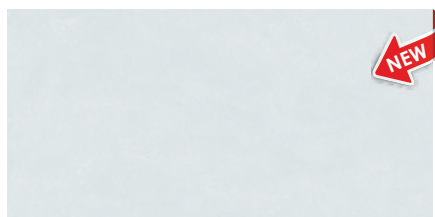
SUNBRIGHT - MATT
30x30 cm CF#



SWING - MATT
30x30 cm CF#



WALL



TACON LT



THUNDER LT



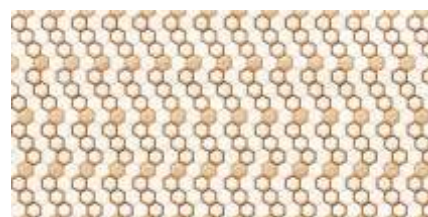
TRAVILLE LT



TACON HL



THUNDER HL 1



TRAVILLE HL



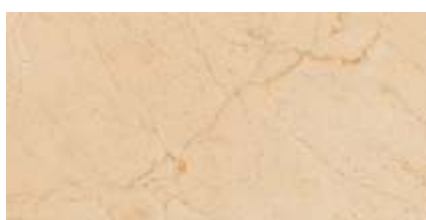
TACON DK



THUNDER HL 2



TRAVILLE DK



THUNDER DK

FLOOR



TACON - MATT
30x30 cm CF#



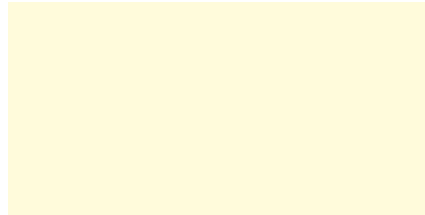
THUNDER - MATT
30x30 cm CF#



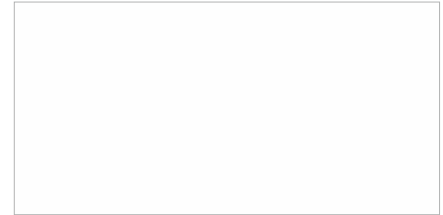
TRAVILLE - MATT
30x30 cm CF#



WAYLER LT



PLAIN IVORY



PLAIN WHITE



WAYLER HL



WAYLER DK

FLOOR



WAYLER - MATT
30x30 cm CF#

CF#-COORDINATED FLOOR TILE

WALL - KITCHEN CONCEPT



LANCE LT



ORBIT LT



LANCE HL



ORBIT HL



LANCE LT



ORBIT DK





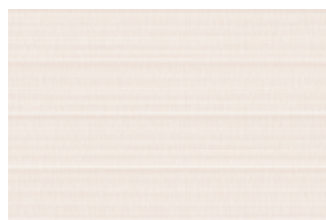
**30X45 CM
WALL CONCEPTS**



WALL



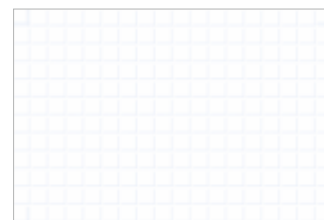
ACASO LT



ACIES CREAM



ALTREE LT



ASPINA LT



ACASO HL*



ACIES MARG HL



ALTREE HL



ASPINA HL



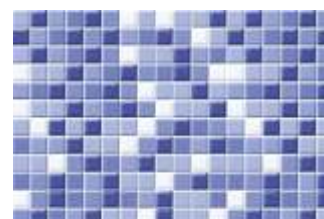
ACASO HL*



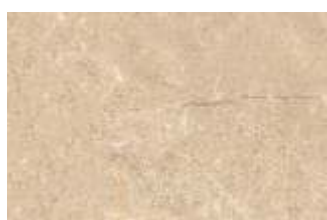
ACIES BROWN



ALTREE DK



ASPINA DK

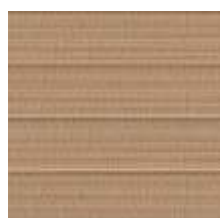


ACASO DK

FLOOR



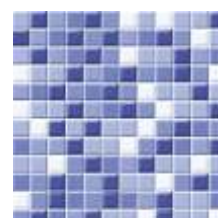
ACASO - MATT
30x30 cm CF#



ACIES - MATT
30x30 cm CF#



ALTREE - MATT
30x30 cm CF#



ASPINA - MATT
30x30 cm CF#

CF#-COORDINATED FLOOR TILE



WALL



BAILEN LT



BARSTOW LT



BARTIN LT



BENIMAC LT



BAILEN HL



BARSTOW HL



BARTIN HL



BENIMAC HL



BAILEN DK



BARSTOW DK



BARTIN DK

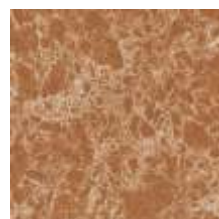


BENIMAC DK

FLOOR



BAILEN - MATT
30x30 cm CF#



BARSTOW - MATT
30x30 cm CF#



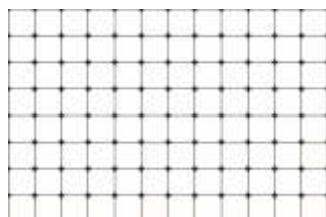
BARTIN - MATT
30x30 cm CF#



BENIMAC - MATT
30x30 cm CF#



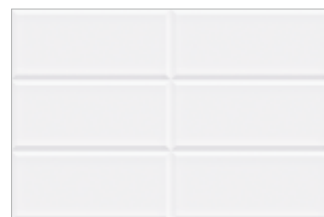
BLEAST LT



CAJA WH



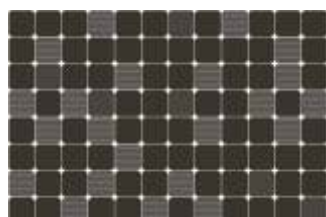
CALLON LT



CASPER LT



BLEAST HL1



CAJA BK



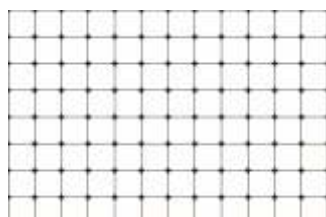
CALLON HL



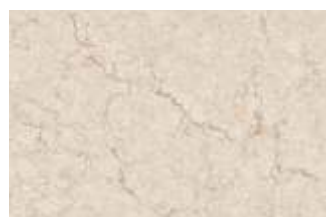
CASPER HL



BLEAST HL2



CAJA WH



CALLON DK



CASPER DK

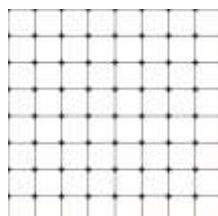


BLEAST DK

FLOOR



BLEAST - MATT
30x30 cm CF#



CAJA - MATT
30x30 cm CF#



CALLON - MATT
30x30 cm CF#



CASPER - MATT
30x30 cm CF#

CF#-COORDINATED FLOOR TILE

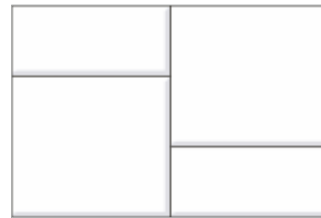
WALL



CASSIN LT



CLOUDY LT



CUBIXA LT



CUBOS LT



CASSIN HL



CLOUDY HL1



CUBIXA HL



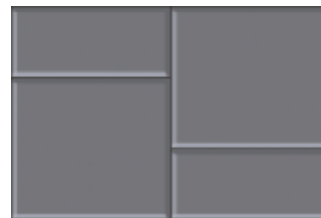
CUBOS HL



CASSIN DK



CLOUDY HL2



CUBIXA DK



CUBOS DK



CLOUDY DK

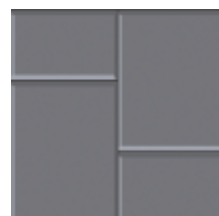
FLOOR



CASSIN - MATT
30x30 cm CF#



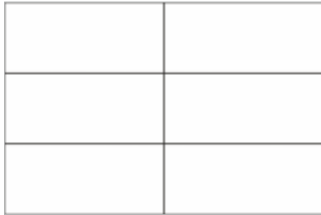
CLOUDY - MATT
30x30 cm CF#



CUBIXA - MATT
30x30 cm CF#



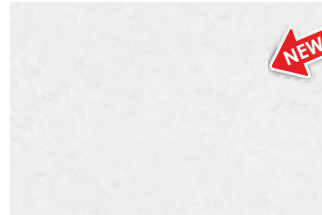
CUBOS - MATT
30x30 cm CF#



CURTIS LT



DASKANT LT



EDDISON LT



EDINE LT



CURTIS HL



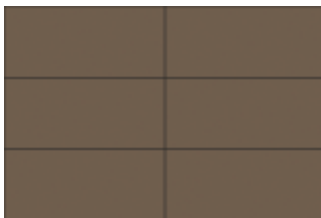
DASKANT HL



EDDISON HL



EDINE HL



CURTIS DK



DASKANT DK



EDDISON DK



EDINE DK

FLOOR



CURTIS - MATT
30x30 cm CF#



DASKANT - MATT
30x30 cm CF#



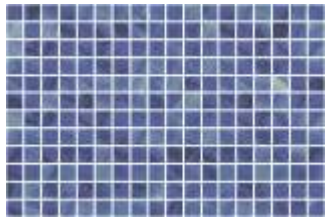
EDDISON - MATT
30x30 cm CF#



EDINE - MATT
30x30 cm CF#

CF#-COORDINATED FLOOR TILE

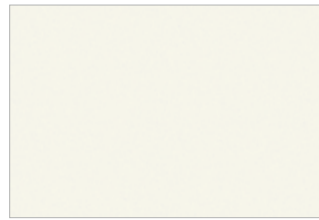
WALL



ELIZA AQUA
(Special Colors)



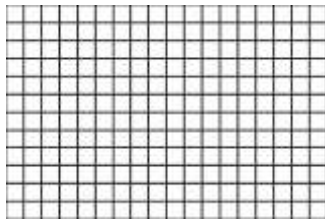
FAXON LT



FIRS BRIGHT



FRASER LT



ELIZA WHITE
(Special Colors)



FAXON HL



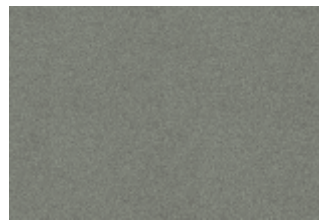
FIRS FEATURE



FRASER HL



FAXON DK



FIRS DK

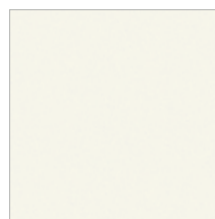


FRASER DK

FLOOR



FAXON - MATT
30x30 cm CF#



FIRS - MATT
30x30 cm CF#



FRASER - MATT
30x30 cm CF#

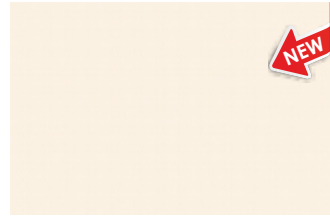
CF#-COORDINATED FLOOR TILE



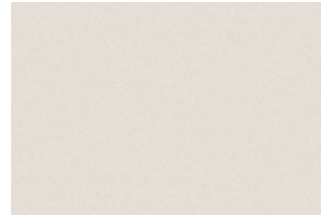
WALL



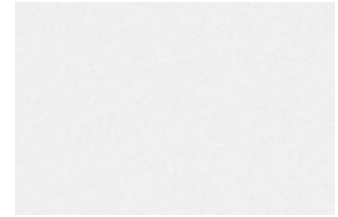
GABLES BRIGHT



GARCIA LT



GRAIN LT



GRANULA WHITE



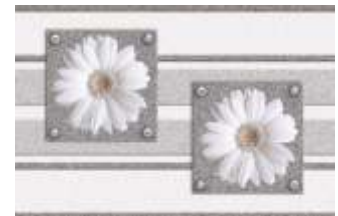
GABLES FEATURE



GARCIA HL



GRAIN HL



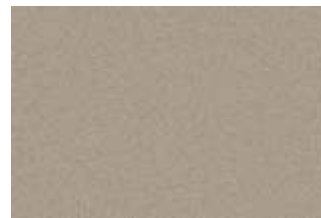
GRANULA FLOWER HL



GABLES DARK



GARCIA DK



GRAIN DK



GRANULA BLACK

FLOOR



GABLES - MATT
30x30 cm CF#



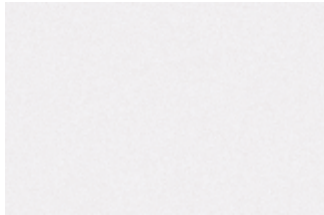
GARCIA - MATT
30x30 cm CF#



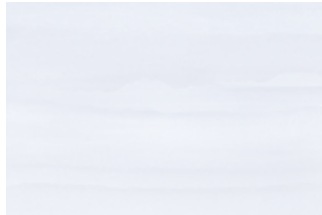
GRAIN - MATT
30x30 cm CF#



GRANULA BLACK - MATT
30x30 cm CF#



GRANULA WHITE



HABINA LT



HADDOCK LT



HAILES LT



GRANULA GARDEN HL



HABINA HL



HADDOCK HL1



HAILES HL



GRANULA BLACK



HABINA DK



HADDOCK HL2



HAILES DK



HADDOCK DK

FLOOR



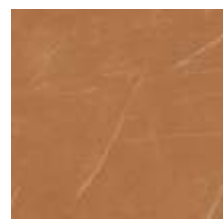
GRANULA BLACK - MATT
30x30 cm CF#



HABINA - MATT
30x30 cm CF#



HADDOCK - MATT
30x30 cm CF#



HAILES - MATT
30x30 cm CF#

CF#-COORDINATED FLOOR TILE

WALL



HAITT LT



HANNEL LT



IMPHAL LT



INSPIRA LT



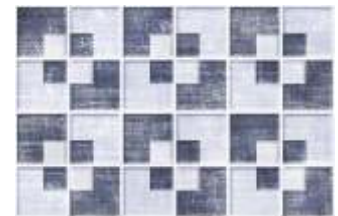
HAITT HL



HANNEL HL



IMPHAL HL



INSPIRA HL



HAITT DK



HANNEL DK



IMPHAL DK



INSPIRA DK

FLOOR



HAITT - MATT
30x30 cm CF#



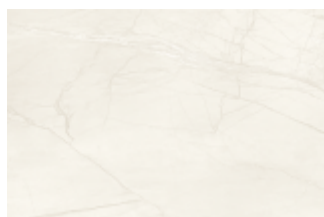
HANNEL - MATT
30x30 cm CF#



IMPHAL - MATT
30x30 cm CF#



INSPIRA - MATT
30x30 cm CF#



JASON LT



JECKS LT



KOSER LT



LAMPIN LT



JASON HL



JECKS HL



KOSER HL



LAMPIN HL



JASON DK



JECKS DK



KOSER DK



LAMPIN DK

FLOOR



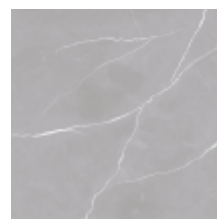
JASON - MATT
30x30 cm CF#



JECKS - MATT
30x30 cm CF#



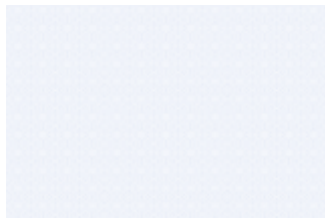
KOSER - MATT
30x30 cm CF#



LAMPIN - MATT
30x30 cm CF#

CF#-COORDINATED FLOOR TILE

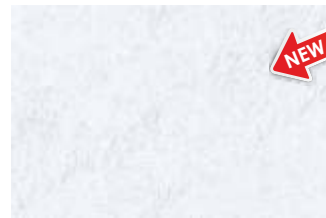
WALL



LAURENS BRIGHT



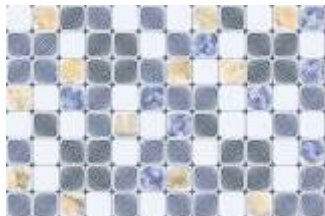
LEGON LT



LEWELL LT



LIGO LT



LAURENS FEATURE



LEGON HL



LEWELL HL



LIGO HL



LAURENS DK



LEGON DK



LEWELL DK



LIGO DK

FLOOR



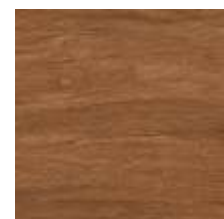
LAURENS - MATT
30x30 cm CF#



LEGON - MATT
30x30 cm CF#



LEWELL - MATT
30x30 cm CF#



LIGO - MATT
30x30 cm CF#

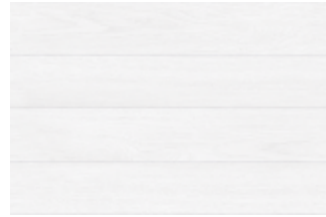
CF#-COORDINATED FLOOR TILE



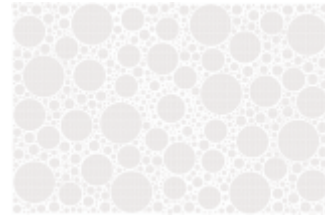
WALL



LINEO CREAM



MANILA LT



MEADOW BRIGHT



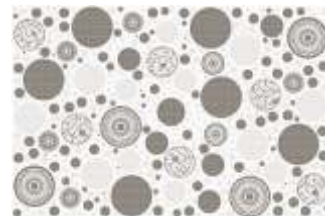
MELLOW LT



LINEO BLOOMZ



MANILA HL



MEADOW FEATURE



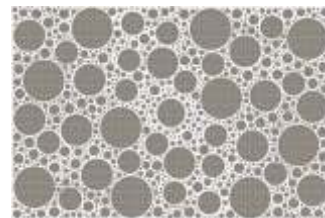
MELLOW HL



LINEO BROWN



MANILA DK

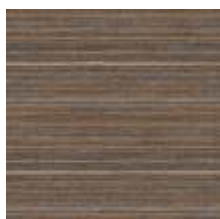


MEADOW DARK



MELLOW DK

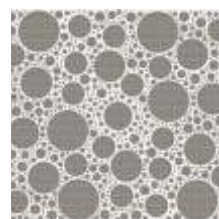
FLOOR



LINEO BROWN - MATT
30x30 cm CF#



MANILA - MATT
30x30 cm CF#



MEADOW - MATT
30x30 cm CF#



MELLOW - MATT
30x30 cm CF#



MOGANO WHITE



NATIF LT



OLIFF LT



ONDE WHITE



MOGANO HL 1



NATIF HL



OLIFF HL



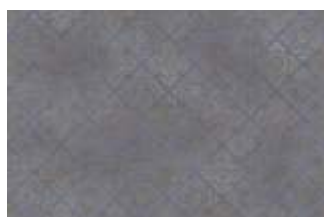
ONDE HL



MOGANO HL 2



NATIF DK



OLIFF DK



ONDE GREY



MOGANO GREY

FLOOR



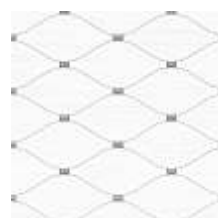
MOGANO - MATT
30x30 cm CF#



NATIF - MATT
30x30 cm CF#



OLIFF - MATT
30x30 cm CF#



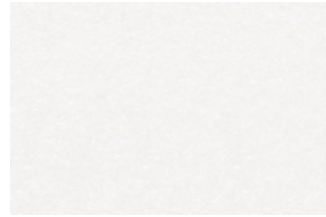
ONDE - MATT
30x30 cm CF#

CF#-COORDINATED FLOOR TILE

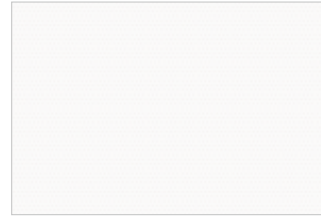
WALL



OSAGE LT



PAINTER LT



PAISLEY WHITE



PALINO LT



OSAGE HL



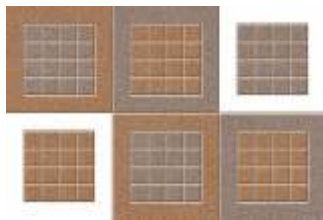
PAINTER HL



PAISLEY HL



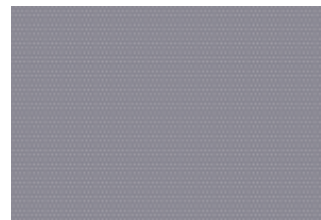
PALINO HL



OSAGE DK



PAINTER DK



PAISLEY GREY



PALINO DK

FLOOR



OSAGE - MATT
30x30 cm CF#



PAINTER - MATT
30x30 cm CF#



PAISLEY - MATT
30x30 cm CF#



PALINO - MATT
30x30 cm CF#



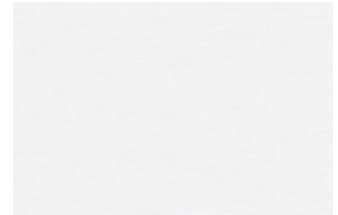
PILTON LT



QUERCIA LT BROWN



QUERCIA STRIPS LT



QUILLON WHITE



PILTON HL



QUERCIA HL



QUERCIA STRIPS DK



QUILLON HL



PILTON DK



QUERCIA DK BROWN



QUERCIA STRIPS LT



QUILLON GREY

FLOOR



PILTON - MATT
30x30 cm CF#



QUERCIA - MATT
30x30 cm CF#



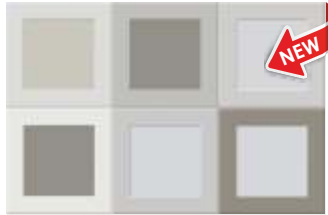
QUERCIA STRIPS - MATT
30x30 cm CF#



QUILLON GREY - MATT
30x30 cm CF#

CF#-COORDINATED FLOOR TILE

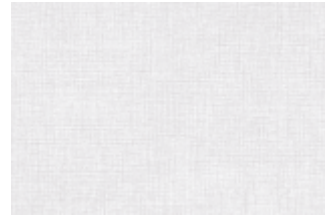
WALL



RABBATO LT



RECENT LT



RIZZOLI LT



SANDIEGO LT



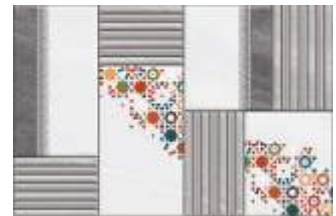
RABBATO HL



RECENT HL



RIZZOLI HL



SANDIEGO HL



RABBATO DK



RECENT DK



RIZZOLI DK



SANDIEGO DK

FLOOR



RABBATO - MATT
30x30 cm CF#



RECENT - MATT
30x30 cm CF#



RIZZOLI - MATT
30x30 cm CF#

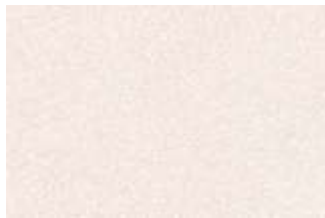


SANDIEGO - MATT
30x30 cm CF#

CF#-COORDINATED FLOOR TILE



WALL



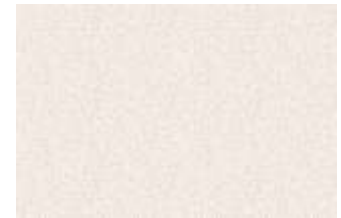
SANDS WHITE



SCINTILA LT



SENZ LT



SERRO LT



SANDS SPIGATO



SCINTILA HL



SENZ HL1



SERRO HL



SANDS BROWN



SCINTILA DK



SENZ HL2



SERRO DK



SENZ DK

FLOOR



SANDS - MATT
30x30 cm CF#



SCINTILA - MATT
30x30 cm CF#



SENZ - MATT
30x30 cm CF#



SERRO - MATT
30x30 cm CF#



SUNZ WHITE



TINTON LT



TUNISIA LT



TWEEDO IVORY



SUNZ HL



TINTON HL



TUNISIA HL



TWEEDO BROWN HL



SUNZ GREY



TINTON DK



TUNISIA DK



TWEEDO BROWN

FLOOR



SUNZ - MATT
30x30 cm CF#



TINTON - MATT
30x30 cm CF#



TUNISIA - MATT
30x30 cm CF#



TWEEDO - MATT
30x30 cm CF#

CF#-COORDINATED FLOOR TILE

WALL



ULLIOT LT



VERRIER LT



VESIE LT



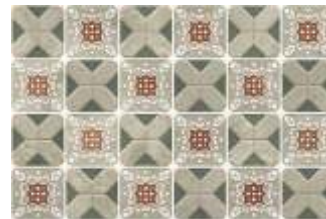
VICARAGE BRIGHT



ULLIOT HL



VERRIER HL



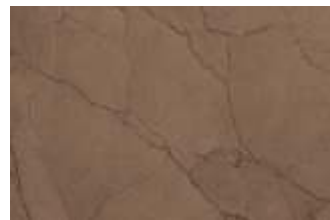
VESIE HL



VICARAGE FEATURE



ULLIOT DK



VERRIER LT



VESIE LT

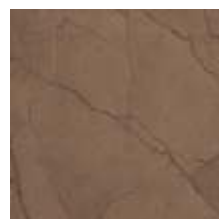


VICARAGE DARK

FLOOR



ULLIOT - MATT
30x30 cm CF#



VERRIER - MATT
30x30 cm CF#



VESIE - MATT
30x30 cm CF#



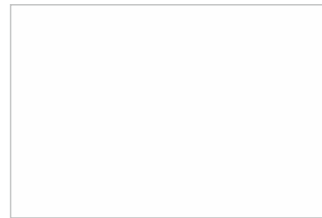
VICARAGE - MATT
30x30 cm CF#



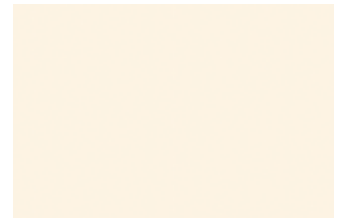
WOODY LT



ZESTRA LT



PLAIN WHITE



IVORY



WOODY HL 1



ZESTRA HL



WOODY HL 2



ZESTRA DK



WOODY DK

FLOOR



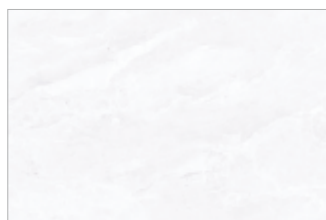
WOODY - MATT
30x30 cm CF#



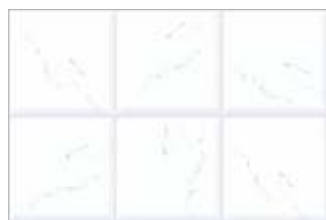
ZESTRA - MATT
30x30 cm CF#

CF#-COORDINATED FLOOR TILE

WALL - KITCHEN CONCEPT



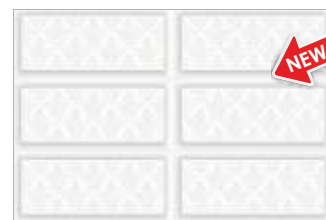
CLARENCE BRIGHT



ETHOS LT



FABINA LT



FAVORA LT



CLARENCE FEATURE*



ETHOS HL*



FABINA HL*



FAVORA HL



CLARENCE FEATURE*



ETHOS HL*



FABINA HL*



FAVORA HL



CLARENCE DARK

*RANDOM PHASES AVAILABLE



WALL - KITCHEN CONCEPT



GOURMIA LT



MACKAY LT



NOOK BRIGHT



OLIVE LINE LT



GOURMIA HL



MACKAY HL*



NOOK FEATURE*



OLIVE LINE HL



GOURMIA DK



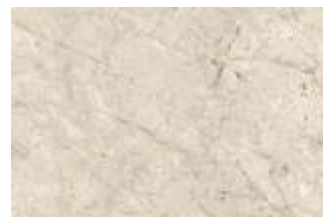
MACKAY HL*



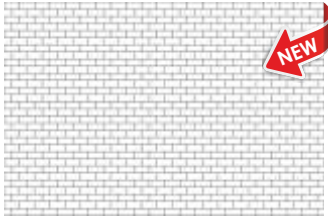
NOOK FEATURE*



OLIVE LINE DK



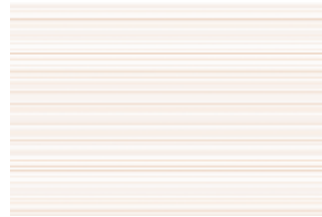
NOOK DARK



PALLAZI LT



PINE PITCH



RAYURES WHITE



STRIA LT



PALLAZI HL*



PINE PITCH HL



RAYURES HL



STRIA HL*



PALLAZI HL*



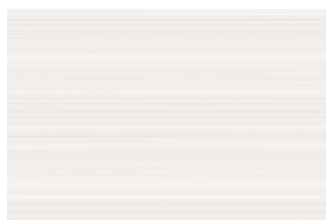
RAYURES BROWN



STRIA HL*

*RANDOM PHASES AVAILABLE

WALL - KITCHEN CONCEPT



STRISCE CREAM



VEDURA LT



WILLOWS BRIGHT



STRISCE HL



VEDURA HL*



WILLOWS FEATURE*



STRISCE COFFEE



VEDURA HL*



WILLOWS FEATURE*



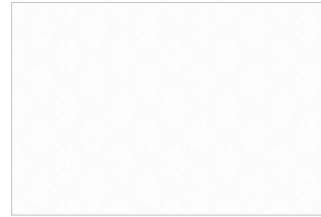
WALL - POOJA CONCEPT



ATHARVA LT



AVIGHNA LT



DEVINE LT



ATHARVA HL1



AVIGHNA HL1



DEVINE HL 1



ATHARVA HL2



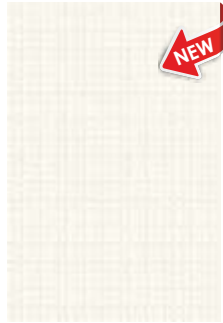
AVIGHNA HL2



DEVINE HL 2



ACHINTYA - LT



MAITRI - LT



ACHINTYA - HL-1



MAITRI - HL-1



ACHINTYA - HL-2



MAITRI - HL-2

ELITE

30X45 CM

GLOSSY

WALL - ELEVATION



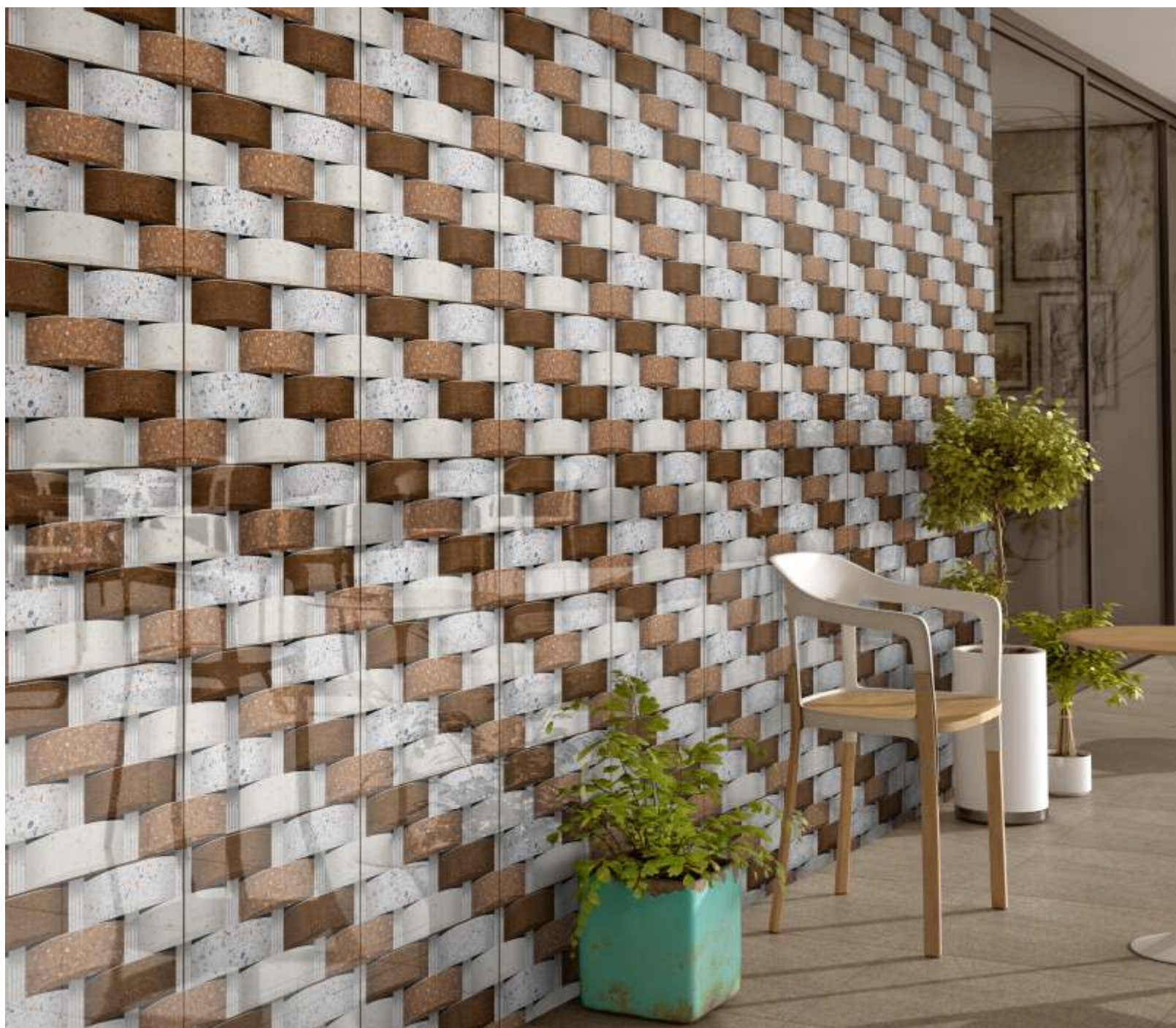
AMPHLET AQUA



AMPHLET BROWN

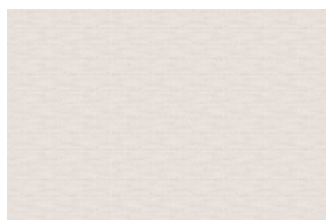


GABRO STONE





WALL



PLAID BEIGE



SAMBUCO LT



TEXTURA CREAM



PLAID HL



SAMBUCO HL



TEXTURA HL



PLAID BROWN

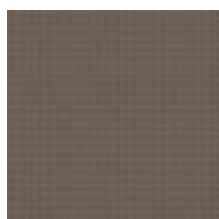


SAMBUCO DK



TEXTURA BROWN

FLOOR



PLAID - MATT
30x30 cm CF#



SAMBUCO - MATT
30x30 cm CF#



TEXTURA - MATT
30x30 cm CF#



ELITE

30X45 CM

MATT

WALL - KITCHEN CONCEPT



WUDZ



WUDZ HL



WALL - ELEVATION



HARVEST WOOD*



NATURA ELEENZA



TUDOR ELEENZA



VIBRANT BRICK*



VICTORIAN BRICK*

* RANDOM PHASES ARE AVAILABLE







**37.5X25 CM
WALL CONCEPTS**

BASIC

37.5X25 CM

GLOSSY

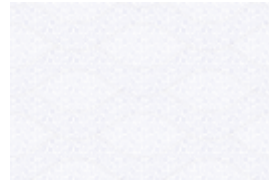
WALL



ATHENA BRIGHT



ATHENA BRIGHT



BALTIC BRIGHT



COSTA BRIGHT



ATHENA FLORA FEATURE



ATHENA FAUNA DECOR*



BALTIC FLORA FEATURE



COSTA FEATURE



ATHENA DEEP



ATHENA FAUNA DECOR*



BALTIC DEEP



COSTA DEEP



ATHENA DEEP

FLOOR



ATHENA - MATT
30X30 cm CF#



ATHENA - MATT
30X30 cm CF#



BALTIC - MATT
30X30 cm CF#



COSTA - MATT
30X30 cm CF#

* RANDOM PHASES ARE AVAILABLE

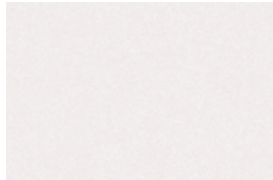


BASIC

37.5X25 CM

GLOSSY

WALL



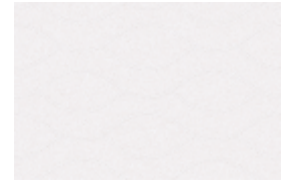
NANCY BRIGHT



NOSTA BRIGHT



ODONSO LT



SEROJA BRIGHT



NANCY FEATURE



NOSTA FLORA FEATURE



ODONSO HL



SEROJA FLORA FEATURE



NANCY DEEP



NOSTA DEEP



ODONSO DK

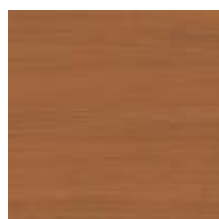


SEROJA DEEP

FLOOR



NANCY - MATT
30X30 cm CF#



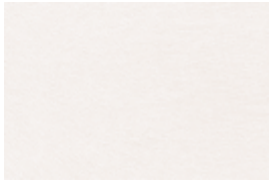
NOSTA - MATT
30X30 cm CF#



ODONSO - MATT
30X30 cm CF#



SEROJA - MATT
30X30 cm CF#



VELENTINO BRIGHT



WAVER LT



VELENTINO FEATURE



WAVER HL



VELENTINO DEEP



WAVER DK



VELENTINO - MATT
30X30 cm CF#



WAVER - MATT
30X30 cm CF#

WALL - KITCHEN CONCEPT



AVAANI MARBO



KENTOR LT



MOSAICO BRIGHT



ZENITH BRIGHT



AVAANI FEATURE 1



KENTOR HL*



MOSAICO FEATURE 1



ZENITH FEATURE*



AVAANI FEATURE 2



KENTOR HL*



MOSAICO FEATURE 2



ZENITH FEATURE*



KENTOR DK



ZENITH DEEP

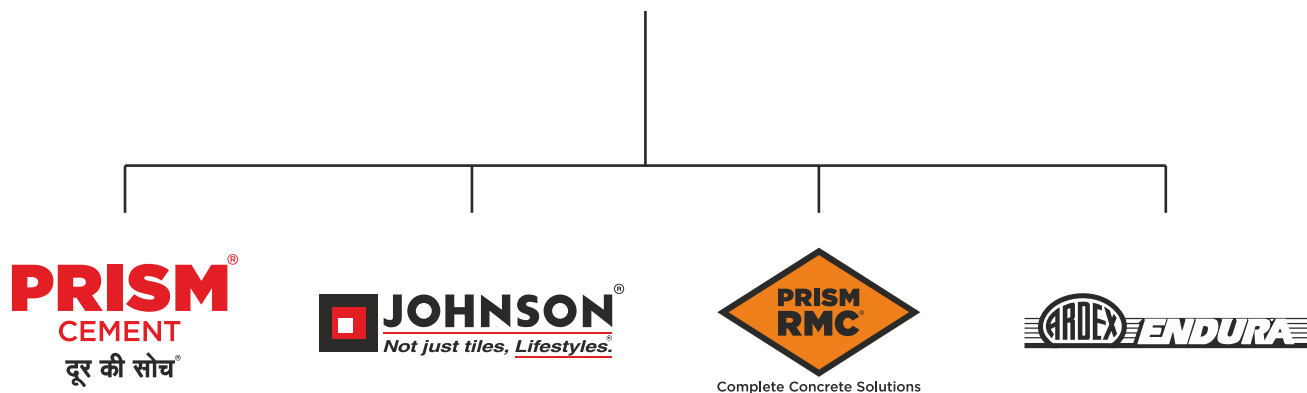
* RANDOM PHASES ARE AVAILABLE



A journey from tiles to lifestyles - measured in square feet

H&R Johnson (India) is a division of Prism Johnson Limited, one of India's foremost Integrated Building Materials conglomerates.

PRISM JOHNSON LIMITED



Established in 1958, Johnson is one of the oldest and trusted brands in the country. Built on the strong and unswerving foundations of quality and innovation, this trust has only grown in these decades gone by; and continues to grow. Starting with tiles, the brand soon diversified into offering lifestyle solutions in the realms of Engineered Marble & Quartz and Bath Solutions. There by becoming India's most Integrated Lifestyle Solutions brand. Every product that comes bearing the H&R Johnson insignia is a symbol of the same quality and innovation focused on adding value to the lives of our consumers.

Pioneering Innovations, A Way of Life

At H&R Johnson the term innovation is at the heart of everything we do. That's why it is backed by credible research. Every product attempts to fill in a void left by conventional offerings in the category, in an innovative manner. It's this value we place on cutting-edge innovation that makes us strive for more and eventually deliver more. A quality and a way of working that has redefine consumer lifestyles and expectations.

- Anti-skid & Water-repellent Tiles for Bathrooms
- Rectified Wall Tiles
- Johnson Marbonite - Vitrified Wall and Floor Tiles
- Joint Free Tiles
- Large Format Slabs
- Digitally Printed Wall & Floor Tiles
- Germ Free Tiles & Sanitaryware
- Exterior & Industrial Flooring Solutions

India's Most Integrated Tile Manufacturing Company



Self-owned Felspar Mines



Making Punches & Dies



Manufacturing of Soluble Salts and Inks

Being India's most trusted tiling brand requires that trust to be maintained in every stage of developing each and every product that bears the name of the brand. That's why at H&R Johnson, our Felspar Mines are Self-owned, the soluble salts and inks are manufactured in-house, and even the dies and punches are made in-house. All, so that every step in the process comes with the same quality and assurance, that you expect from us.



Manufacturing Excellence

Johnson has the most modern manufacturing units across strategic locations in India. Our manufacturing facilities employ the best technology from world leaders in tile manufacturing equipment. All our plants are ISO compliant with both 9001 and 14001 certifications as well as OHSAS 18001 certification.



Certifications



Johnson is India's largest tile manufacturer. It's commitment to quality, service and innovation is backed by certification from the world's leading accreditation bodies.

ISO 9001: 2015

For implementing a Quality Management System for the Manufacture and Supply of Ceramic Tiles.

ISO 45001: 2018

For implementing an Occupational Health & Safety Management System for the Manufacturing of Ceramic Tiles.

ISO 14001: 2015

For implementing an Environmental Management system for the Manufacturing of Ceramic Tiles

Certificate of Merit for Energy Conservation, Bureau of Energy Efficiency, Ministry of Power A Recognition for the efficient use of energy and its conservation.

Plant has received Safety award by National Safety Council

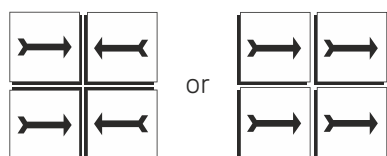
GreenPro is a product certification given by the Confederation of Indian Industry (CII) which signifies environmentally conscious life cycle of the production; certification for eco-friendly products that helps customers make an informed choice towards sustainable products.

Griha

Griha council is a joint initiative of Ministry of New and Renewable Energy, GOI and The Energy and Resources Institute of implement Griha. India's national rating system for sustainable habitats

Johnson Wall Tile Fixing Instructions

1. Plaster the surface to be tiled with a good finish and complete the rendering and curing at least two weeks prior to tiling. **DO NOT FIX TILES ON FRESH SURFACE.**
2. Before fixing the tiles, lay them out in the desired pattern and make sure that they give an acceptable blend of shade, colour and design. Also make sure that the tiles are acceptable to your satisfaction. Please note that certain amount of shade & size variation is inherent in all ceramic products.
3. The company bears no responsibility towards the tiles exposed to outside process like transfers, printing, firing etc.
4. For fixing these tiles, we recommend using an appropriate product from the range of tile fixing adhesives from the ARDEX ENDURA (INDIA) PVT. LTD. Please follow the adhesive manufacturer's recommendations and instructions for best results.
5. For fixing the setiles using sand and cement, follow the instruction given below:
 - a) Use cement and sand mortar in the ratio of 1:3. Add some water to create a consistent paste.
DO NOT USE NEAT CEMENT FOR FIXING TILES.
 - b) Once the mixing has been completed, do not add more water and use the mixture within one hour.
 - c) Soak the tiles in clean water at least 30 minutes before fixing.
 - d) Remove the tiles from the water and allow them to drain to ensure that there is no film of water on the tile surface.
 - e) Apply a 15-20mm layer of bedding material evenly over an area of 1 square meter at a time on the surface of the area. Apply a fine slurry to the back of the tile to ensure proper and full bedding. Press gently for even adherence at the back of the tile. **DO NOT USE AN IRON HAMMER OR SOME HEAVY MATERIAL TO PRESS THE TILE.**
6. Mark and lay out the tiles from the center of the area to be laid so that cut tiles, if any, will be on the outer edges towards walls.
7. The nominal/work size of the tile is as printed on the carton. It is advisable to maintain a gap of 1mm to 2mm between two tiles to allow for possible expansion as per ISO tolerance norms.
8. Wait for 24 hours after fixing the tiles. After this period, fill the joints with cementitious or epoxy grouts from ARDEX ENDURA (INDIA) PVT. LTD.
9. Fifteen minutes after the grouting process, wipe off the excess grout with a damp sponge and polish the tiles with a soft, dry cloth.
10. Please note that wall tiles are specially manufactured for use on the wall only. **DO NOT FIX WALL TILES ON THE FLOOR.**
11. For cleaning tiles, use a moist cloth or sponge with water or diluted soap solution. You can also use tile & stone cleaners from ARDEX ENDURA (INDIA) PVT. LTD. **DO NOT SCRUB OR SCRATCH.**
12. DO NOT USE ACID / ALKALI / SOLVENT / OILS / CLEANING POWDERS ETC. FOR CLEANING TILES.
13. Please note: The company does not accept any liability in case of problems arising out of non-adherence to these tile fixing instructions.
14. **THE COMPANY WILL BEAR NO RESPONSIBILITY AFTER THE TILES ARE FIXED.**



NOTHING IN THESE INSTRUCTION IS A SUBSTITUTE FOR GOOD WORKMANSHIP AND SUPERVISION

TECHNICAL SPECIFICATIONS

S. No	Property	ISO 13006:2018 / EN 14411 Group BIII Requirement	Indian Standard IS 15622:2017 Group B III Requirement	Johnson Wall (Rectified) Value	Test Method
	Dimensions & Surface Quality	whichever is less applicable. Rectified edge	Rectified		
1	Deviation in Length & Width	± 0.3% or ±1.0mm	± 0.2 %	± 0.2 %	ISO 10545-2 / IS 13630-1
2	Deviation in Thickness	± 10% or ±0.5mm	± 5 %	± 5 %	ISO 10545-2 / IS 13630-1
3	Straightness of Sides	± 0.3% or ±0.8mm	± 0.15 %	± 0.15 %	ISO 10545-2 / IS 13630-1
4	Rectangularity	± 0.3% or ±1.5mm	± 0.2 %	± 0.2 %	ISO 10545-2 / IS 13630-1
5	Surface Flatness	± 0.4% or ±1.8mm	± 0.3 %	± 0.3 %	ISO 10545-2 / IS 13630-1
6	Surface Quality	Min 95% free from visible defects	Min 95% free from visible defects	> 95% free from visible defects	ISO 10545-2 / IS 13630-1
	Physical Property				
7	Water Absorption	Average > 10%, when the average exceeds 20%, this should be indicated by manufacturer. Individual min value 9%.	Average > 10%, when the average exceeds 20%, this should be indicated by manufacturer. Individual min value 9%.	E > 10%	ISO 10545-3/ IS 13630-2
8	Modulus of Rupture	12 N/mm ² , Min for Thickness ≥ 7.5mm and 15N/mm ² Min for thickness < 7.5 mm	12 N/mm ² , Min for Thickness ≥ 7.5mm and 15N/mm ² Min for thickness < 7.5 mm	≥ 12 N/mm ² , for Thickness ≥ 7.5 mm and 15 N/mm ² for thickness < 7.5 mm	ISO 10545-4/ IS 13630-6
9	Breaking Strength	200 N, Min for thickness < 7.5 mm, 600 N Min for thickness ≥ 7.5 mm	200 N, Min for thickness < 7.5 mm, 600 N Min for thickness ≥ 7.5 mm	≥ 200 N, Min for thickness < 7.5 mm, ≥ 600 N for thickness ≥ 7.5 mm	ISO 10545-4 / IS 13630-6
10	Moisture expansion	Report value	0.04 mm/m, Max	≤ 0.04 mm/m	ISO 10545-10 / IS 13630-3
11	Scratch hardness of surface (Moh's scale)	Not Required	3, Min	≥ 4	IS 13630 -13
12	Impact Resistance Coefficient of Restitution	Report value	0.55, mm	≥ 0.55	ISO 10545-5 / IS 13630 -14
13	Coefficient of Linear Thermal Expansion	Report value	Max, 9 x 10 ⁻⁶ K ⁻¹	≤ 9 x 10 ⁻⁶ K ⁻¹	ISO 10545-8/ IS 13630-4
14	Thermal Shock Resistance	Report result	10 cycles Min	No Damage	ISO 10545-9 / IS 13630 -5
15	Crazing Resistance of Glazed Tiles	Report result	4 cycles @7.5 bar Min	No Damage	ISO 10545-11/ IS 13630-9
16	Chemical Property (cleansers except to cleansing agents containing Hydrofloric acids and its compounds)				
a	Resistance to Staining - Glazed Tiles	Class 3	Class 1, Min	Class 3, (ISO)/ Class 1 (BIS)	ISO 10545-14 / IS 13630-8
b	Resistance to Household Chemicals and Swimming Pool water cleansers	GB	AA	GA/AA	ISO 10545-13 / IS 13630-8
c	Resistance to acids and alkalis (Glazed Tiles)	Report result	Report result	GA	ISO 10545-13 / IS 13630 -8
17	Color Resistance to UV light	Report result	-	No change in colour	DIN 51094
18	Lead & Cadmium Release- for Glazed Tiles, where required	Report value	-	Nil	ISO 10545-15

* ISO / IS technical specifications for Johnson tiles are applicable only for premium /1st Quality tile
Please inspect all tiles prior to installation, company will not entertaining complaints once tiles are laid/ fixed

PACKAGING DETAILS

Product	Nominal Size (cm)	No of Tiles/Box	Approx Area/Box (sq m)	Approx Weight/Box (kgs)	Approx Cartons/ 20' Container	Approx Area per Container (sq m)
30x60 cm Digital Wall Tiles	30x60	5	0.9	14.00	1928	1735
30x45 cm Digital Wall Tiles	30x45	6	0.81	11.30	2389	1935
37.5x25 cm Digital Wall Tiles	37.5x25	8	0.75	9.30	2903	2177
30x30 cm Floor Tiles	30x30	9	0.81	11.10	2432	1970

YOU CAN ALSO REACH US AT

Region	Branch	Tel.:
East	Kolkata	033-46021880
	Bhubaneshwar	0674 6539836/37/2430240
	Siliguri	9836065812
	Guwahati	8135846661/7575900492
	Ranchi	9576038118
West	Mumbai	022-40647500
	Thane	022-25867600 / 666
	Pune	020-41301164 / 31
	Aurangabad	8669600748
	Ahmedabad	079-48480010
	Raipur	0771-4919129
	Indore	0731-4007441
North	Jalandhar	0182-4505038 / 39
	Chandigarh	0172-4697100
	Delhi	011-49526600

Region	Branch	Tel.:
North	Jaipur	0141-2368329
	Lucknow	0522-2721699
	Varanasi	0542-2222620
	Patna	9576038781
South	Bengalure	080-22234310/080-22234330
	Hyderabad	040-29802270 / 71 / 72
	Vijayawada	9666429666
	Vishakhapatnam	0891-2796376
	Tirupati	9121228960
	Kochi	0484-4871277
	Kozhikode	0422-4382698
	Thiruvananthapuram	0471-2720141
	Chennai	044-28544116 / 28541881
	Coimbatore	0422-4382698
	Madurai	0452-4355584 / 4355594
	Trichy	9486718544

EXPERIENCE CENTERS

Location	Address	Tel.:
Kolkatta	HOUSE OF JOHNSON - 83 JBS Haldane Avenue, TOPSIA Trinity towers Kolkata - 700046	033-46021880
Guwahati	HOUSE OF JOHNSON - 1st Floor, Above Royal Riders Honda, Near Rahul Kata, Pub Bragaon, Garchuk, Guwahati - 781035	7575900492
Bhubaneshwar	HOUSE OF JOHNSON - Ray Tower, 1st Floor, N4/237, Indradhanu market, IRC Village, Nayapalli, Bhubaneshwar, Orissa - 751015	0674 6539836/37/2430240
Patna	HOUSE OF JOHNSON - SK Builders and colonizer Pvt.Ltd.,1st Floor, SK Palace, Saguna more, Bihar - 801503.	9702651243
Chandigarh	HOUSE OF JOHNSON - SCO 214, sector14, Panchkula, Haryana - 134109	0172-4637724
Delhi	HOUSE OF JOHNSON - First & Mezzanine Floor, B-1/G-3, Mohan Industrial Estate, Mathura Road, New Delhi - 110094.	11-49526600
Lucknow	HOUSE OF JOHNSON - 1st Floor, Prithvi Ratan Height,Plot No CP-4, Vijayant khand - 3, Gominagar Yojna, Lucknow - 226028	0522-2721699
Varanasi	HOUSE OF JOHNSON - Ashakunj, 1st floor, D59/103 D4, Opp Siddharth Complex, Sigra Mehmoorganj Road, Varanasi - 221010	0542-2222620
Aurangabad	House Of Johnson Aurangabad - Gut No 16/44, NH-211, Near Balapur Phata, Near Ramkisan Lawns, Beed Bypass Road Aurangabad 431005	8669600748
Pune	HOUSE OF JOHNSON - Sable House, Poona Snuff Factory, Sr. No 11A, Plot 408/4/5, Satara Road, Gultekadi, Pune - 411037	7350009364
Thane	HOUSE OF JOHNSON - Shop No.5, Gr.Floor, Cosmos Jewels, Near Dmart, Anand Nagar, Ghodbunder Road, Thane West - 400615	8424003247
Mumbai - Andheri	HOUSE OF JOHNSON - 1st flr, Bonanza, Sahar Plaza, Nr Hotel Kohinoor continental, J B Nagar, Andheri Kurla Road, Andheri East, Mumbai - 400059	8108030975
Ahmedabad	HOUSE OF JOHNSON - F 106-107, Shivalik Plaza, IIM Road, Panjrapole Cross Road, Ahmedabad, Gujarat - 380015	079-48480010
Indore	HOUSE OF JOHNSON - Shop No 5, 6, 7 and 8, Upper Ground Floor, Exotica, Shalimar Township, Village Niranjapur, A. B. Road, Indore, Madhya Pradesh - 452001	0731-4007441
Raipur	HOUSE OF JOHNSON - 2nd Floor, MM Silver Plaza, Opp Udyog Bhawan, Ring Road - 1, Raipur, Chattisgarh - 492001	771-4919129
Coimbatore	HOUSE OF JOHNSON - Elysium Towers, Park Gate Rd, No. 21, ATT Colony, Gopalapuram, Coimbatore - 641018	0422-4382698
Chennai	HOUSE OF JOHNSON - 82, 84 & 86 Bascon Maeru, 1st floor, Kodambakkam High Road, Nungambakkam, Chennai - 600034	044-48611632
Kochi	HOUSE OF JOHNSON - Door no. 11/300 f, Next to VTJ Hyundai, NH 47 Kundanoor, Maradu, Kochi, Ernakulam - 682304	0484-4871277
Kozhikode	HOUSE OF JOHNSON - Tilal Tower, Near Nexa Showroom, Kudilthod, Malaparamba bypass, Kozikode, Kerala - 673017	0495-2357505
Thiruvananthapuram	HOUSE OF JOHNSON -1st Floor, Sreedhanya Apex, TC 22/3720 (4) Vellayambalam, Sasthamangalam PO, Thiruvananthapuram, Kerala - 695010	0471-2720141
Bengalure	HOUSE OF JOHNSON - No.39, Rajaram Mohan Roy Road , Opp. Kanteerava indoor Stadium, Bengalure - 560027	080-22234310/080-22234330
Bengalure	HOUSE OF JOHNSON - Dodda Banaswadi, Opp. New Baldwin Residential School, Bengalure-560043	080-41692976 / 41692060
Hyderabad	HOUSE OF JOHNSON - SP Jubilee Crown (3rd Floor) Plot - 1270, Road No.36, Jubilee Hills, Hyderabad - 500033	8897525143

For address and contact numbers of our Johnson Exclusive Showrooms and Authorized Retailers, please visit our website www.hrjindia.com



Toll Free No.: 1800-210-7484

WhatsApp No.: +91 84510 57484

Email: tiles.customercare@prismjohnson.in

For Export Enquires, Email:

exports.customercare@prismjohnson.in

PRISM JOHNSON LIMITED

H & R JOHNSON (INDIA) DIVISION

Corporate Office:

7th Floor, Windsor, C. S. T. Road, Kalina,
Santacruz (East), Mumbai - 400 098, India.

Tel: +91-22-40647300

Website: www.hrjohnsonindia.com

Registered Office: 305, Laxmi Niwas Apartments, Ameerpet
Hyderabad - 500016, Telangana, India.

Download App



Download E-Catalogue



HRJIndia



@hrjohnsonofficial



Hrjohnsonindia



hrjohnson_india



h-&-r-johnson-india-prism-johnson-limited



HRJohnsonIndia1