

# NITCO

TILES MARBLE MOSAICO



## VITRIFIED

POLISHED VITRIFIED TILES



## NITCO BRAND ETHOS

We believe that to be at the top one has to keep innovating and pushing oneself, constantly. Be it bringing to you the best of designs or even being ahead of the race when it comes to technology. There is only one spot on the top and we aspire for that spot to be ours.

### EXPERT COMPETENCE:

We are driven by our urge to constantly evolve, based on our experience and learnings that make us competent enough to shape our own future with an entrepreneurial spirit. This fortitude of ours reflects in our solid leadership, our sound know-how and a high degree of credibility in our strong distributor network.

### CLASS APART PRODUCT QUALITY:

Quality for us is:

- A clear point of difference- perceived and value added
- Timeless and characteristic designs
- Outstanding performance

With an eye for beauty and a continuous quest for perfection, we ensure that only those tiles, which match our highest standards, are given the NITCO brand label.

Our in-vogue designs and advanced technological processes derive from the very birthplace of ceramic tile making; Italy and Spain.

What sets us apart is that we have always invested in the best available technology and machinery. Our high-tech NITCO plant has enabled us to become India's first tile company to offer international standards in the manufacturing of tiles.

### INNOVATION:

Innovation and continuous improvement in our technology and products, is one of our major distinguishing factors. For us, our work is an art form and each tile produced by NITCO is a unique masterpiece. And this is why our customers trust us to understand their needs and preferences with products that are second to none.

### OUR SOCIAL RESPONSIBILITY:

Nature gives us in plenty and it is our responsibility to give back with gratitude. And the same goes for even our commitment towards people, be it our employees or our customers. Hence we are always on the search for environmental-friendly and pollution-free manufacturing processes and materials to contribute to the planet-preservation.

We have proof that we are getting closer by the day to anticipating future trends and impacts to accomplish our obligations and guarantee sustainability.

Our Tile Plant has been certified for Integrated Management System:

- ISO 9001:2008 – For Quality Management
- ISO 14001:2004 – For Environment Management
- OHSAS 18001:2007 – For Occupational Health and Safety Management
- ISO 9001:2008 – For Quality Management (Corporate Office)

### CUSTOMER SERVICE

Our effectively enhanced customer services include:

- Ensuring updated information on website and digital media
- Educating the dealers as well as masons on the brand and product usage to facilitate proper information passing to the customers
- Easy availability of all products at Le Studio and other outlets
- Effective handling of post sales enquiries and customer grievances
- Timely product delivery at the dealers' doorstep without any kind of wear and tear



## THE WORLD OF NITCO

It all started with a belief, and a purpose - a belief that there's no such feat which cannot be achieved, and a purpose to deliver the world's best products and services. 6 decades later, we're one of the largest, and the only premium tile brand in India. And we're only getting started.

NITCO is the only company in the country to boast a state-of-the-art, fully-integrated, automated plant, with benchmark processing systems and the most advanced technology. We are also the only company with an automated sorting process. This ensures quality consistency with the least variations. Our plant houses the country's most advanced Lab, with skilled technicians, professionals and experts from across the globe, ensuring quality and standards par excellence.

But most importantly, our processes, systems and technology also offer one more extended feature – peace of mind. In an industry where minor defects and imperfections are a norm, we strive to offer quite the opposite. With NITCO you are assured minimum risk, and the best quality, at all times. A definitive proof of that comes in the goodwill we've created amidst the Architect and Dealer fraternity across India.

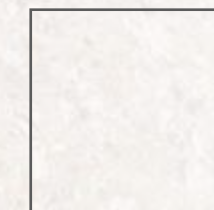
# INDEX

## VITRIFIED TILES



600 x 1200 mm | DCH

Eterno Black, Eterno Crema	
Eterno White	08-09
Hercules Crema, Hercules White	10-11
Vintage Crema, Vintage White	12-13



800 x 800 mm | DCH

Tropicana White	14-15
Tropicana Gold	14-15
Vintage Pearl	16-17



600 x 600 mm | DCH

Supreme White	22-23
Amazone Beige	24-25
Amazone Cherry	24-25
Amazone Ice	24-25
Vintage Pearl	26-27
Tropicana	28-29
Magnum Coral	30-31
Endurance Gris	32-33
Endurance Nero	32-33
Tropicana Frost	34-35
Tropicana Caramel	34-35
Tropicana Smoke	34-35
Tropicana Almond	34-35
Tropicana Rose	34-35

600 x 600 mm | SST

Brillo Ivory Silver	38-39
Francesca Silver	38-39
Harvest Cream Silver	38-39
Serpegenti Silver	38-39
Bibilos Silver	38-39



**600x**  
**1200mm**  
*double charge vitrified tiles*

*Introducing revolutionary  
extra-large tiles.  
Experience the opulent look  
and feel of marble,  
amazing durability and  
exceptional finish.*



JOINT FREE



HIGHLY DURABLE



STAIN RESISTANT



ETERNO | 600 x 1200 mm



Eterno White



Eterno Crema



Eterno Black

HERCULES | 600 x 1200 mm



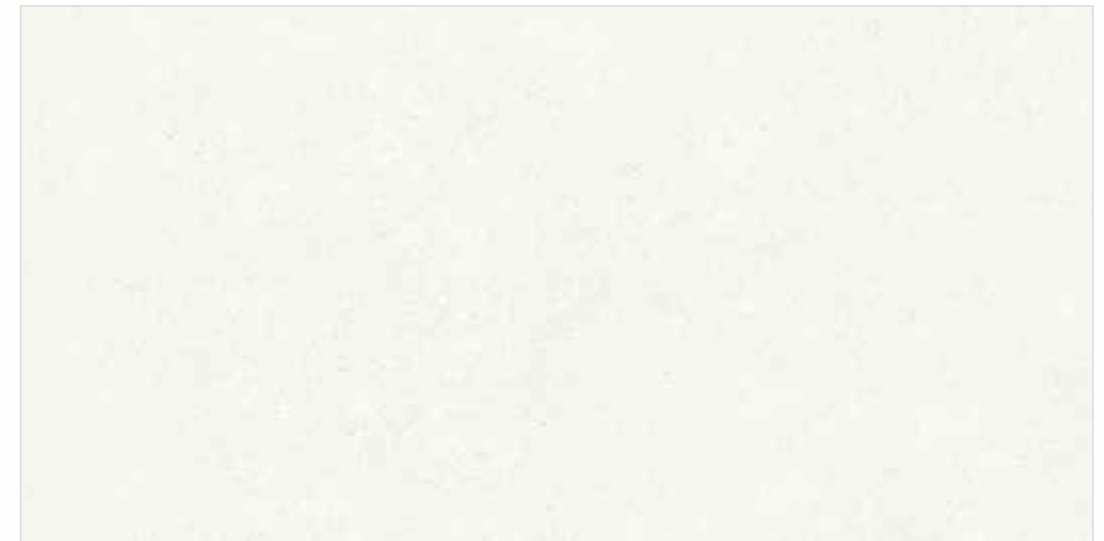
Hercules White



Hercules Crema



VINTAGE | 600 x 1200 mm



Vintage White



Vintage Crema



THE MAGIC OF  
NATURAL MARBLE  
NOW IN TILES

**800x**  
**800mm**  
*double charge vitrified tiles*

*the next revolution in tiles  
adorn your space with grandeur,  
finesse & lifelong durability*







Tropicana White



Tropicana Gold



VINTAGE | 800 x 800 mm



Vintage Pearl



THE  
MAGIC  
OF  
NATURAL  
MARBLE  
NOW  
IN  
TILES

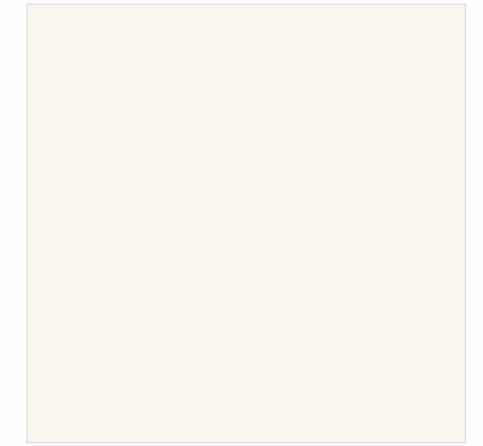
**600x  
600mm**  
*double charge vitrified tiles*

*the next revolution in tiles  
adorn your space with grandeur,  
finesse & lifelong durability*





SUPREME | 600 x 600 mm



Supreme White





Amazone Beige



Amazone Cherry



Amazone Ice

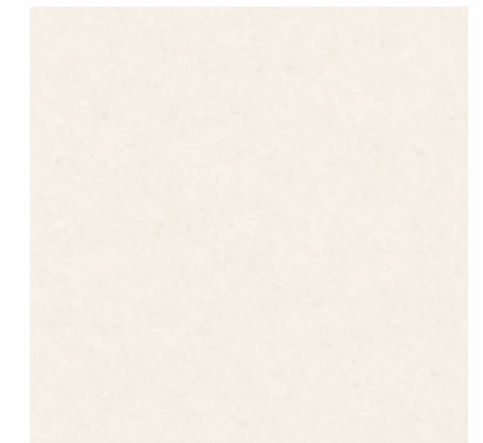


VINTAGE | 600 x 600 mm



Vintage Pearl





Tropicana





Magnum Coral





Endurance Gris



Endurance Nero



TROPICANA | 600 x 600 mm



Tropicana Almond



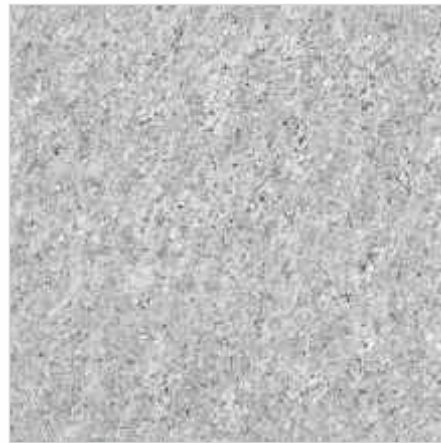
Tropicana Frost



Tropicana Rose



Tropicana Caramel



Tropicana Smoke





# SOLUBLE SALT

**600x  
600mm**

*wide array of colors,  
A perfect sizes for your floor  
and beautiful designs.*



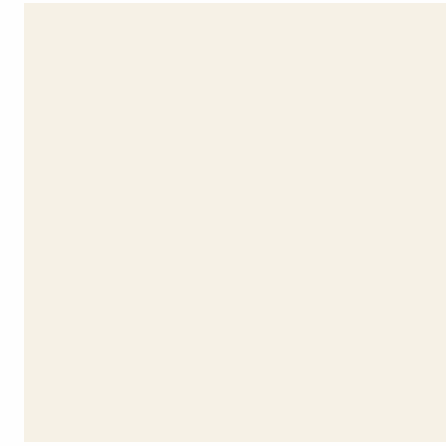
JOINT FREE



STAIN RESISTANT



SST | 600 x 600 mm



Brillo Ivory Silver



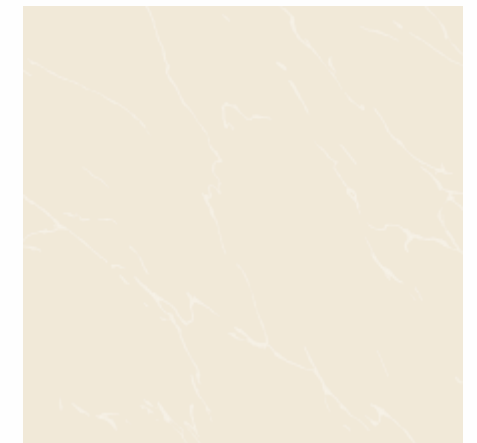
Francesca Silver



Harvest Cream Silver



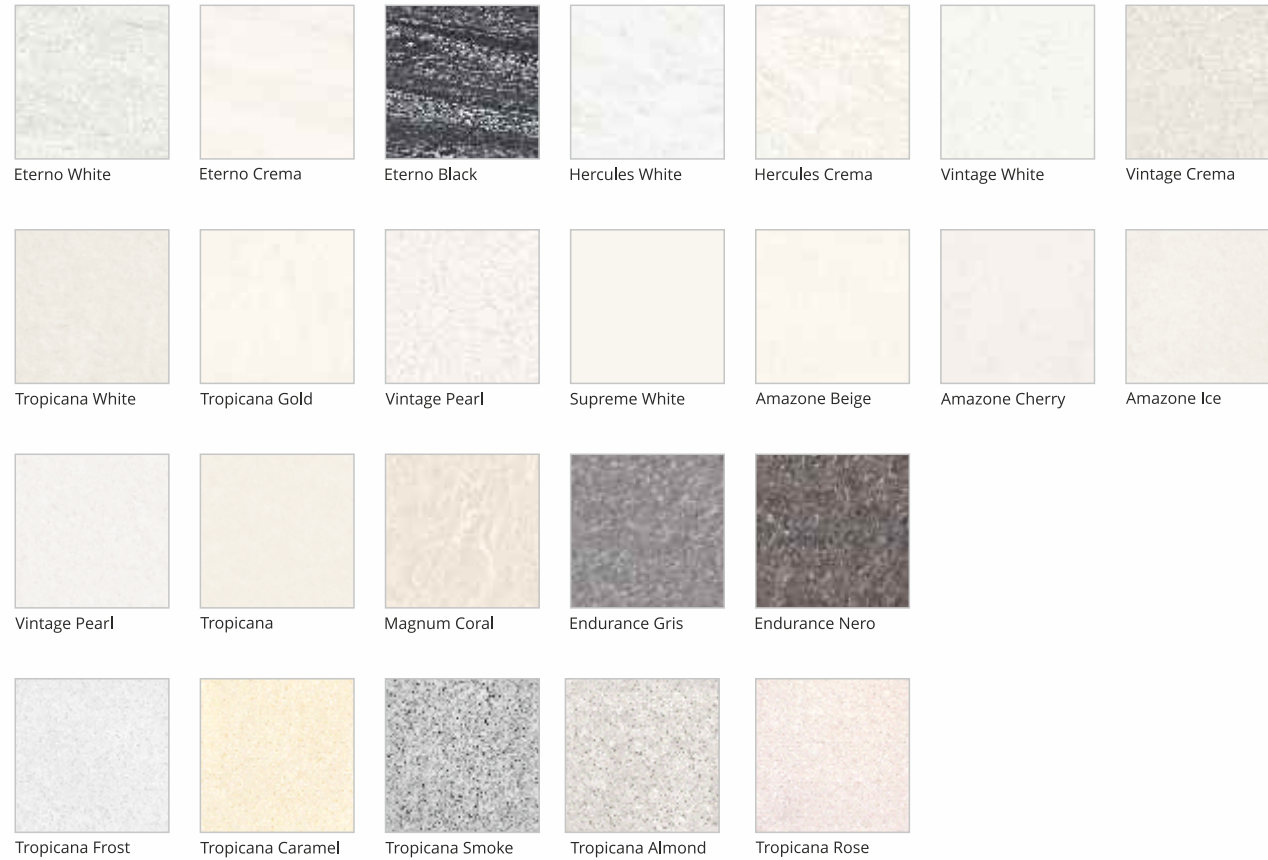
Serpeganti Silver



Bibilos Silver



## DOUBLE CHARGE | Image Gallery



## SOLUBLE SALT | Image Gallery



## TECHNICAL SPECIFICATION OF VITRIFIED TILES (DOUBLE CHARGE)

Sr. No.	PROPERTIES	CEN CODE	ISO CODE ISO13006:2012E	Requirement for Vitrified tiles as per B1a Group	NITCO VALUE
01	Deviation in Length %	EN 98	ISO:10545-2	± 0.6% (Max ± 2.0 mm)	± 0.1%
02	Deviation in Thickness %	EN 98	ISO:10545-2	± 5.0% (Max ± 0.5 mm)	± 4.0%
03	Straightness of Edge %	EN 98	ISO:10545-2	± 0.5% (Max ± 1.5 mm)	± 0.15%
04	Diagonal Variation % (Rectangularity)	EN 98	ISO:10545-2	± 0.5% (Max ± 2.0 mm)	± 0.15%
05	Surface Flatness %	EN 98	ISO:10545-2	± 0.5% (Max ± 2.0 mm)	±0.15% for 800x1200mm ±0.20% for others
06	Surface Quality	EN 98	ISO:10545-2	Min 95% free from any visible defects	Min 95% free from any visible defects
07	Water Absorption % By WT.	EN 99	ISO:10545-3	< 0.5	< 0.08
08	Modulus of Rupture in N / mm <sup>2</sup>	EN 100	ISO:10545-4	> 30	> 40
09	Thermal Shock Resistance	EN 104	ISO:10545-9	No Visible Defects	Resistant
10	Frost Resistance		ISO:10545-12	No Visible Defects	Resistant
11	Chemical Resistance (Except HF Acid)	EN 106	ISO:10545-13	No Visible Effect	No Visible Effect
12	Resistance To Stain		ISO:10545-14	Manufacture To State Class	Resistant
13	MOH Scratch Hardness	EN 101		MIN 6	≥ 6
14	Gloss Value			MIN 75	> 80
15	Deep Abrasion		ISO:10545-6	MAX 175 CUBIC MM	MAX 175 CUBIC MM

## TECHNICAL SPECIFICATION OF VITRIFIED TILES (SOLUBLE SALT)

Sr. No.	PROPERTIES	CEN CODE	ISO CODE ISO13006:2012E	Requirement for Vitrified tiles as per B1a Group	NITCO VALUE
01	Deviation in Length %	EN 98	ISO:10545-2	± 0.6% (Max ± 2.0 mm)	± 0.1%
02	Deviation in Thickness %	EN 98	ISO:10545-2	± 5.0% (Max ± 0.5 mm)	± 4.0%
03	Straightness of Edge %	EN 98	ISO:10545-2	± 0.5% (Max ± 1.5 mm)	± 0.15%
04	Diagonal Variation %(Rectangularity)	EN 98	ISO:10545-2	± 0.5% (Max ± 2.0 mm)	± 0.15%
05	Surface Flatness %	EN 98	ISO:10545-2	± 0.5% (Max ± 2.0 mm)	± 0.2%
06	Surface Quality	EN 98	ISO:10545-2	Min 95% free from any visible defects	Min 95% free from any visible defects
07	Water Absorption % By WT.	EN 99	ISO:10545-3	< 0.5	< 0.08
08	Modulus of Rupture in N / mm <sup>2</sup>	EN 100	ISO:10545-4	> 35	> 40
09	Thermal Shock Resistance	EN 104	ISO:10545-9	No Visible Defects	Resistant
10	Frost Resistance		ISO:10545-12	No Visible Defects	Resistant
11	Chemical Resistance (Except HF Acid)	EN 106	ISO:10545-13	No Visible Effect	No Visible Effect
12	Resistance To Stain		ISO:10545-14	Test Method Available	Class 3
13	Deep Abrasion		ISO:10545-6	MAX 175 CUBIC MM	MAX 175 CUBIC MM
14	Gloss Value			MIN 75	> 80

## Packing Details of Vitrified Tiles

Sr. No.	Dimensions	Tiles / Box	Coverage Area	
			Sq. Mts.	Sq. Feet
1	600 mm x 1200 mm (24" x 48")	2	1.44	15.5
2	800 mm x 800 mm (32" x 32")	3	1.92	20.67
3	600 mm x 600 mm (24" x 24")	4	1.44	15.50

The reproduction of tiles in this catalogue is restricted to four colour printing only and tiles are not relative in sizes. Conforming to ISO requirements, technical specifications of NITCO tiles are applicable only for first grade / first quality wall tiles. Please inspect all tiles prior to installation. Company will not entertain complaints once tiles are laid / fixed. Price category & PEI grade may change without any notice. Customers are advised to confirm it before placing order.



**NITCO LIMITED**

Nitco House, Sheth Govindram Jolly Marg,  
Kanjur Marg (E), Mumbai - 400042.

Tel.: +91-22-67521555 | Fax: +91-22-67521500.

To Locate the nearest Exclusive Le Studio in your city,  
Please call Toll free:1800 209 9898 | [marketing@nitco.in](mailto:marketing@nitco.in)



[www.nitco.in](http://www.nitco.in)