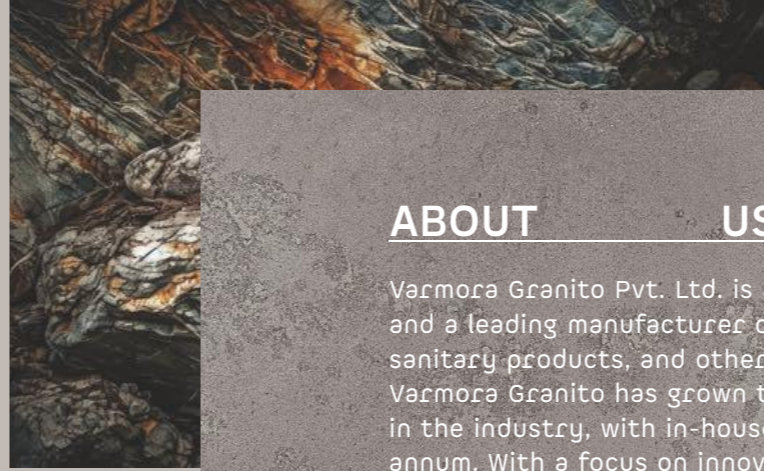




DISCOVER A WORLD
OF POSSIBILITIES

new
style

40x
120cm



ABOUT US

Varmora Granito Pvt. Ltd. is a flagship company of the Varmora Group and a leading manufacturer of high-quality ceramic tiles, bath and sanitary products, and other building materials. Established in 1994, Varmora Granito has grown to become one of the largest manufacturers in the industry, with in-house production capacity of 35 MSM per annum. With a focus on innovation, sustainability, and customer satisfaction, Varmora Granito is committed to providing its customers with the best products and services worldwide. Varmora now boasts 317 exclusive brand outlets (EBOs) and 2,000+ multi-brand outlets (MBOs) in their network. Whether you're looking for stylish tiles, durable bath and sanitary products, or other building materials, Varmora Granito has you covered.

To know more about Varmora Granito visit www.varmora.com





ABOUT THE TECHNOLOGY

Discover the remarkable combination of traditional craftsmanship with the latest technology. We at Varmora strive for advancement in the ceramic world by infusing modern techniques and technology to craft impeccable and unique textures, designs, and layouts. The meticulously crafted tiles undergo a superior transition with the help of technology, showcasing versatile effects. Above all, vivid techniques are opted that add high aesthetic value to the tiles and through advanced machinery, the tiles are molded and given a definite shape to blend with the decor style of spaces seamlessly.

FORMAT

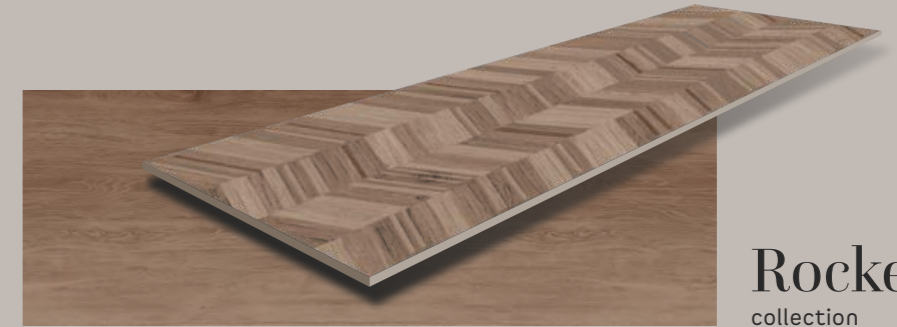
UNFOLD
DISTINCT
FORMAT
WITH
DISTINCT
FEATURES



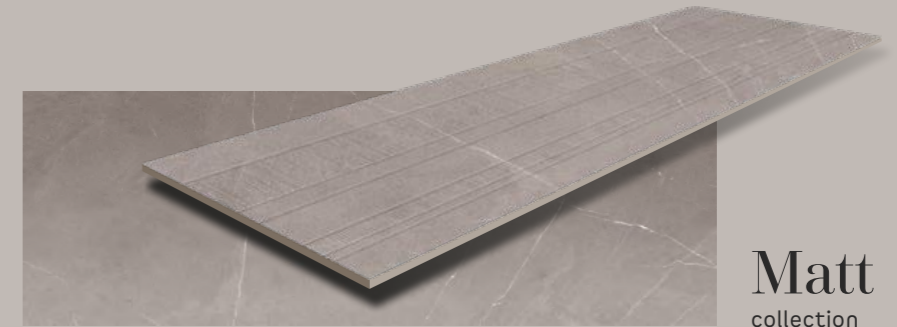
40x
120cm
9mm THICKNESS

Exceptional tiles
with extravagance
make a bold
statement in
versatile spaces.

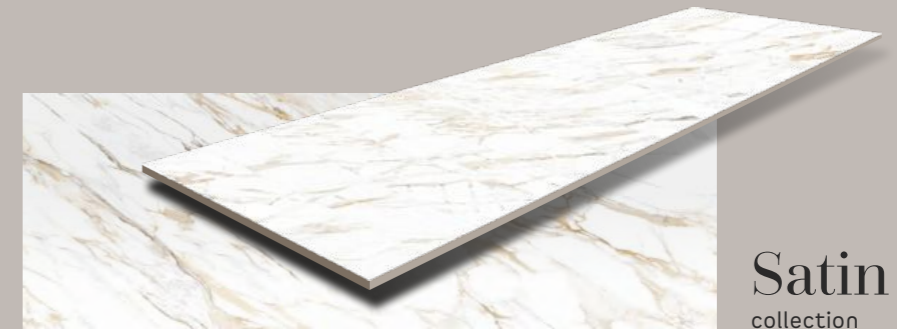
INDEX



Rocker
collection



Matt
collection



Satin
collection

DISCOVER CUTTING-EDGE
COLLECTIONS THAT INSPIRES

TECHNICAL FEATURES

Discover infinite possibilities with class-apact features of vitrified tiles, blending effortlessly with the decor style of versatile spaces.



EASY CLEANING AND CARE



THERMAL SHOCK RESISTANCE



HEAT-RESISTANT



RESISTANCE TO STAINS



LIGHT-FAST COLOURS



RESISTANCE TO HOUSEHOLD CHEMICALS



SCRATCH RESISTANCE



DOES NOT ABSORB LIQUIDS



IMPACT RESISTANCE



ANTI-SKID



DIGITAL PRINTING



ECO FRIENDLY



ZERO MAINTENANCE



ABRASION RESISTANCE



RANDOM

NOTABLE FEATURES



HIGH DEPTH PUNCH

Add deftness to your space with high depth excellence through noteworthy punch style.



SUITABLE FOR OUTDOOR AREA

Elevate your outdoors with the extraordinary tile format with sleek and modern look.



MINIMAL & CLEAN DESIGNS

Streamline your space with minimally aesthetic and uncluttered designs of tiles.



**BEAUTY
OF
TEXTURE**

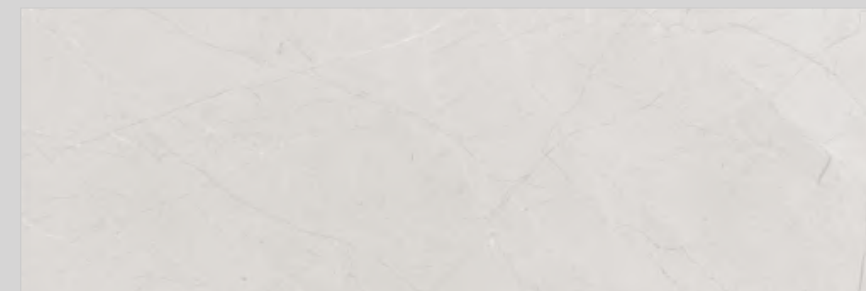
Rocker

collection

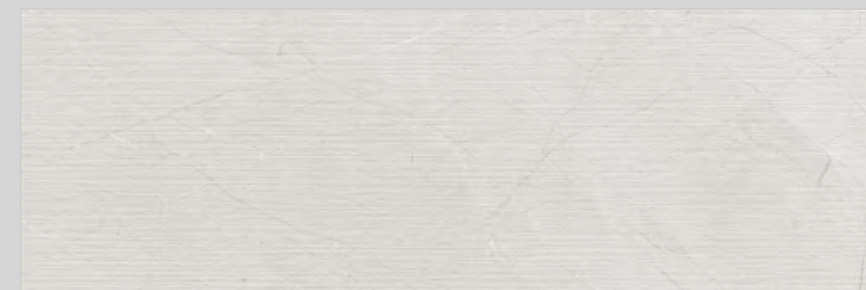
Crafted with meticulous artistry, the Rocker Collection by Varmora is a masterpiece. The tiles are revered for their unmatched aesthetics, rare textures and dazzling allure that complement every corner of spaces.



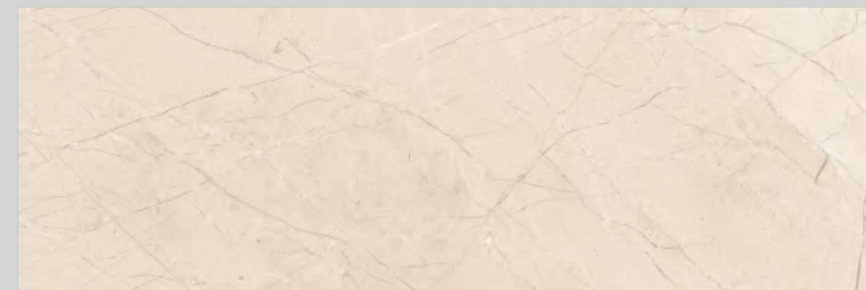
ROCKER COLLECTION



AMANTE GREY



STRIPO AMANTE GREY



AMANTE IVORY



STRIPO AMANTE IVORY

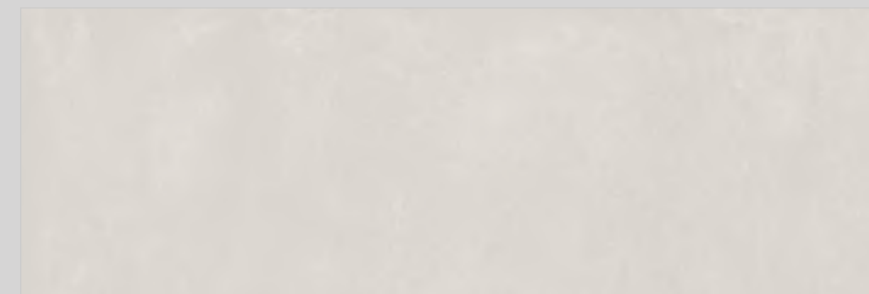
ROCKER COLLECTION

* Touch the **QR** to unlock 360° view.

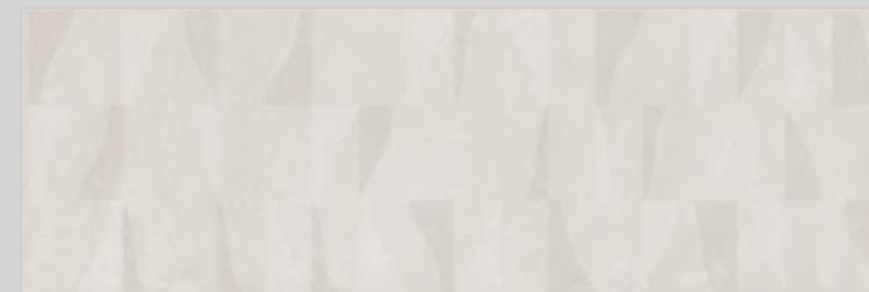


www.varmora.com

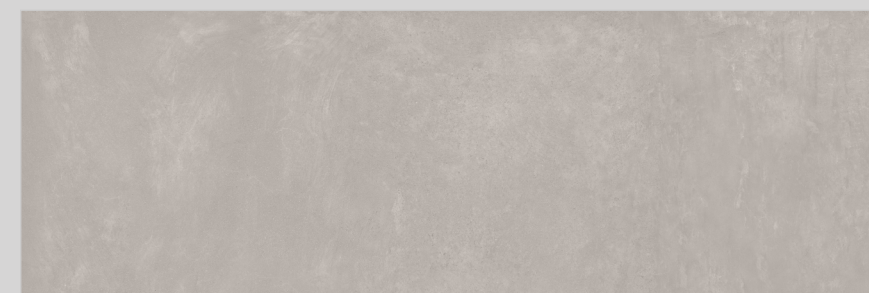
ROCKER COLLECTION



COSMA BIANCO



SWELL COSMA BIANCO



COSMA CEMENTO

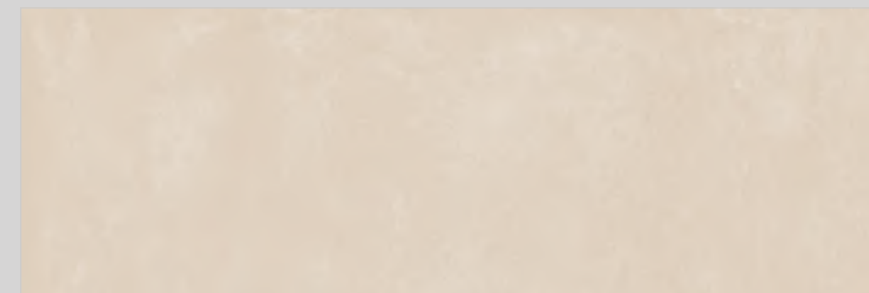


SWELL COSMA CEMENTO

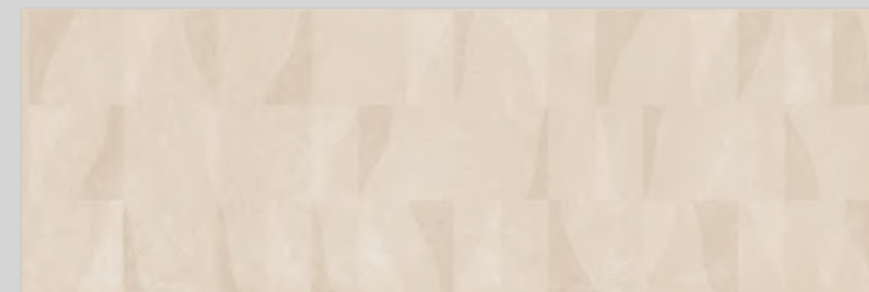
* Touch the **QR** to unlock 360° view.



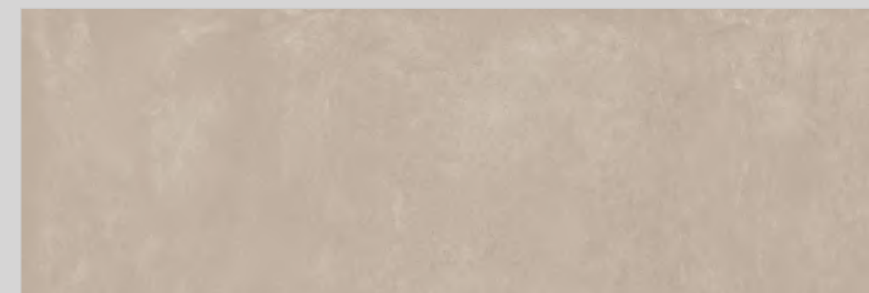
ROCKER COLLECTION



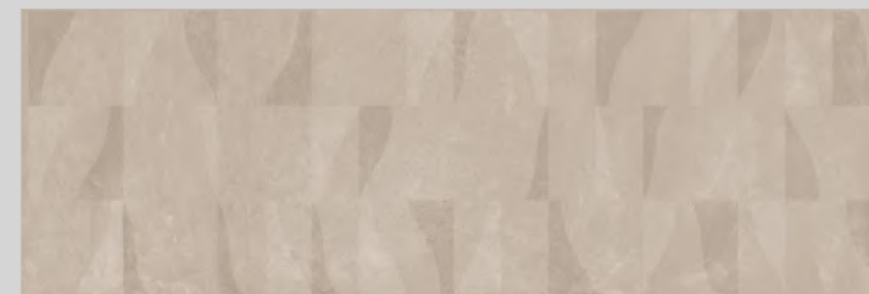
COSMA IVORY



SWELL COSMA IVORY



COSMA NATURAL

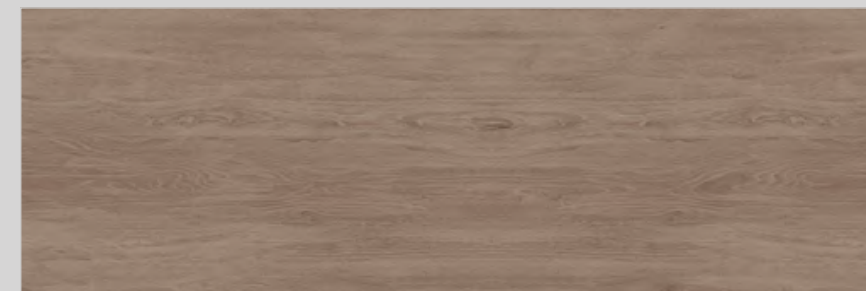


SWELL COSMA NATURAL

* Touch the QR to unlock 360° view.



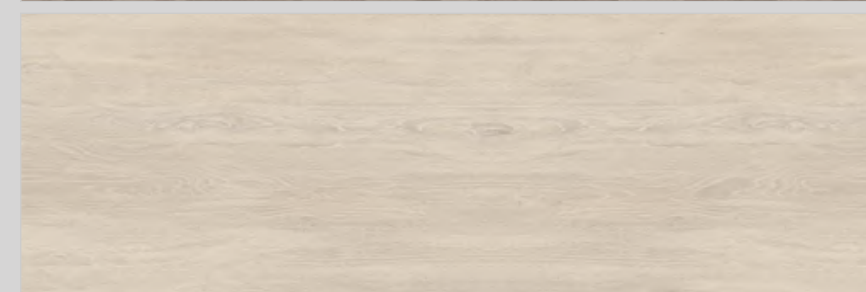
ROCKER COLLECTION



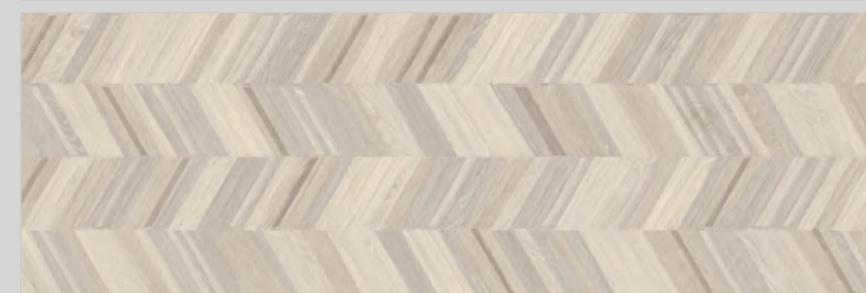
OAK WOOD BROWN



GROOVER OAK WOOD BROWN

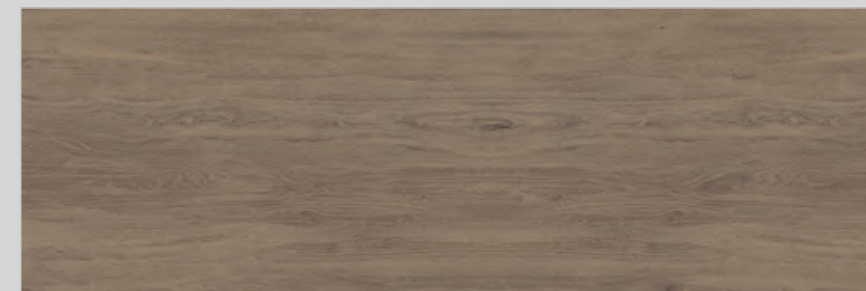


OAK WOOD IVORY



GROOVER OAK WOOD IVORY

* Touch the QR to unlock 360° view.



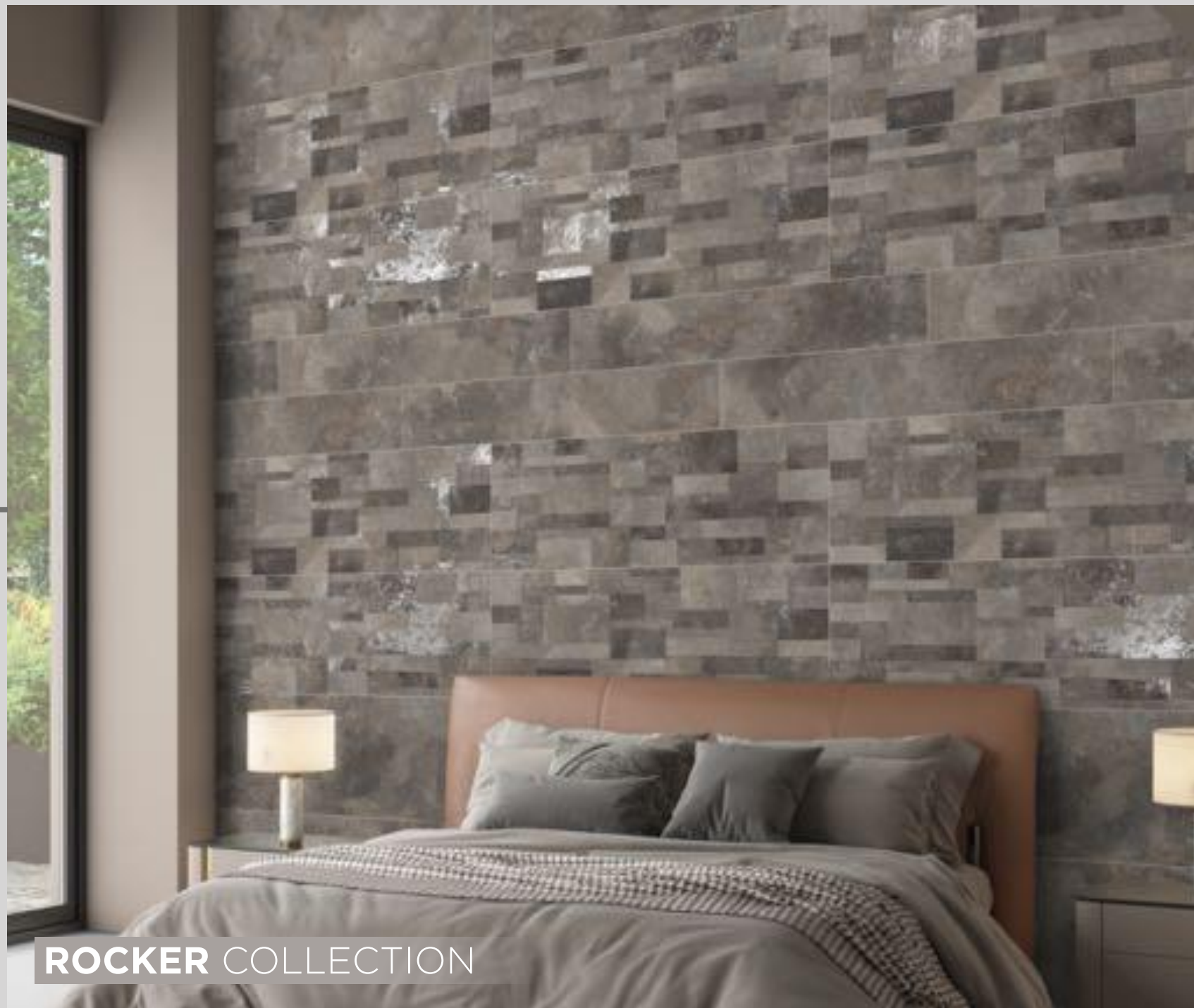
OAK WOOD NATURAL



GROOVER OAK WOOD NATURAL

ROCKER COLLECTION

* Touch the **QR** to unlock 360° view.



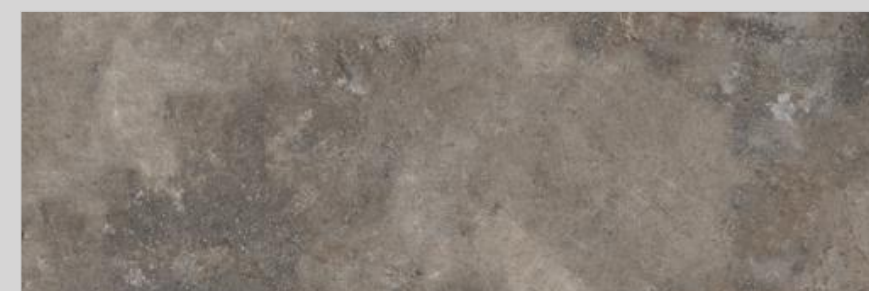
ROCKER COLLECTION



OXIDO CEMENTO



ORIENT OXIDO CEMENTO



OXIDO DOVE

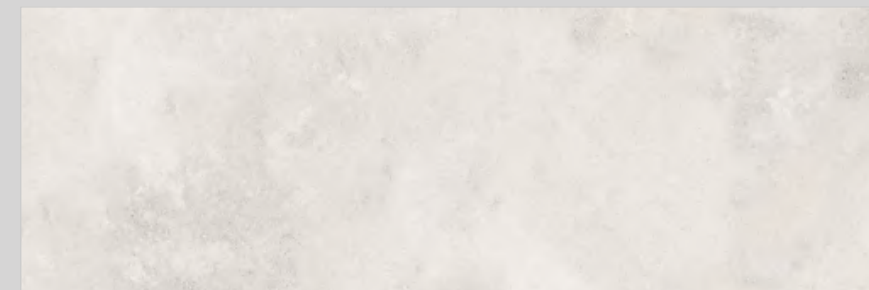


ORIENT OXIDO DOVE

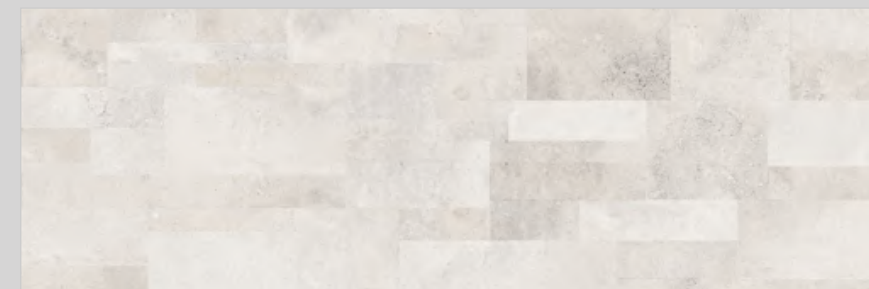
* Touch the QR to unlock 360° view.



ROCKER COLLECTION



OXIDO PEARL



ORIENT OXIDO PEARL



OXIDO RUSTY



ORIENT OXIDO RUSTY

* Touch the **QR** to unlock 360° view.



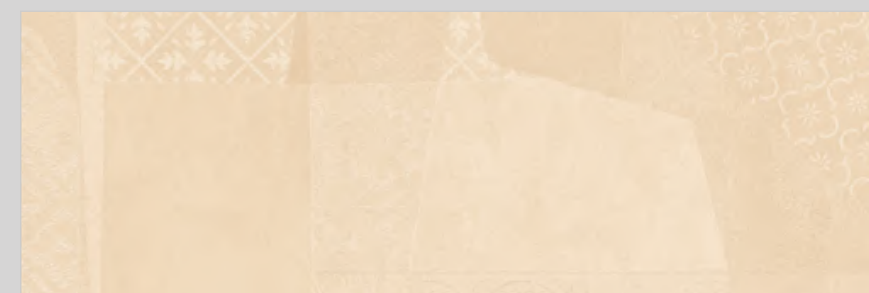
ROCKER COLLECTION



REGAL COPPER



REGAL GREY



REGAL IVORY



REGAL TAUPE

* Touch the **QR** to unlock 360° view.



**DEPTH
OF
INTENSITY**

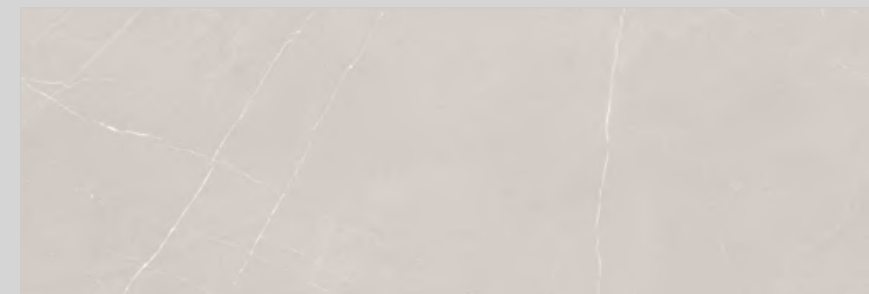
Matt

collection

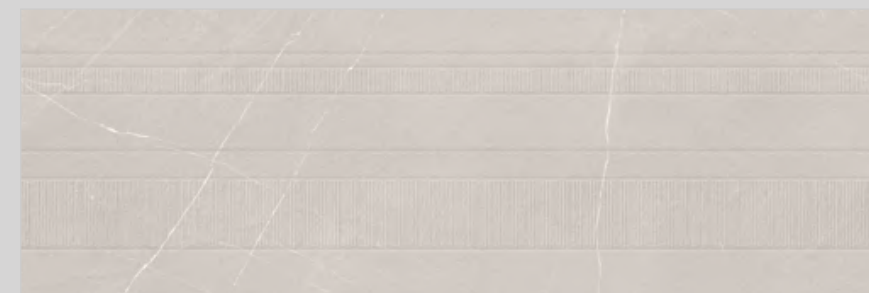
Elevate your space with the tiles from the Matt Collection by Varmora, known for their exceptional properties and understated beauty that lasts. The surfaces have a touch of contemporary elegance and extravagant style.



MATT COLLECTION



ARENA BIANCO



GARNET ARENA BIANCO

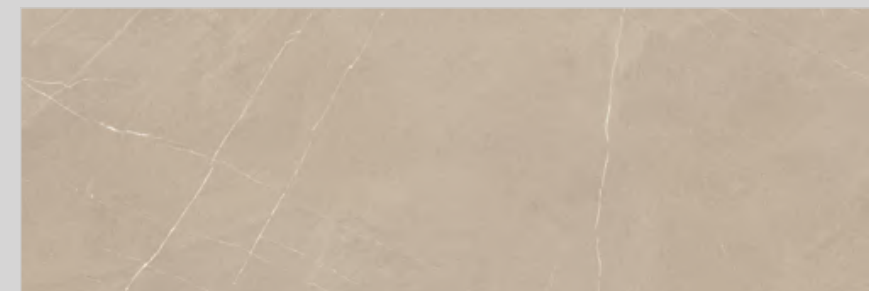


ARENA GREY



GARNET ARENA GREY

* Touch the **QR** to unlock 360° view.



ARENA NATURAL



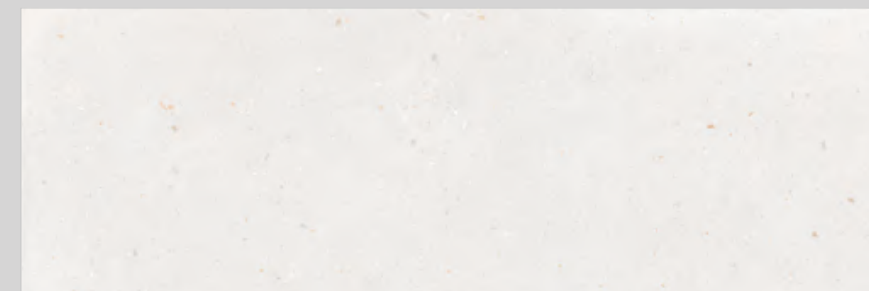
GARNET ARENA NATURAL

MATT COLLECTION

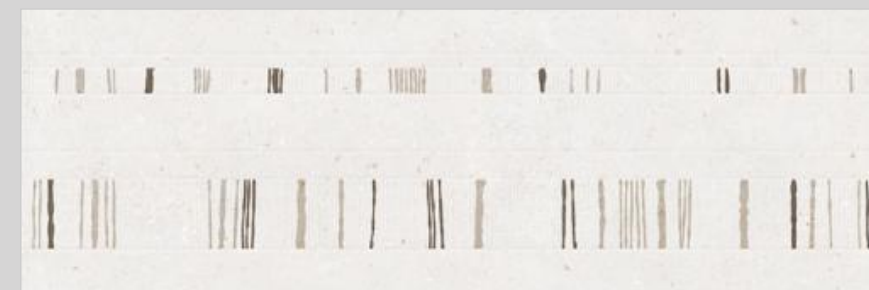
* Touch the **QR** to unlock 360° view.



MATT COLLECTION



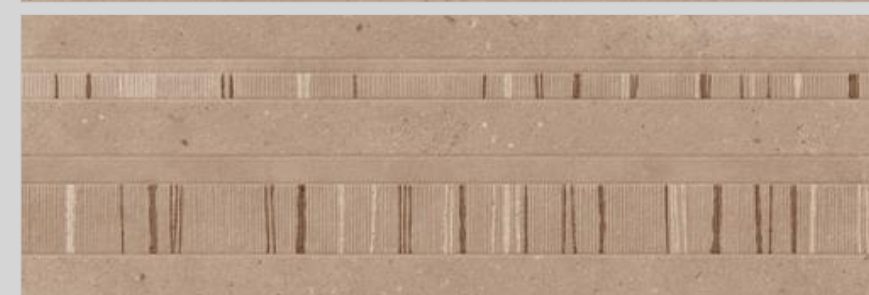
ELITE BIANCO



GARNET ELITE BIANCO



ELITE BROWN

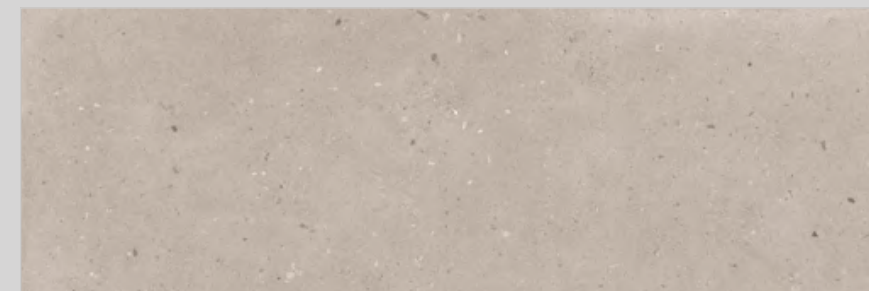


GARNET ELITE BROWN

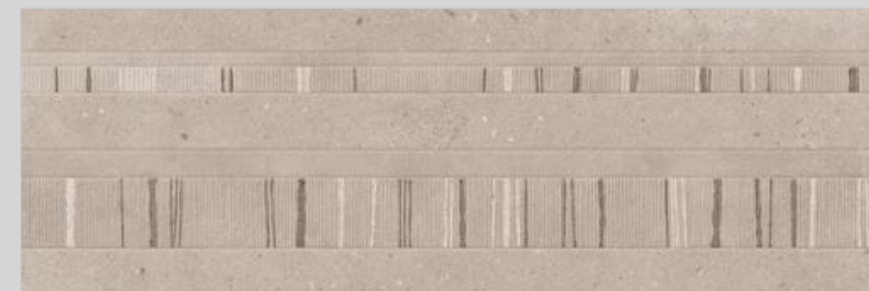
* Touch the QR to unlock 360° view.



MATT COLLECTION



ELITE GREY



GARNET ELITE GREY



ELITE IVORY

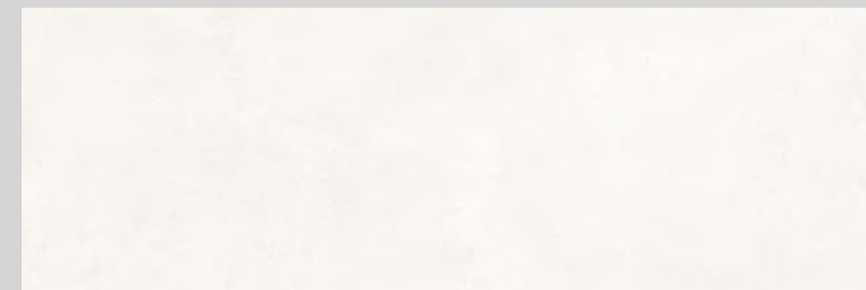


GARNET ELITE IVORY

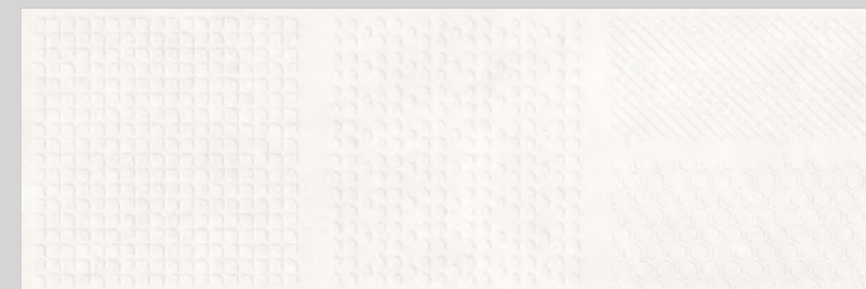
* Touch the **QR** to unlock 360° view.



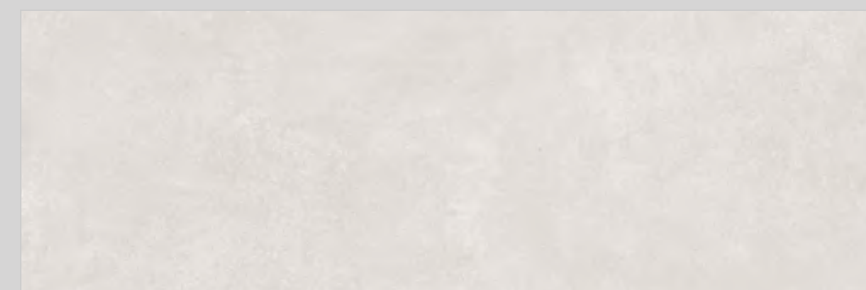
MATT COLLECTION



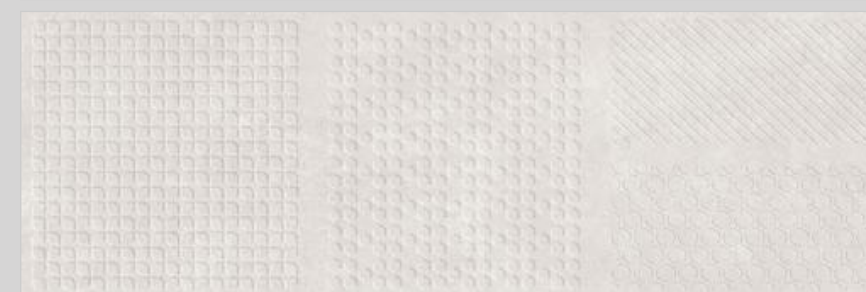
NEXUS BIANCO



CLOWN NEXUS BIANCO



NEXUS CEMENTO

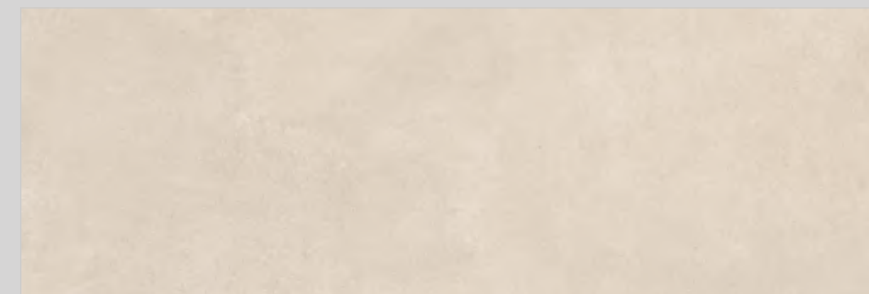


CLOWN NEXUS CEMENTO

* Touch the **QR** to unlock 360° view.



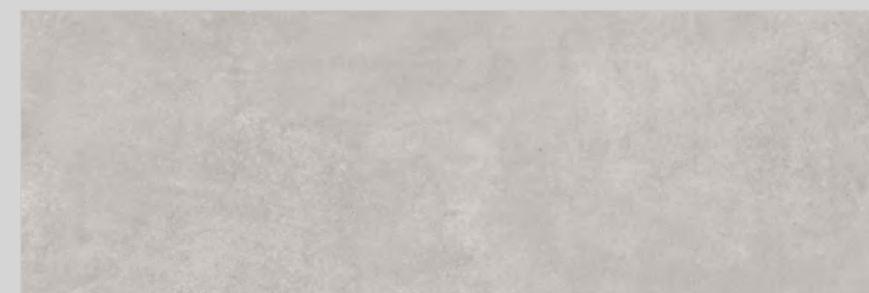
MATT COLLECTION



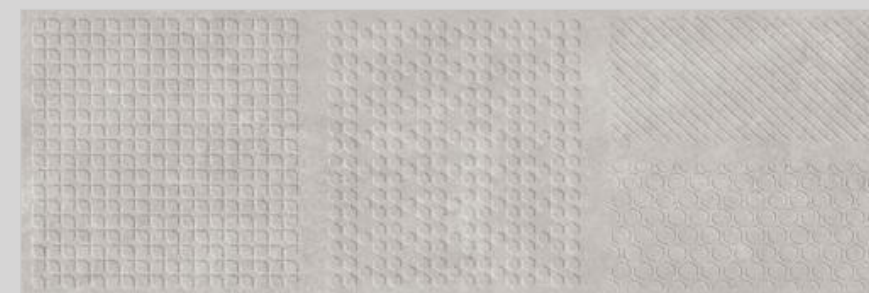
NEXUS NATURAL



CLOWN NEXUS NATURAL



NEXUS STEEL

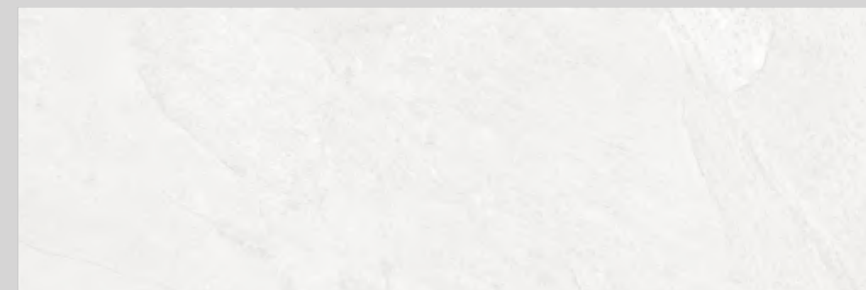


CLOWN NEXUS STEEL

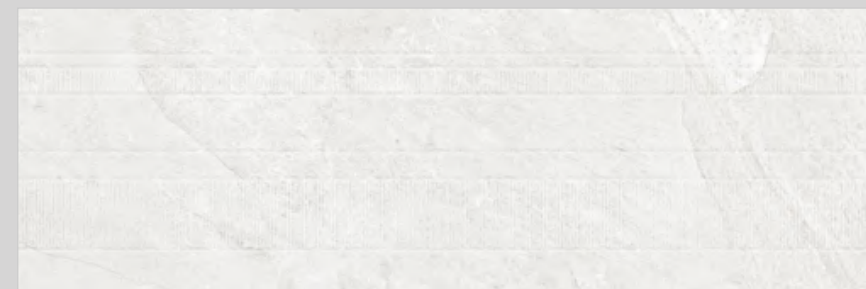
* Touch the QR to unlock 360° view.



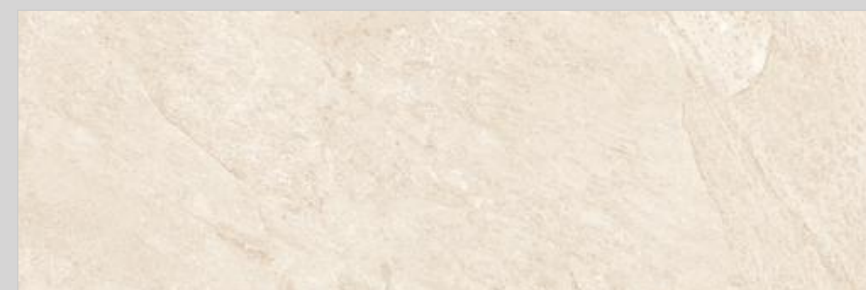
MATT COLLECTION



PIEDRA BIANCO



GARNET PIEDRA BIANCO



PIEDRA CREMA



GARNET PIEDRA CREMA

* Touch the **QR** to unlock 360° view.



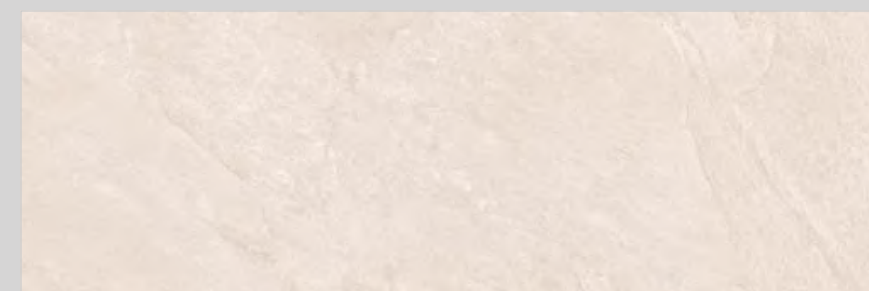
MATT COLLECTION



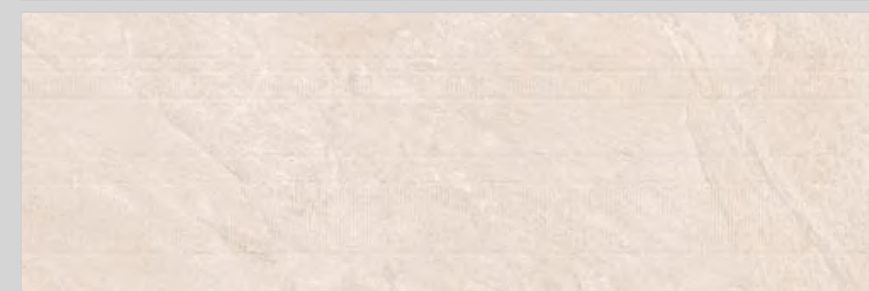
PIEDRA GREY



GARNET PIEDRA GREY



PIEDRA PEACH

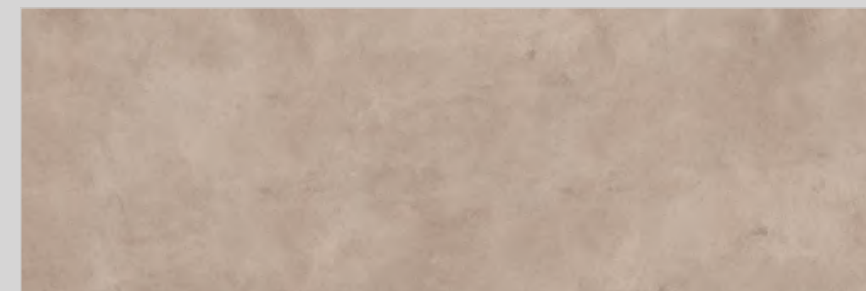


GARNET PIEDRA PEACH

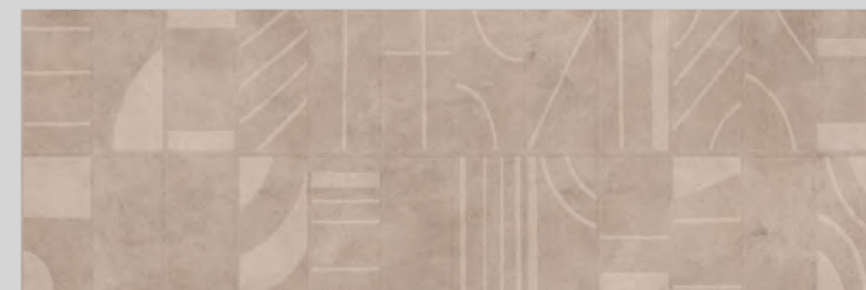
* Touch the **QR** to unlock 360° view.



MATT COLLECTION



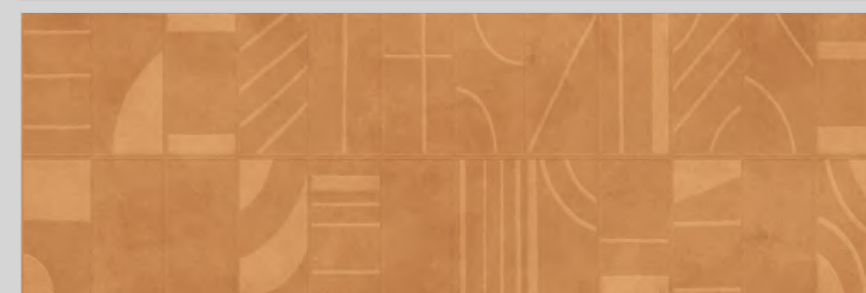
PLANOS ACOM



JASPER PLANOS ACOM



PLANOS COPPER

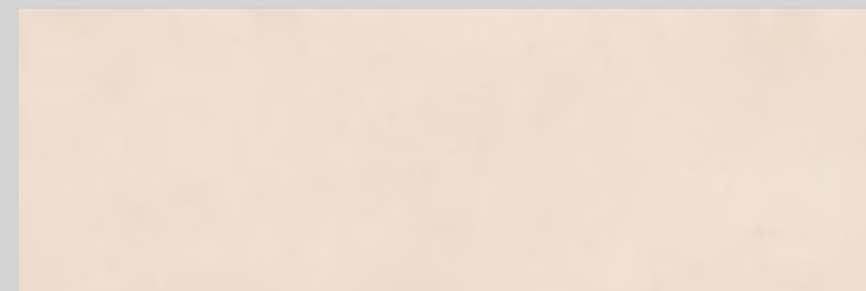


JASPER PLANOS COPPER

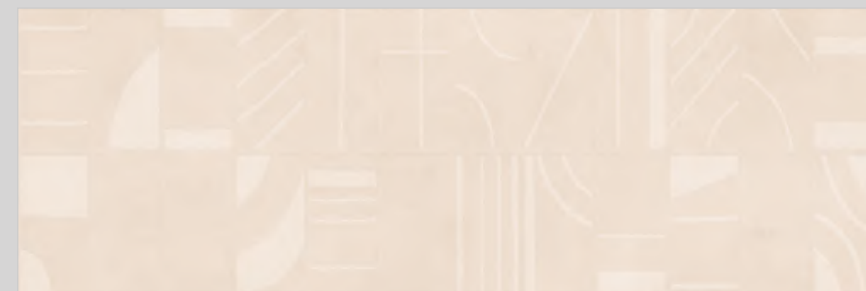
* Touch the **QR** to unlock 360° view.



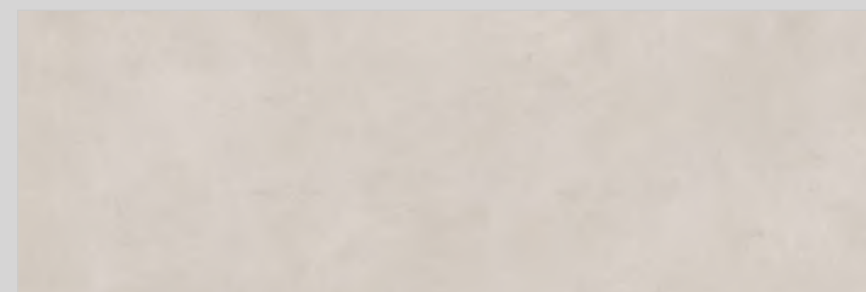
MATT COLLECTION



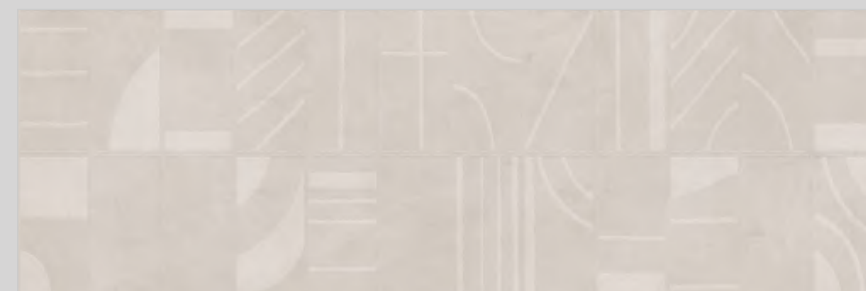
PLANOS PASTEL



JASPER PLANOS PASTEL



PLANOS STEEL

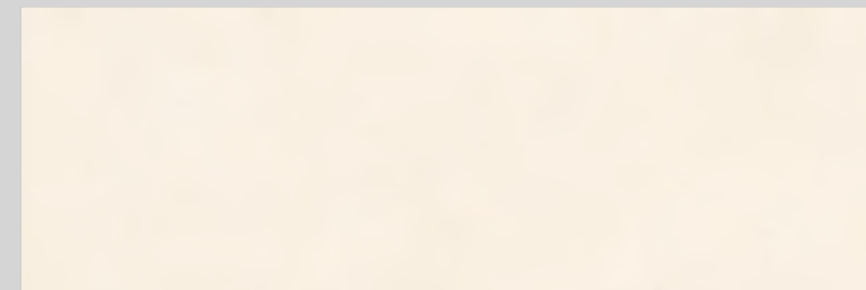


JASPER PLANOS STEEL

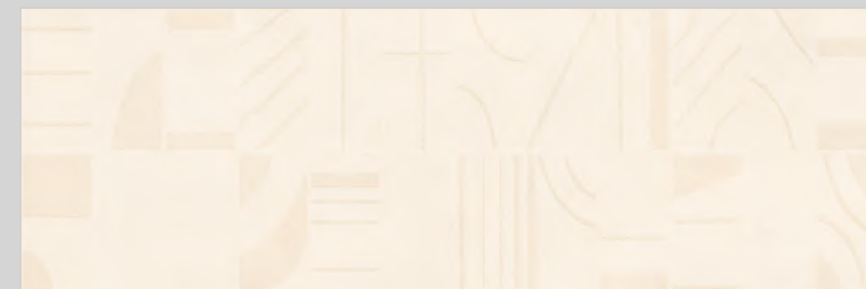
* Touch the **QR** to unlock 360° view.



MATT COLLECTION



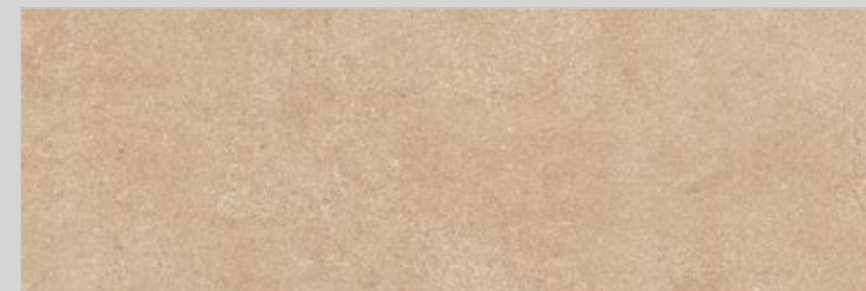
PLANOS TUSK



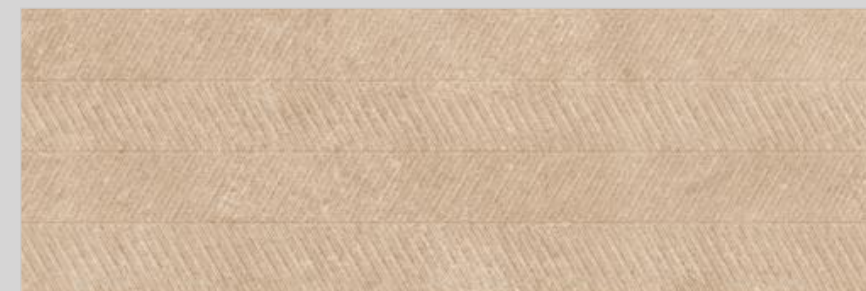
JASPER PLANOS TUSK



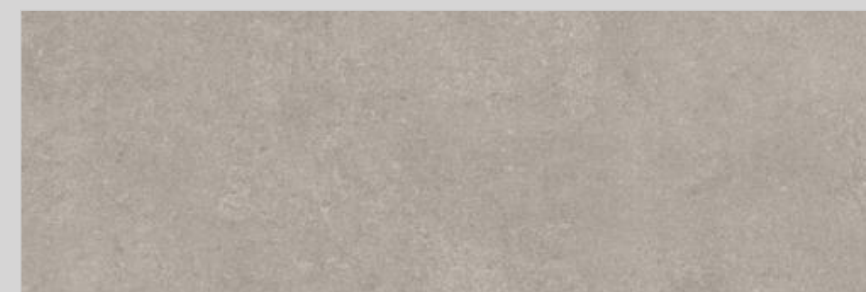
MATT COLLECTION



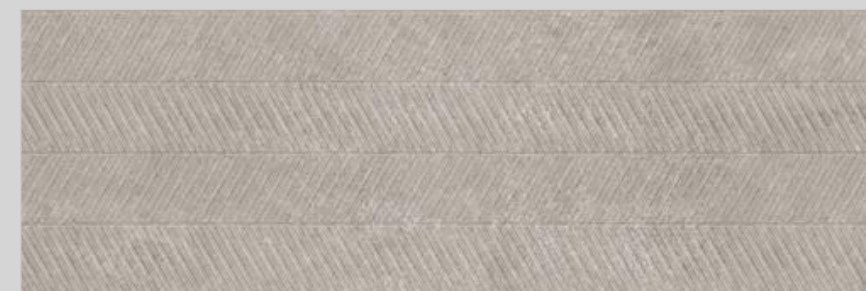
UNICO BEIGE



GROOVER UNICO BEIGE

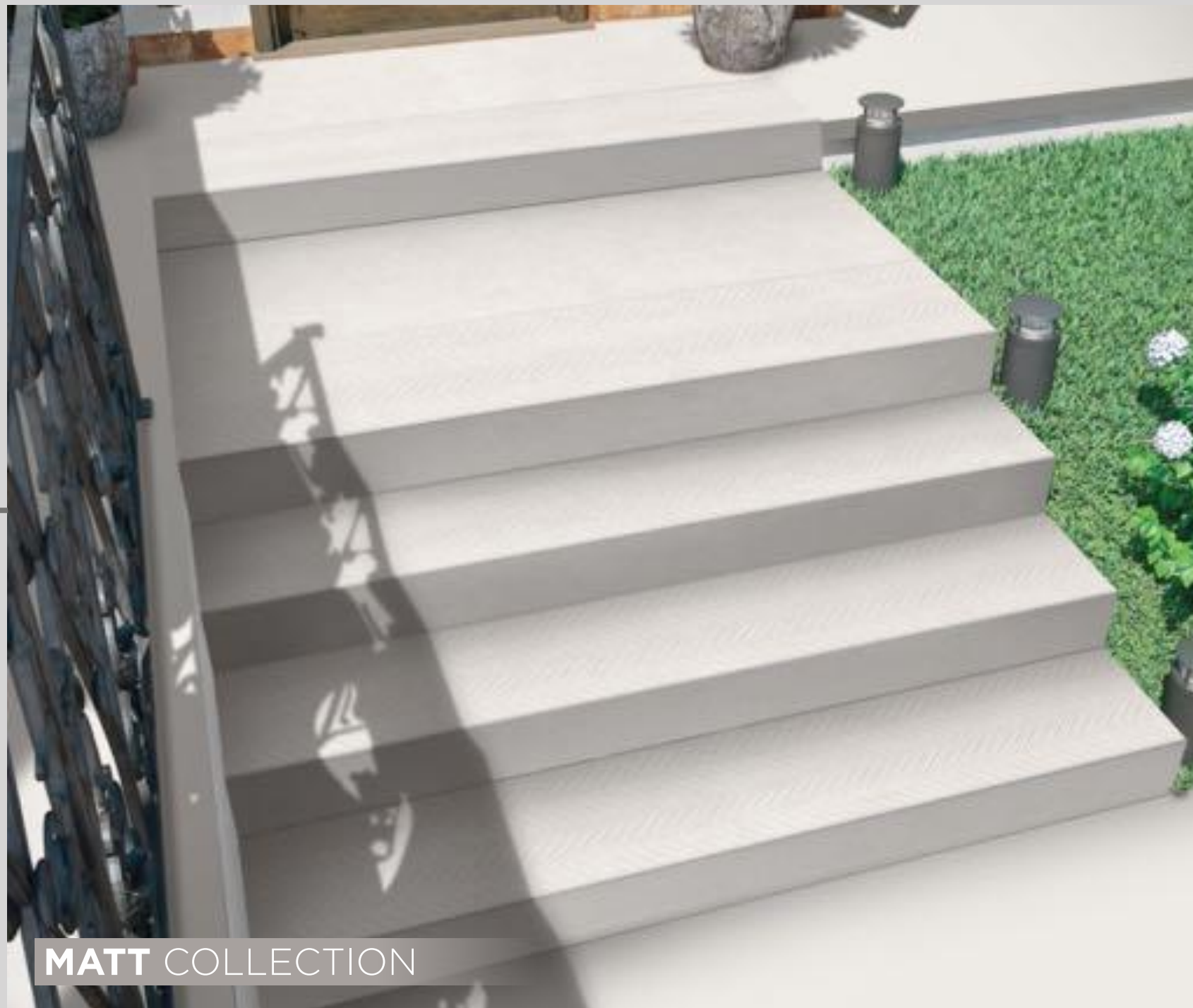


UNICO GREY

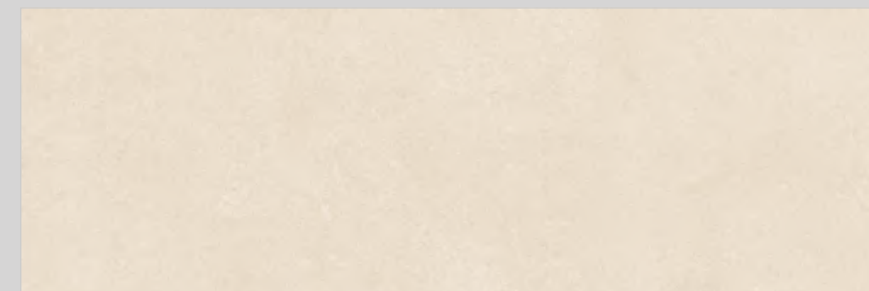


GROOVER UNICO GREY

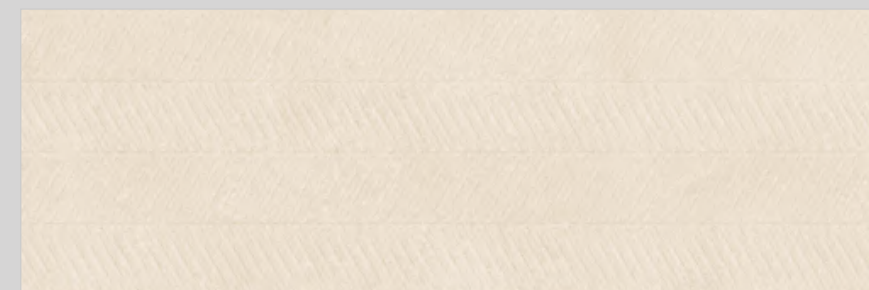
* Touch the QR to unlock 360° view.



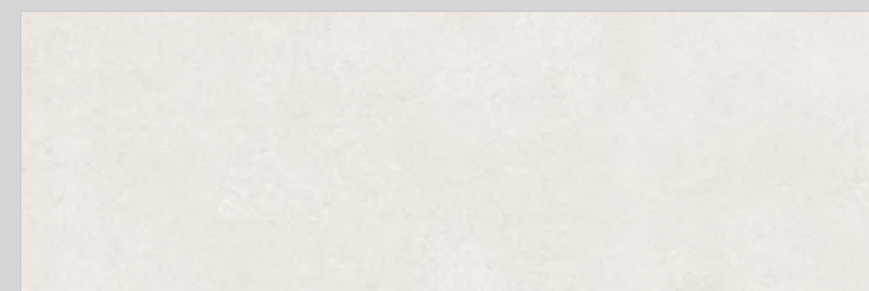
MATT COLLECTION



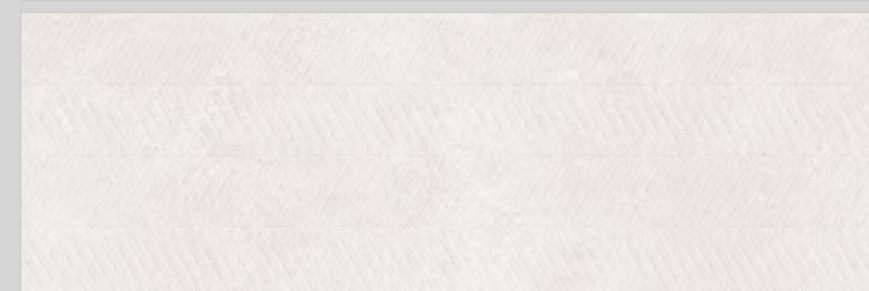
UNICO IVORY



GROOVER UNICO IVORY



UNICO PEARL

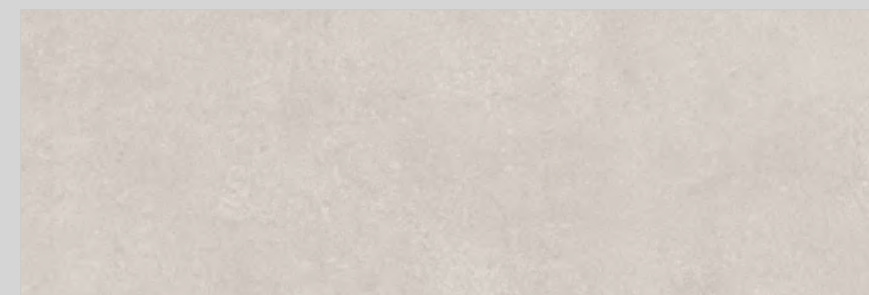


GROOVER UNICO PEARL

* Touch the **QR** to unlock 360° view.



MATT COLLECTION

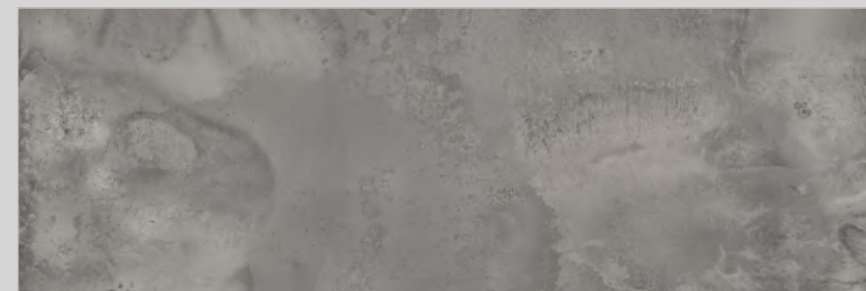


UNICO STEEL



GROOVER UNICO STEEL

* Touch the **QR** to unlock 360° view.



LETIGRES DOVE



CLOWN LETIGRES DOVE



MATT COLLECTION

* Touch the **QR** to unlock 360° view.



RUSTICO GREY



RUSTICO IVORY

MATT COLLECTION

* Touch the **QR** to unlock 360° view.



**TOUCH
OF
ELEGANCE**

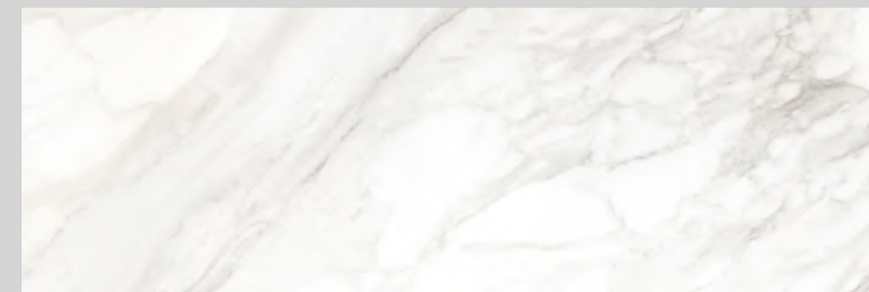
Satin

collection

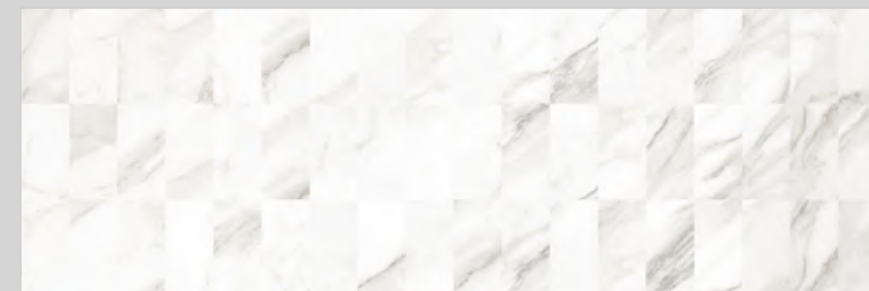
The Satin Collection by Varmora is a culmination of elegant concept and craftsmanship. The collection features tiles with a feathery touch and reflective sheen that upkeep the timeless appeal of your space.



SATIN COLLECTION



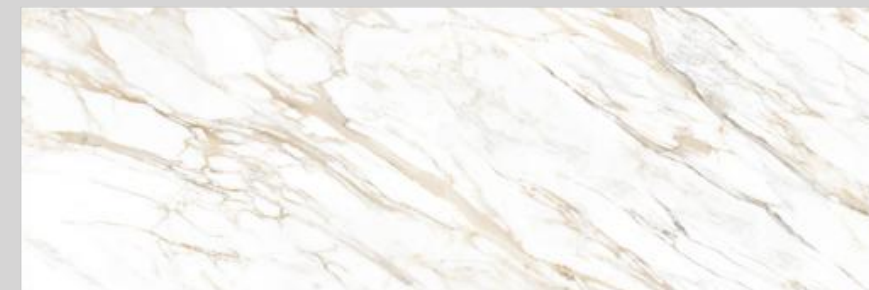
CALCUTTA LIVO



SWELL CALCUTTA LIVO



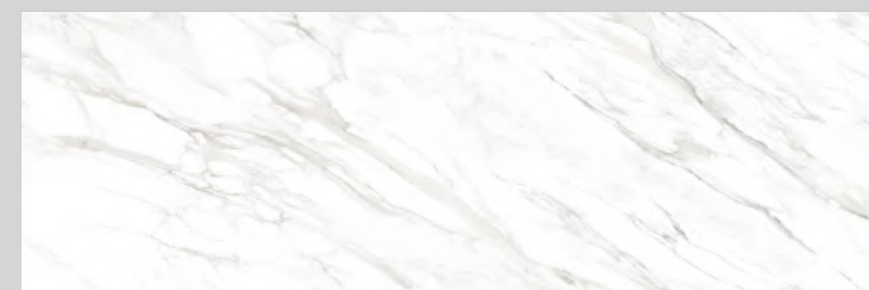
SATIN COLLECTION



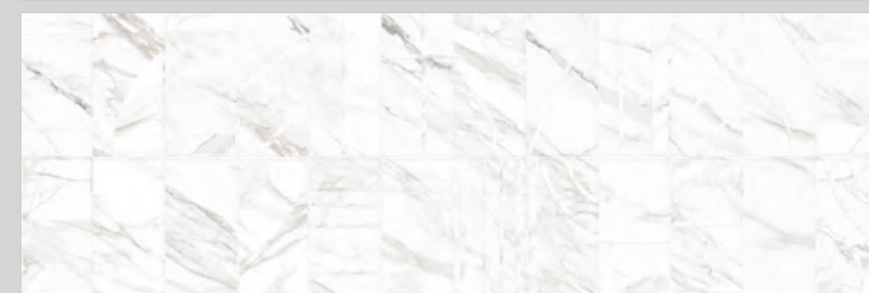
STATUARIO NATURAL



STRIPO STATUARIO NATURAL



STATUARIO ROMANO



JASPER STATUARIO ROMANO

* Touch the QR to unlock 360° view.

Technical Specification

GVT (Normal Vitrified Body & Color Vitrified Body)

SR. NO.	CHARACTERISTIC	TEST METHOD	IS 15622 :2017 (GROUP B I a)	VARMORA VALUE	
A					
DIMENSION & SURFACE QUALITY					
1	Deviation in Length & Width	IS - 13630 - 1	± 0.10%	± 0.10%	
2	Deviation in Thickness	IS - 13630 - 1	± 5.00%	± 3.50%	
3	Straightness of sides	IS - 13630 - 1	± 0.10%	± 0.10%	
4	Rectangularity	IS - 13630 - 1	± 0.10%	± 0.10%	
5	Surface Flatness	IS - 13630 - 1	± 0.50%	± 0.20%	
6	Surface Quality	IS - 13630 - 1	Minimum 95 % of tiles shall be free from visible defects	95%	
B					
PHYSICAL PROPERTIES					
1	Water Absorption	IS - 13630 - 2	≤0.08% ,Avg.	0.06% ,Avg.	
2	Modulus of Rapture(N/mm)	IS - 13630 - 6	Avg. 35 N/mm ²	Avg. 38 N/mm ²	
3	Breaking Strength (N)	IS - 13630 - 6	Thickness <7.5 mm = 700 N, Min Thickness ≥7.5 mm = 1300 N, Min	Thickness ≥7.5 mm = 1500 N	
4	Moisture Expansion (mm/m)	IS - 13630 - 3	0.02 Max.	0.01 Max.	
5	Scratch Hardness of Surface (Mohs' Scale)	IS - 13630 - 13	5, Min	5, Min*	
6	Resistance of Surface Abrasion (Glazed tiles)	IS - 13630 - 11	Class II, Min.	Class IV	
7	Co-efficient of linear thermal expansion	IS - 13630 - 4	6x10 ⁻⁶ , Max	6x10 ⁻⁶ , Max	
8	Thermal Shock Resistance	IS - 13630 - 5	10 Cycles, Min	10 Cycles, Pass	
9	Crazing Resistance	IS - 13630 - 9	4 Cycles at 7.5 Bar ,Min	4 Cycles, Pass	
10	Impact Resistance- Coefficient of Restitution	IS - 13630 - 14	0.55, Min	0.55, Min	
11	Coefficient of Friction	-	Manufacturer Norms	Manufacturer Norms	
12	Frost Resistance	IS - 13630 - 10	Manufacturer Norms	No Damage	
13	Bulk Density (g/cc)	IS - 13630 - 2	2.2, Min	2.3, Min	
C					
CHEMICAL PROPERTIES					
1	Resistance to Staining	IS - 13630 - 8	Class 1, Min	Class 1, Min	
2	Resistance to Household Chemicals	IS - 13630 - 8	Class AA,Min	Class AA	
3	Resistance to Acids & Alkalis	IS - 13630 - 8	Required If agreed according to chemical resistance class indicated by manufacturer	Resistance	
Product Category		Body	Size	Coverage (sq. M.)	No. of Tiles/Box
GVT		GVT	400X1200	1.44	3 PCS

VARMORA Values given above are own valued, Which we tries to maintain, how ever test results may differ up to the limit prescribed under IS 15622 :2017 (GROUP B I a)
* Minimum 5 On matt tiles.

Note: Colour shown are as accurate as the limitations of the printing process will allow. Prospective customers are advised to inspect a sample of the tile before ordering. Our effort has been made to ensure the accuracy of the information given. However, the company reserve the right to change the specifications without prior notice. Sometime variations in shade or size being inherent to ceramic industry may occur. Before fixing, we advise you to follow the fixing instructions on the cartons (box) of the tiles. No responsibility will be accepted by the company once the tiles have been fixed.



VARMORA
TILES • BATHWARE

HEAD OFFICE

8/A National Highway, At. Dhuva, Tal. Wankaner,
Morbi-363621, Gujarat, India

Tiles Contact:

Mob.: +91 98252 23068

E-mail: marketing@varmora.com

Bathware Contact:

Mob.: +91 90999 13129

E-mail: marketing@varmorasanitaryware.com

Mob.: +91 99139 23095

E-mail: customercare.faucets@varmora.com

Mob.: +91 90990 01734

E-mail: customercare.bathware@varmora.com

Mob.: +91 90990 01734

E-mail: customercare.sink@varmora.com

CORPORATE OFFICE

Varmora Granito Pvt. Ltd.
1004/5/6 South Tower, ONE42
Off Bopal-Ambli Road
Ahmedabad-380054, Gujarat,INDIA

REGIONAL OFFICE

A-54, 1st Floor, Elite Auto House
Mathuradas Vasani Road, Andheri - Kurla Road
Andheri (East) Mumbai 400 093
Tel.: +91-22-4973 9179, Fax: +91-22-2838 9794
E-mail: mumbai@varmora.com

Tiles Customer Care:

1800 212 0053

Bathware Customer Care

1800 212 4525

Follow us:

