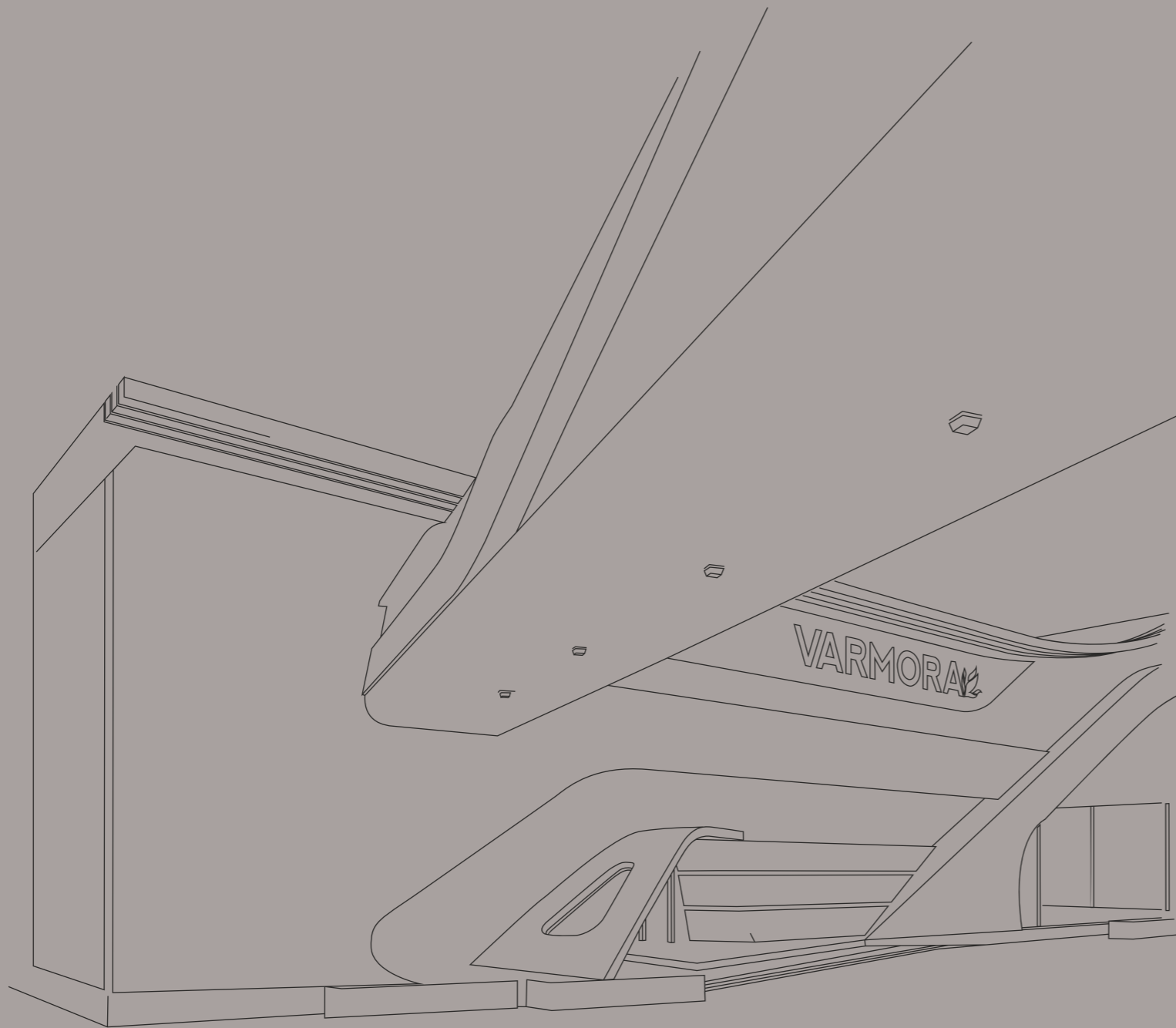




**60x**  
**120cm**  
FULL BODY



## ABOUT US

Varmora Granito Pvt. Ltd. is a flagship company of the Varmora Group and a leading manufacturer of high-quality ceramic tiles, bath and sanitary products, and other building materials. Established in 1994, Varmora Granito has grown to become one of the largest manufacturers in the industry, with in-house production capacity of 35 msm per annum. With a focus on innovation, sustainability, and customer satisfaction, Varmora Granito is committed to providing its customers with the best products and services worldwide. Varmora now boasts 317 exclusive brand outlets (EBOs) and 2,000+ multi-brand outlets (MBOs) in their network. Whether you're looking for stylish tiles, durable bath and sanitary products, or other building materials, Varmora Granito has you covered.

To know more about Varmora Granito visit [www.varmora.com](http://www.varmora.com)

The Ultimate  
Blend of  
**Durability**  
and  
**Elegance!**



9mm

THICKNESS



WALL &  
FLOOR



RANDOM

## INDEX



FULL BODY  
COLLECTION

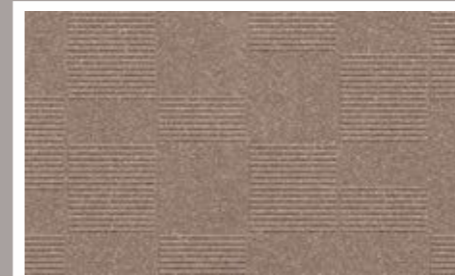


STEP & RISER  
COLLECTION

# FULL BODY MATRIX

DESIGN NAME	FINISH		PUNCH				
	MATT	GLOSS	GRAVITA	HAMMERSTONE	FIESTA	STROKE	GEOTECH
PRISTONE	<input type="radio"/>					<input type="radio"/>	<input type="radio"/>
LEPOLA BLACK	<input type="radio"/>	<input type="radio"/>	<input type="radio"/>	<input type="radio"/>	<input type="radio"/>		
LEPOLA WHITE	<input type="radio"/>	<input type="radio"/>	<input type="radio"/>	<input type="radio"/>	<input type="radio"/>		
MARMO NERO	<input type="radio"/>					<input type="radio"/>	<input type="radio"/>
MARMO SILVER	<input type="radio"/>					<input type="radio"/>	<input type="radio"/>
MARMO BROWN	<input type="radio"/>					<input type="radio"/>	<input type="radio"/>
GRIPSOM BEIGE	<input type="radio"/>					<input type="radio"/>	<input type="radio"/>
GRIPSOM DOVE	<input type="radio"/>					<input type="radio"/>	<input type="radio"/>
GRIPSOM VERDE	<input type="radio"/>	<input type="radio"/>	<input type="radio"/>	<input type="radio"/>	<input type="radio"/>		
GRIPSOM GREY LT	<input type="radio"/>	<input type="radio"/>	<input type="radio"/>	<input type="radio"/>	<input type="radio"/>		
GRIPSOM GREY DK	<input type="radio"/>		<input type="radio"/>	<input type="radio"/>	<input type="radio"/>		

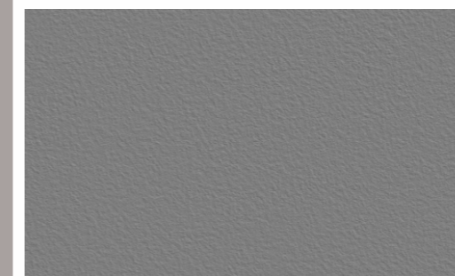
AVAILABLE PUNCH



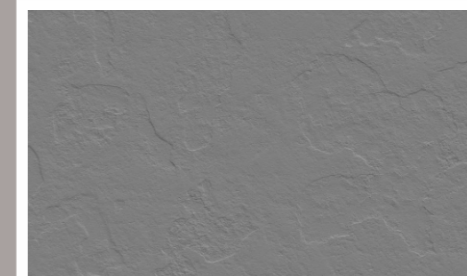
GEOTECH



STROKE



GRAVITA



HAMMERSTONE



FIESTA



60x  
120cm

9mm THICKNESS

# FULL BODY COLLECTION

Surfaces infused with the essence of nature exude an exquisite and authentic appeal while ensuring long-lasting durability. These fullbody surfaces are the epitome of choice for spaces that endure high footfall, thanks to their inherent strength and enduring beauty.

## FEATURES



Low Water  
Absorption



Easy to Clean



Zero  
Maintenance



Eco Friendly



Anti Skid



Highly  
Durable



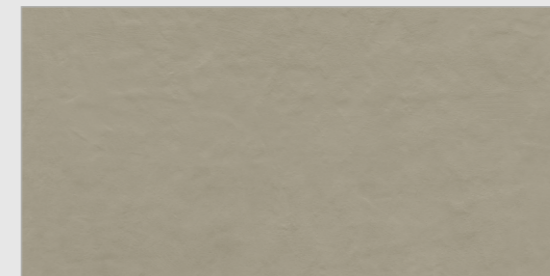
Abrasion  
Resistance



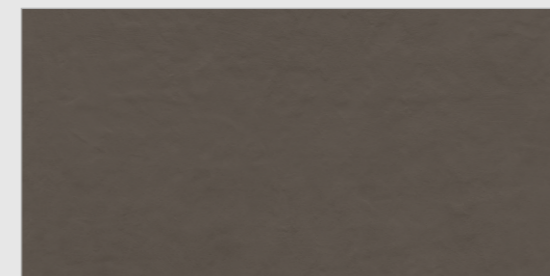
Suitable for  
Outdoor & Indoor



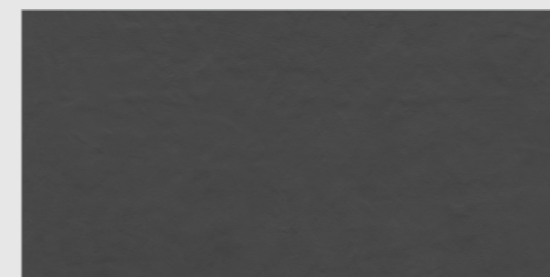
Finish : Matt



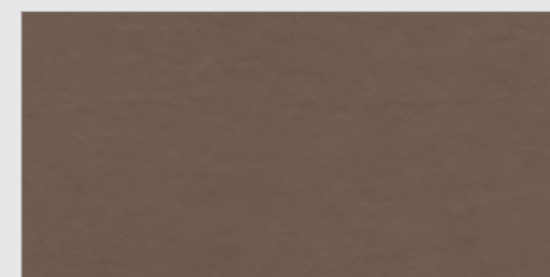
PRISMA PEARL



PRISMA CEDAR



PRISMA ASH



PRISMA RUBY

\* Touch the **QR** to unlock 360° view.



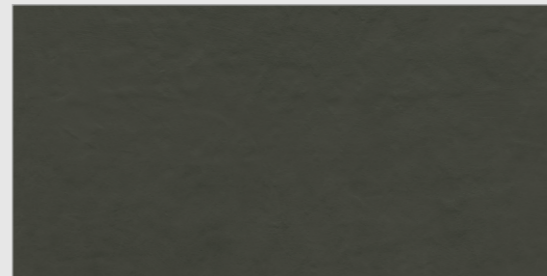
**FULL BODY** COLLECTION



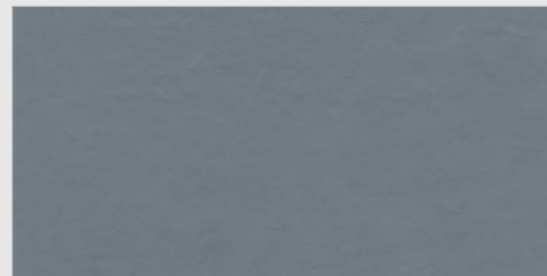
**FULL BODY** COLLECTION



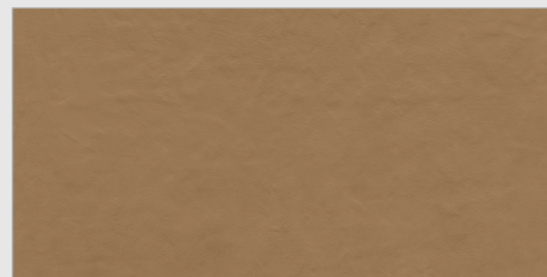
Finish : Matt



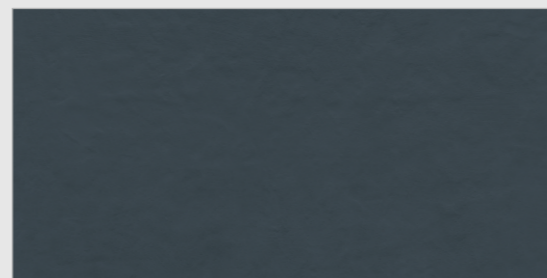
PRISMA FOREST



PRISMA SKY



PRISMA CANARY



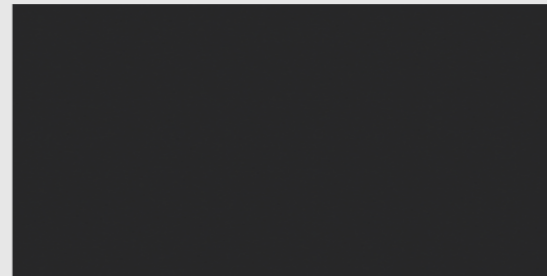
PRISMA OCEAN



FULL BODY COLLECTION

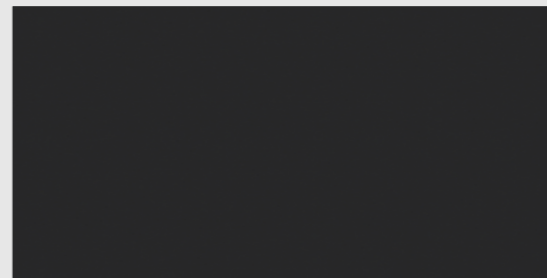


Finish : Glossy



LEPOLA BLACK GL

Finish : Matt



LEPOLA BLACK MT

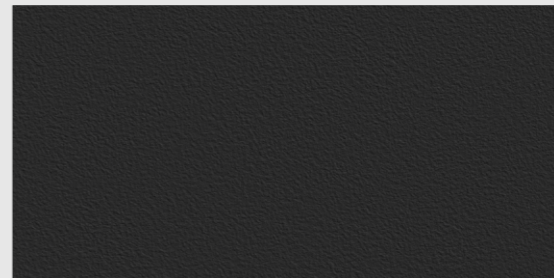




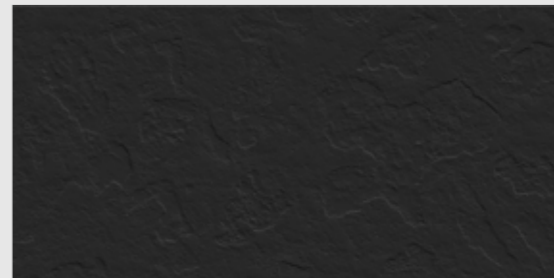
**FULL BODY** COLLECTION



Finish : Matt



GRAVITA LEPOLA BLACK



HAMMERSTONE LEPOLA BLACK



FIESTA LEPOLA BLACK

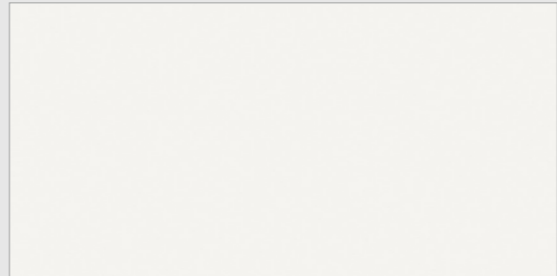
\* Touch the QR to unlock 360° view.



**FULL BODY** COLLECTION

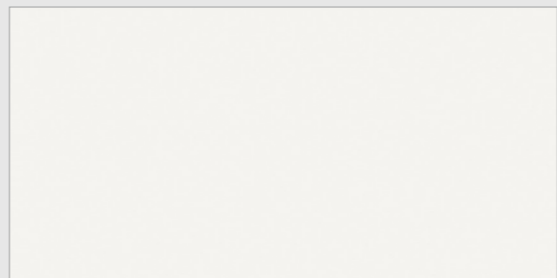


Finish : Glossy



LEPOLA WHITE GL

Finish : Matt



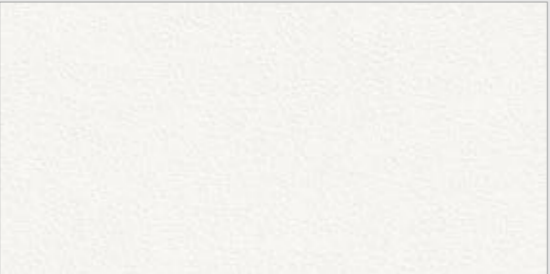
LEPOLA WHITE MT



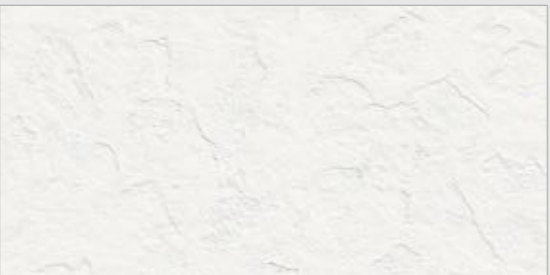
FULL BODY COLLECTION



Finish : Matt



GRAVITA LEPOLA WHITE



HAMMERSTONE LEPOLA WHITE



FIESTA LEPOLA WHITE

\* Touch the QR to unlock 360° view.



FULL BODY COLLECTION



Finish : Glossy



GRIPSOM GREY LT GL

Finish : Matt



GRIPSOM GREY LT MT

\* Touch the QR to unlock 360° view.



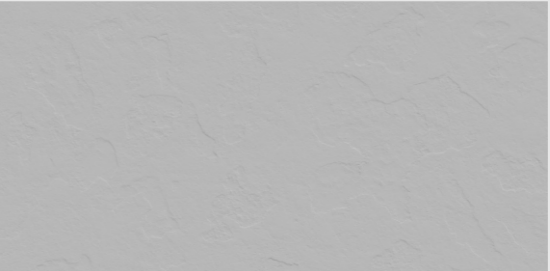
FULL BODY COLLECTION



Finish : Matt



GRAVITA GRIPSOM GREY LT



HAMMERSTONE GRIPSOM GREY LT



FIESTA GRIPSOM GREY LT

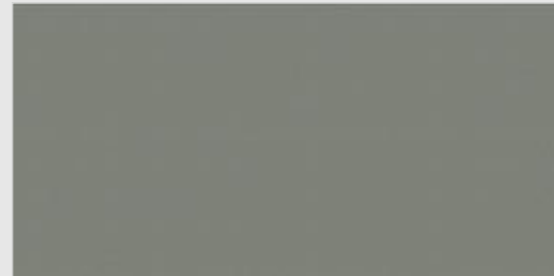
\* Touch the QR to unlock 360° view.



**FULL BODY** COLLECTION



Finish : Glossy



GRIPSOM VERDE GL

Finish : Matt



GRIPSOM VERDE MT



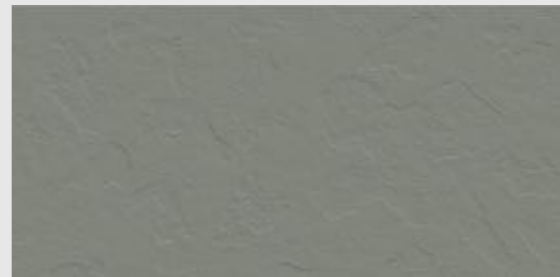
FULL BODY COLLECTION



Finish : Matt



GRAVITA GRIPSOM VERDE



HAMMERSTONE GRIPSOM VERDE



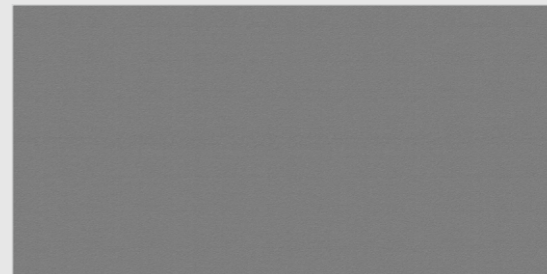
FIESTA GRIPSOM VERDE



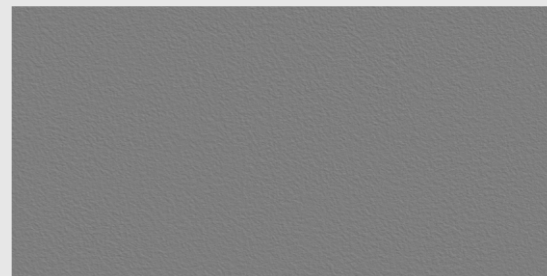
**FULL BODY** COLLECTION



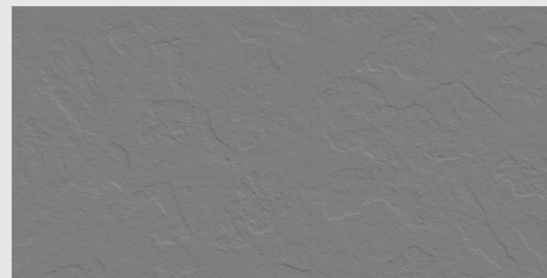
Finish : Matt



GRIPSOM GREY DK



GRAVITA GRIPSOM GREY DK



HAMMERSTONE GRIPSOM GREY DK



FIESTA GRIPSOM GREY DK





FULL BODY COLLECTION



Finish : Matt



GRIPSOM DOVE



STROKE GRIPSOM DOVE



GEOTECH GRIPSOM DOVE

\* Touch the QR to unlock 360° view.



FULL BODY COLLECTION



Finish : Matt



GRIPSOM BEIGE



STROKE GRIPSOM BEIGE



GEOTECH GRIPSOM BEIGE



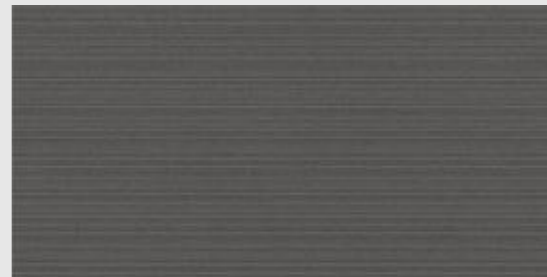
FULL BODY COLLECTION



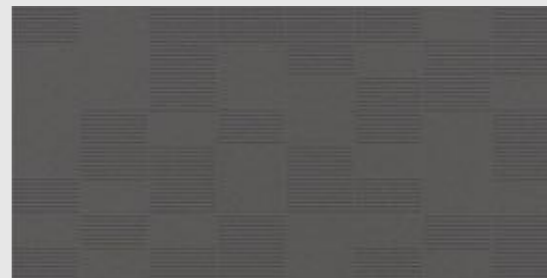
Finish : Matt



MARMO NERO



STROKE MARMO NERO



GEOTECH MARMO NERO



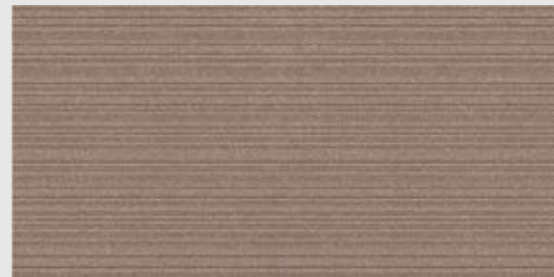
FULL BODY COLLECTION



Finish : Matt



MARMO BROWN



STROKE MARMO BROWN



GEOTECH MARMO BROWN



FULL BODY COLLECTION



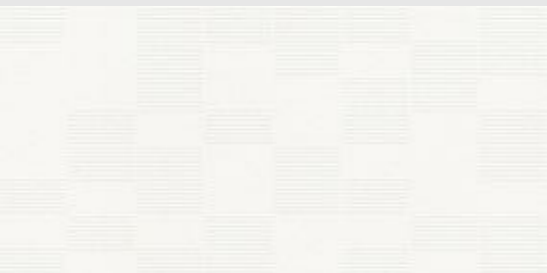
Finish : Matt



MARMO SILVER



STROKE MARMO SILVER



GEOTECH MARMO SILVER

\* Touch the QR to unlock 360° view.



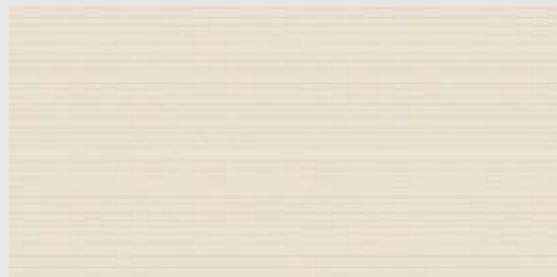
**FULL BODY** COLLECTION



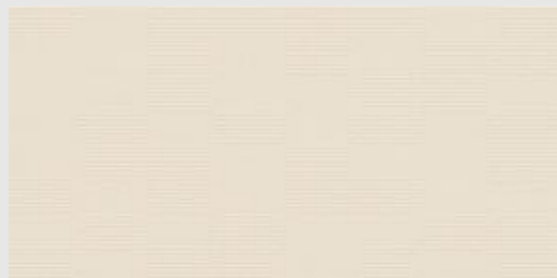
Finish : Matt



PRISTONE



STROKE PRISTONE

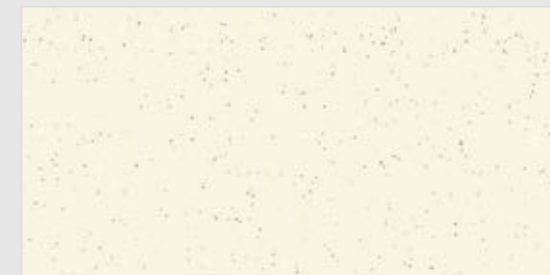


GEOTECH PRISTONE

\* Touch the QR to unlock 360° view.



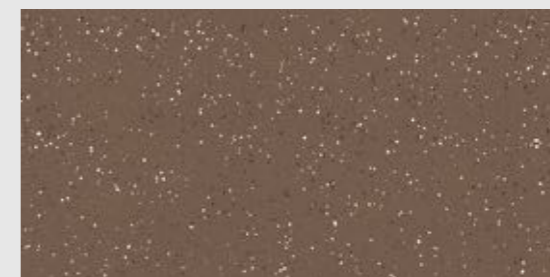
Finish : Glossy



GLOSSLAB IVORY



GLOSSLAB GREY



GLOSSLAB BROWN



GLOSSLAB NERO

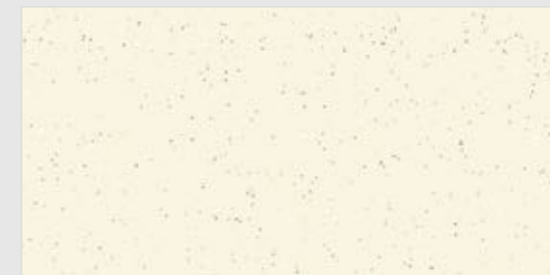


**FULL BODY** COLLECTION

\* Touch the **QR** to unlock 360° view.



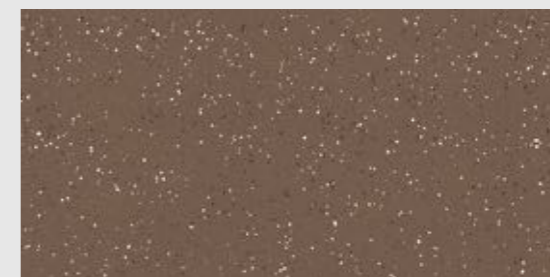
Finish : Matt



MATTLAB IVORY



MATTLAB GREY



MATTLAB BROWN



MATTLAB NERO



**FULL BODY** COLLECTION

\* Touch the **QR** to unlock 360° view.





30x  
120cm

12mm THICKNESS

# STEP & RISER COLLECTION

Elevate your space with stylish and durable tiles designed to adorn both steps and risers. From modern designs to timeless classics, our tiles add safety, durability and sophistication to your staircases.

## FEATURES



Self-embossed  
tread lines



Anti-skid  
surface



Water Absorption  
< 0.05%



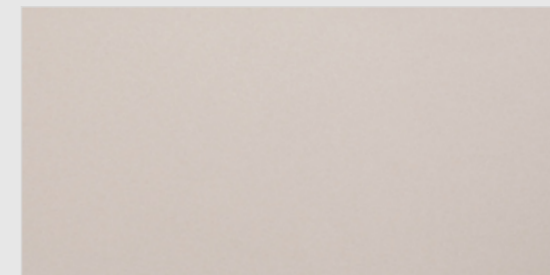
Full Body  
Vitrified Steps



Easy Laying



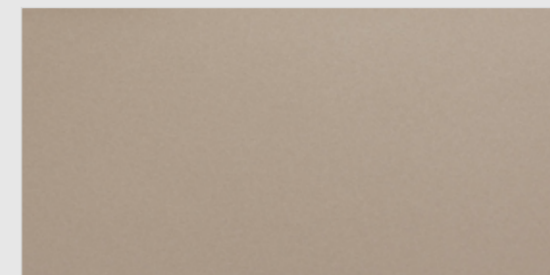
Finish : Matt



SCOTT CREMA



STAIRWAY CREMA



SCOTT BEIGE



STAIRWAY BEIGE

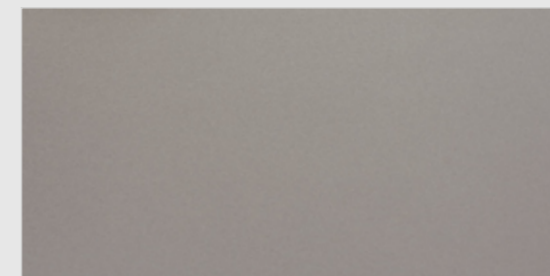


**STEP & RISER** COLLECTION

\* Touch the **QR** to unlock 360° view.



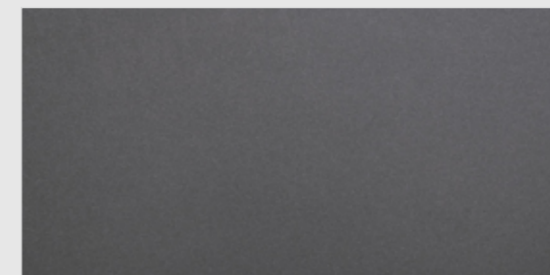
Finish : Matt



SCOTT GREY



STAIRWAY GREY



SCOTT NERO



STAIRWAY NERO

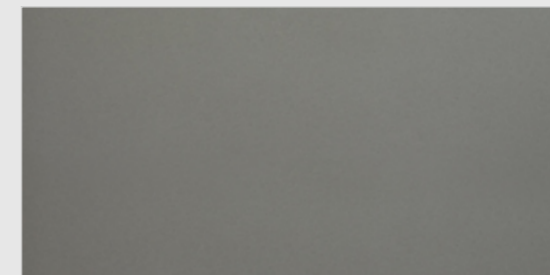


**STEP & RISER** COLLECTION

\* Touch the **QR** to unlock 360° view.



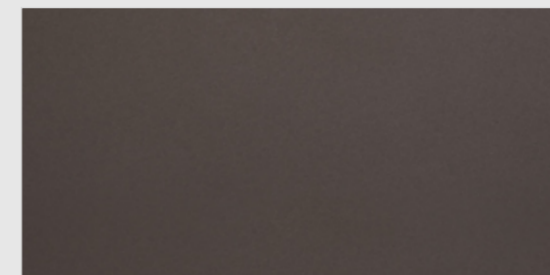
Finish : Matt



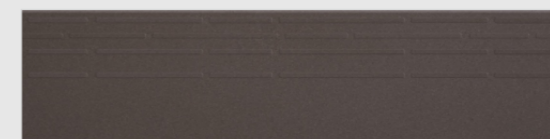
SCOTT VERDE



STAIRWAY VERDE



SCOTT NATURAL



STAIRWAY NATURAL



**STEP & RISER** COLLECTION

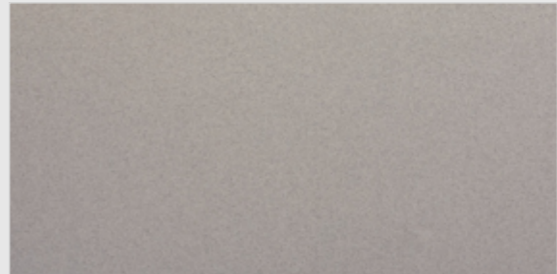
\* Touch the **QR** to unlock 360° view.



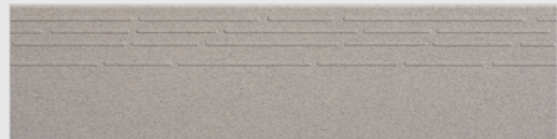
**STEP & RISER** COLLECTION



Finish : Matt



SCOTT PEARL



STAIRWAY PEARL

# Technical Specification

## FULLBODY

SR. NO.	CHARACTERISTIC	TEST METHOD	IS 15622 :2017 (GROUP B I a)	VARMORA VALUE	
<b>A</b>					
<b>DIMENSION &amp; SURFACE QUALITY</b>					
1	Deviation in Length & Width	IS - 13630 - 1	± 0.10%	± 0.10%	
2	Deviation in Thickness	IS - 13630 - 1	± 5.00%	± 3.50%	
3	Straightness of sides	IS - 13630 - 1	± 0.10%	± 0.10%	
4	Rectangularity	IS - 13630 - 1	± 0.10%	± 0.10%	
5	Surface Flatness	IS - 13630 - 1	± 0.50%	± 0.20%	
6	Surface Quality	IS - 13630 - 1	Minimum 95 % of tiles shall be free from visible defects	95%	
<b>B</b>					
<b>PHYSICAL PROPERTIES</b>					
1	Water Absorption	IS - 13630 - 2	≤0.08%,Avg.	0.06%,Avg.	
2	Modulus of Rapture(N/mm <sup>2</sup> )	IS - 13630 - 6	Avg. 35 N/mm <sup>2</sup>	Avg. 40 N/mm <sup>2</sup>	
3	Breaking Strength (N)	IS - 13630 - 6	Thickness ≥7.5 mm = 1300 N, Min	Thickness ≥7.5 mm = 1700 N	
4	Moisture Expansion (mm/m)	IS - 13630 - 3	0.02 Max.	0.01 Max.	
5	Scratch Hardness of Surface (Mohs' Scale)	IS - 13630 - 13	5, Min	5, Min*	
6	Resistance of Surface Abrasion (Glazed tiles)	IS - 13630 - 11	Class II, Min.	Class IV	
7	Co-efficient of linear thermal expansion	IS - 13630 - 4	6x10 <sup>-6</sup> , Max	6x10 <sup>-6</sup> , Max	
8	Thermal Shock Resistance	IS - 13630 - 5	10 Cycles, Min	10 Cycles, Pass	
9	Crazing Resistance	IS - 13630 - 9	4 Cycles at 7.5 Bar, Min	4 Cycles, Pass	
10	Impact Resistance-Coefficient of Restitution	IS - 13630 - 14	0.55, Min	0.55, Min	
11	Coefficient of Friction	-	Manufacturer Norms	Manufacturer Norms	
12	Frost Resistance	IS - 13630 - 10	Manufacturer Norms	No Damage	
13	Resistance to Deep Abrasion for Unglazed Tiles (mm)	IS - 13630 - 12	140,Max	140,Max	
14	Bulk Density (g/cc)	IS - 13630 - 2	2.2, Min	2.3, Min	
<b>C</b>					
<b>CHEMICAL PROPERTIES</b>					
1	Resistance to Staining	IS - 13630 - 8	Glaze - Class 1,Min Unglaze - Class 2,Min	Glaze & Unglaze - Class 2,Min	
2	Resistance to Household Chemicals	IS - 13630 - 8	Glaze - Class AA,Min Unglaze -Required If agreed according to chemical resistance class indicated by manufacturer	Class AA	
3	Resistance to Acids & Alkalis	IS - 13630 - 8	Glaze & Unglaze -Required If agreed according to chemical resistance class indicated by manufacturer	Resistance	
<b>Product Category</b>		<b>Body</b>	<b>Size</b>	<b>Coverage(sp. M.)</b>	<b>No. of Tiles/Box</b>
FULLBODY		FULLBODY	600X1200	1.44	2PCS
STEP & RISER		FULLBODY	600X1200	1.44	2PCS
STEP & RISER		FULLBODY	300X1200	1.44	4PCS

VARMORA Values given above are own valued, Which we tries to maintain, how ever test results may differ up to the limit prescribed under IS 15622 :2017 (GROUP B I a)  
\* Minimum 5 On matt tiles.

Note: Colour shown are as accurate as the limitations of the printing process will allow. Prospective customers are advised to inspect a sample of the tile before ordering. Our effort has been made to ensure the accuracy of the information given. However, the company reserve the right to change the specifications without prior notice. Sometime variations in shade or size being inherent to ceramic industry may occur. Before fixing, we advise you to follow the fixing instructions on the cartons (box) of the tiles. No responsibility will be accepted by the company once the tiles have been fixed.



## VARMORA

TILES • BATHWARE

### HEAD OFFICE

8/A National Highway, At. Dhuva, Tal. Wankaner, Morbi-363621, Gujarat, India

### Tiles Contact:

Mob.: +91 98252 23068

E-mail: marketing@varmora.com

### Bathware Contact:

Mob.: +91 90999 13129

E-mail: marketing@varmorasanitaryware.com

### Mob.: +91 99139 23095

E-mail: customercare.faucets@varmora.com

### Mob.: +91 90990 01734

E-mail: customercare.bathware@varmora.com

### Mob.: +91 90990 01734

E-mail: customercare.sink@varmora.com

### CORPORATE OFFICE

Varmora Granito Pvt. Ltd.  
1004/5/6 South Tower, ONE42  
Off Bopal-Ambli Road  
Ahmedabad-380054, Gujarat,INDIA

### REGIONAL OFFICE

A-54, 1st Floor, Elite Auto House  
Mathuradas Vasanji Road, Andheri - Kurla Road  
Andheri (East) Mumbai 400 093  
Tel.: +91-22-4973 9179, Fax: +91-22-2838 9794  
E-mail: mumbai@varmora.com

Tiles Customer Care:

**1800 212 0053**

Bathware Customer Care:

**1800 212 4525**

Follow us:

